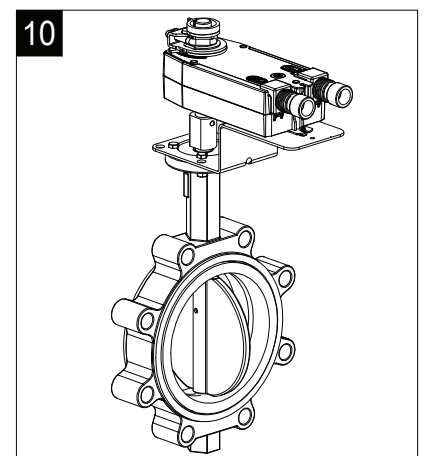
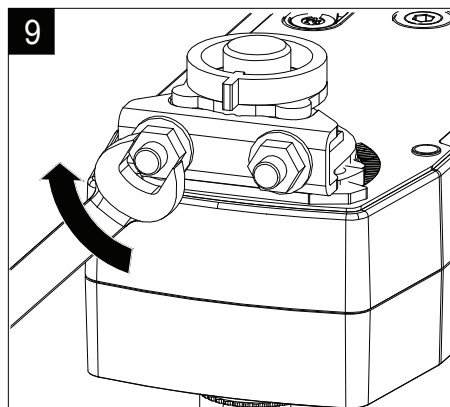
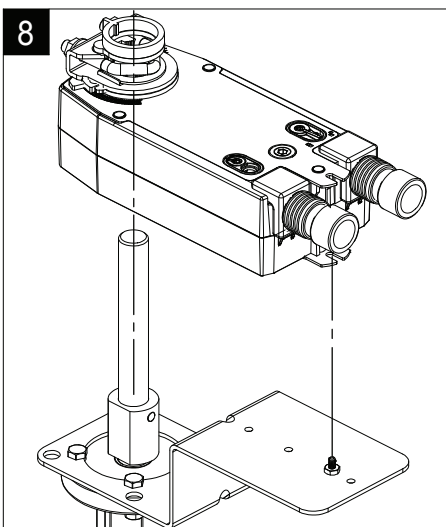
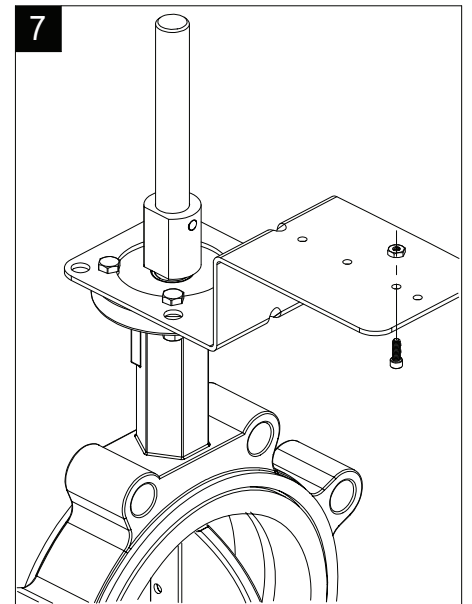
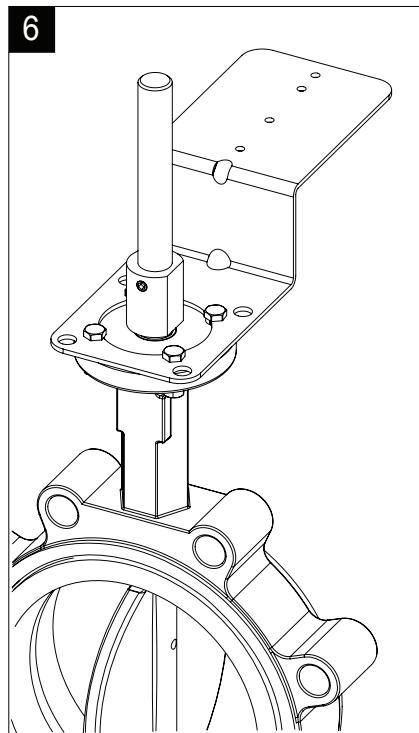
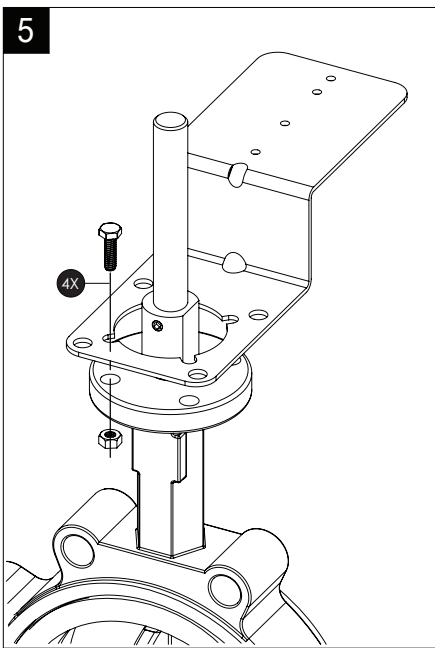
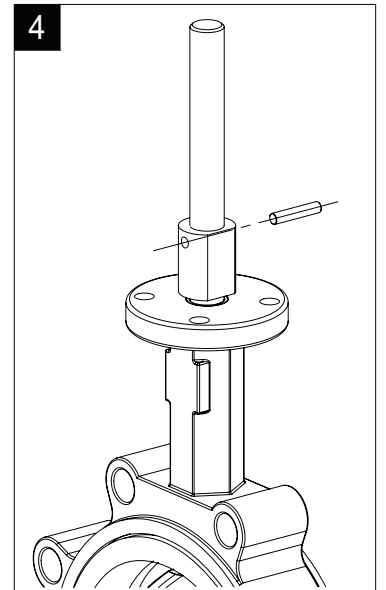
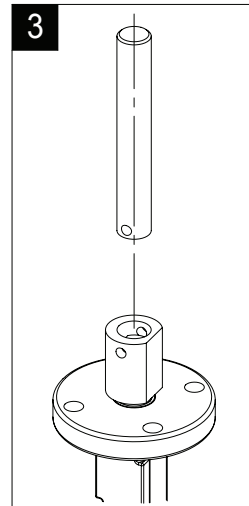
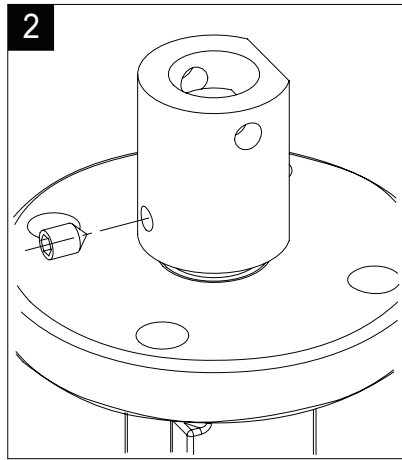
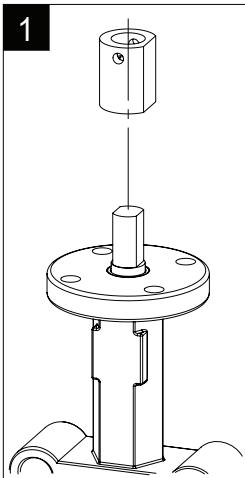
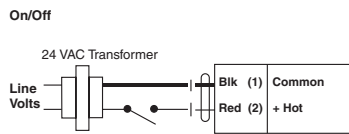


71469-00001

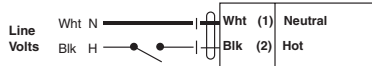
AF-X1 Actuators with F6 Butterfly Valves



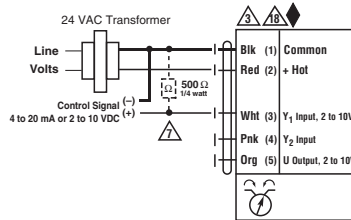
Spring Return Actuator with On/Off and -SR



On/Off

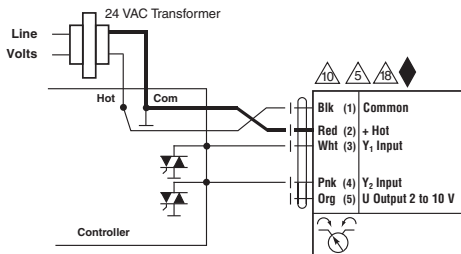


24 VAC up to 240 VAC

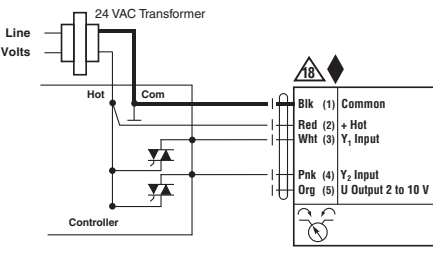


VDC / 4 to 20 mA

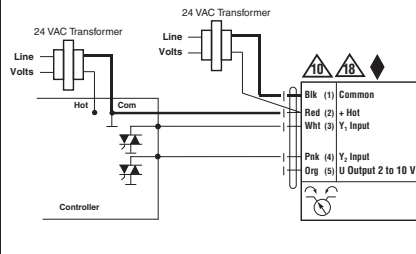
Spring Return Actuator with MFT



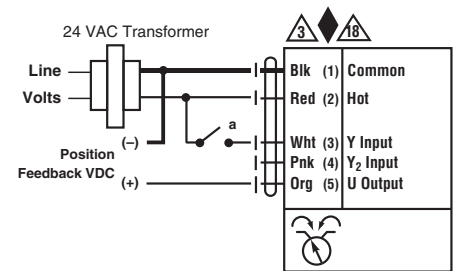
Triac Sink



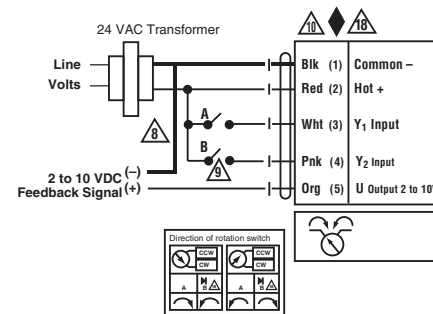
Triac Source



Triac Sink with Separate Transformer



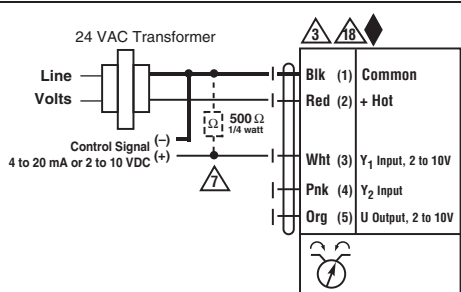
On/Off



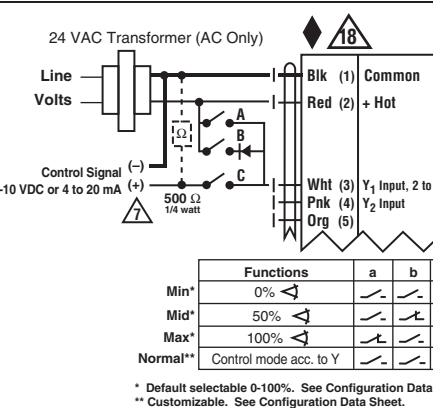
Floating Point

Notes:

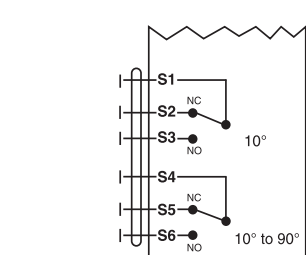
- ◆ Meets cULus requirements without the need of an electrical ground connection
- Ⓐ Actuators with appliance cables are numbered.
- Ⓐ Actuators may be connected in parallel. Power consumption and input impedance must be observed.
- Ⓐ Actuators may also be powered by 24 VDC.
- Ⓐ Only connect common to neg. (-) leg of control circuits.
- Ⓐ A 500 Ω resistor converts the 4 to 20 mA control signal to 2 to 10 VDC.
- Ⓐ Control signal may be pulsed from either the Hot (Source) or Common (Sink) 24 VAC line.
- Ⓐ Contact closures A & B also can be triacs. A & B should both be closed for the triac source and open for triac sink.
- Ⓐ For triac sink the Common connection from the actuator must be connected to the Hot connection of the controller. Position feedback cannot be used with a triac sink controller. The actuator internal common reference is not compatible.
- Ⓐ Actuators may be connected in parallel if not mechanically mounted to the same shaft. Power consumption and input impedance must be observed.
- Ⓐ Actuators with plenum rated cable do not have numbers on wires; use color codes instead.



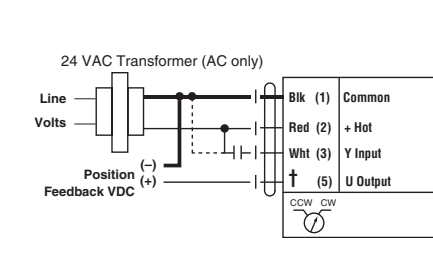
VDC / 4 to 20 mA



Override Control Min, Mid, Max Postions



Auxiliary Switches



PWM

- OG Orange
- Anaranjado Anaranjado
- Orange Orange
- Alaranjado Alaranjado
- PK Pink
- Rosado Rosado
- Rosa Rosa
- Cor-de ros Cor-de ros
- WH White
- Blanco Blanco
- Blanc Blanc
- Branco Branco
- RD Red
- Rojo Rojo
- Rouge Rouge
- Vermelho Vermelho
- BK Black
- Negro Negro
- Noir Noir
- Preto Preto