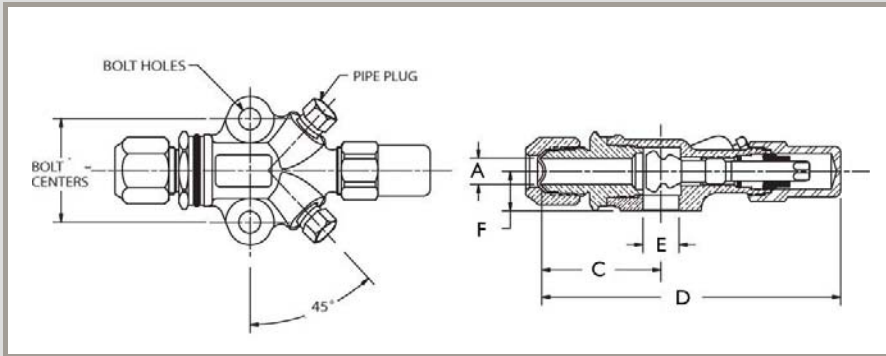




Features:

- Maximum abnormal pressure (MAP): 700 psig, 48 bar
- Continuous operating temperature (COT): -40°F/300°F, -40°C/149°C
- Compatible with all CFC, HCFC and HFC refrigerants and oils
- UL/cUL Recognized, Conforms to Pressure Equipment Directive 97/23/EC
- 100% tested
- Asbestos-free valve packing
- Valve openings designed for maximum flow and minimum pressure drop



Valve Part Number	Kit Part Number *	A		C		D		E		F		Bolt Hole Diameter		Pipe Plug Size		Flange Thickness		Seat Position	Valve Wt		Kit Wt		
		in	mm	in	mm	in	mm	in	mm	in	mm	in	mm	in	mm	in	mm		lb	kg	lb	kg	
A 16302	A 17518	3/8	10	1.73	44	4.45	113	0.56	14	0.62	16	1 5/8	41	.34	9	1/8	7/8	22	Mid	1.20	0.54	1.24	0.56
A 16303	A 17519	1/2	13	1.86	47	4.67	119	0.56	14	0.62	16	1 5/8	41	.34	9	1/8	7/8	22	Mid	1.17	0.53	1.17	0.53
A 16304	A 17520	5/8	17	1.99	51	4.80	122	0.56	14	0.62	16	1 5/8	41	.34	9	1/8	7/8	22	Mid	1.23	0.56	1.27	0.58

Torque To Seal

Front Seat		Back Seat		Pack Gland		Pipe Plug		Plastic Cap		Brass Cap		Steel Cap	
(ft-lb)	(N-m):	(ft-lb)	(N-m):	(ft-lb)	(N-m):	2 - 3 Threads Exposed		(ft-lb)	(N-m)	(ft-lb)	(N-m)	(ft-lb)	(N-m)
14 - 18	19 - 24	14 - 18	19 - 24	8 - 12	11 - 16	2 - 3 Threads Exposed		NA	NA	20 - 30	27 - 41	3 - 5	4 - 7

References

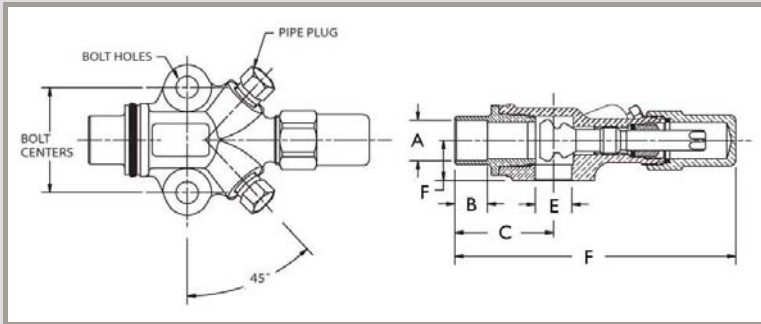
Valve Part Number	Body Number	Standard Seal Cap				Replacement Seal Cap				Replacement Kit**	Valve Kit *	Manufacturer Reference	
		Material	Seal Cap	Gasket	O-ring Kit	Plastic	Brass***	Steel	Cast Iron			Carrier	Copeland
A 16302	A 09464	Steel	A 04566			P 34627	A 16474	A 04566		A 17420	A 17518		998-0510-15
A 16303	A 09464	Steel	A 04566			P 34627	A 16474	A 04566		A 17420	A 17519		998-0510-16
A 16304	A 09464	Steel	A 04566			P 34627	A 16474	A 04566		A 17420	A 17520		998-0510-17

* Valve kit includes valve, gasket and bolts
 ** Replacement kit contains components to pack stem (pack gland, packing and pack washer)
 *** Cap and cap gasket kit
 **** Seal cap and o-ring kit
 ***** O-ring included



Features:

- Maximum abnormal pressure (MAP): 700 psig, 48 bar
- Continuous operating temperature (COT): -40°F/300°F, -40°C/149°C
- Compatible with all CFC, HCFC and HFC refrigerants and oils
- UL/cUL Recognized, Conforms to Pressure Equipment Directive 97/23/EC
- 100% tested
- Asbestos-free valve packing
- Valve openings designed for maximum flow and minimum pressure drop



Valve Part	Kit Part Number *	A		B		C		D		E		F		Bolt Centers in mm	Bolt Hole Diameter in mm	Pipe Plug Size in	Flange Thickness		Seat Position	Valve Wt		Kit Wt	
		in	mm	in	mm	in	mm	in	mm	in	mm	in	mm				in	mm		lb	kg	lb	kg
A 16307	A 17510	3/8	10	0.31	8	1.27	32	4.07	103	0.56	14	0.62	16	15/8 41	.34	9	1/8	7/8 22	Front	0.69	0.31	0.73	0.33
A 16308	A 17511	1/2	13	0.38	10	1.40	36	4.20	107	0.56	14	0.62	16	15/8 41	.34	9	1/8	7/8 22	Front	0.86	0.39	0.90	0.41
A 16309	A 17512	5/8	17	0.50	13	1.52	39	4.32	110	0.56	14	0.62	16	15/8 41	.34	9	1/8	7/8 22	Front	0.88	0.40	0.92	0.42
A 16309	A 17531	5/8	17	0.50	13	1.52	39	4.32	110	0.56	14	0.62	16	15/8 41	.34	9	1/8	7/8 22	1 Turn off Back	0.88	0.40	0.93	0.42

Torque To Seal

Front Seat		Back Seat		Pack Gland		Pipe Plug	Plastic Cap		Brass Cap		Steel Cap	
(ft-lb)	(N-m):	(ft-lb)	(N-m):	(ft-lb)	(N-m):		(ft-lb)	(N-m)	(ft-lb)	(N-m)	(ft-lb)	(N-m)
14 - 18	19 - 24	14 - 18	19 - 24	8 - 12	11 - 16	2 - 3 Threads Exposed	NA	NA	20 - 30	27 - 41	3 - 5	4 - 7

References

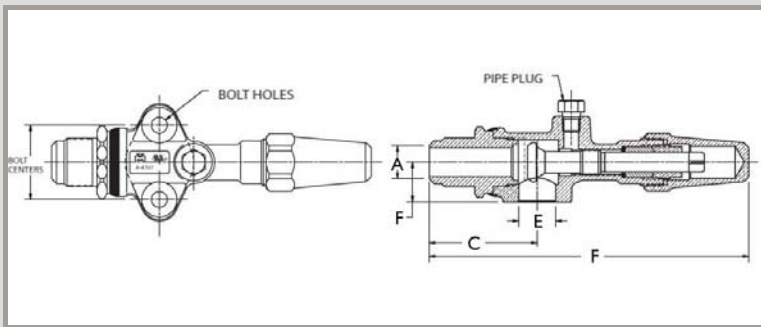
Valve Part Number	Body Number	Standard Seal Cap				Replacement Seal Cap				Replace-ment Kit**	Valve Kit *	Manufacturer Reference	
		Material	Seal Cap	Gasket	O-ring Kit	Plastic	Brass***	Steel	Cast Iron			Carrier	Copeland
A 16307	A 09464	Steel	A 04566			P 34627	A 16474	A 04566		A 17420	A 17510		998-0510-04
A 16308	A 09464	Steel	A 04566			P 34627	A 16474	A 04566		A 17420	A 17511		998-0510-05
A 16309	A 09464	Steel	A 04566			P 34627	A 16474	A 04566		A 17420	A 17512		998-0510-06
A 16309	A 09464	Steel	A 04566			P 34627	A 16474	A 04566		A 17420	A 17531	06DA660-060	

* Valve kit includes valve, gasket and bolts
 ** Replacement kit contains components to pack stem (pack gland, packing and pack washer)
 *** Cap and cap gasket kit
 **** Seal cap and o-ring kit
 ***** O-ring included



Features:

- Maximum abnormal pressure (MAP): 700 psig, 48 bar
- Continuous operating temperature (COT): -40°F/300°F, -40°C/149°C
- Compatible with all CFC, HCFC and HFC refrigerants and oils
- UL/cUL Recognized, Conforms to Pressure Equipment Directive 97/23/EC
- 100% tested
- Asbestos-free valve packing
- Valve openings designed for maximum flow and minimum pressure drop



Valve Part Number	A		B		C		D		E		F		Bolt Centers		Bolt Hole Diameter		Pipe Plug Size	Flange Thickness		Seat Position	Valve Wt	
	in	mm	in	mm	in	mm	in	mm	in	mm	in	mm	in	mm	in	mm	in	in	mm	lb	kg	
A 13166	3/4	19			2.37	60	7.05	179	0.81	21	0.85	22	1 5/8	41	.34	9	1/8	1 1/4	32	Mid	1.78	0.81

Torque To Seal

Front Seat		Back Seat		Pack Gland		Pipe Plug	Plastic Cap		Brass Cap		Steel Cap	
(ft-lb)	(N-m):	(ft-lb)	(N-m):	(ft-lb)	(N-m):		(ft-lb)	(N-m)	(ft-lb)	(N-m)	(ft-lb)	(N-m)
22 - 40	30 - 54	25 - 45	34 - 61	15 - 25	20 - 34	2 - 3 Threads Exposed	Hand Tight	Hand Tight	40 - 50	54 - 68	NA	NA

References

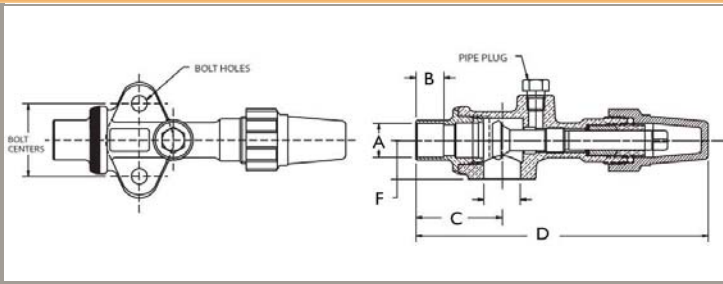
Valve Part Number	Body Number	Material	Standard Seal Cap			Replacement Seal Cap			Replace-ment Kit**	Valve Kit *	Manufacturer Reference	
			Seal Cap	Gasket	O-ring Kit****	Plastic	Brass****	Steel			Cast Iron	Carrier
A 13166	A 04707	Brass	A 04775	A 04710	A 15099				A 15099		A 17419	

- * Valve kit includes valve, gasket and bolts
- ** Replacement kit contains components to pack stem (pack gland, packing and pack washer)
- *** Cap and cap gasket kit
- **** Seal cap and o-ring kit
- ***** O-ring included



Features:

- Maximum abnormal pressure (MAP): 700 psig, 48 bar
- Continuous operating temperature (COT): -40°F/300°F, -40°C/149°C
- Compatible with all CFC, HCFC and HFC refrigerants and oils
- UL/cUL Recognized, Conforms to Pressure Equipment Directive 97/23/EC
- 100% tested
- Asbestos-free valve packing
- Valve openings designed for maximum flow and minimum pressure drop



Valve Part Number	Kit Part Number	A		B		C		D		E		F		Bolt Centers		Bolt Hole Diameter		Pipe Plug Size	Flange Thickness		Seat Position	Valve Wt		Kit Wt	
		in	mm	in	mm	in	mm	in	mm	in	mm	in	mm	in	mm	in	mm	in	in	mm	mm	lb	kg	lb	kg
A 16310		3/4	19	0.62	16	1.91	49	6.49	165	0.81	21	0.88	22	15/8	41	.34	9	1/8	1 21/64	34	Front	1.64	0.74		
A 16311	A 17515	7/8	22	0.76	19	1.97	50	6.55	166	0.81	21	0.88	22	15/8	41	.34	9	1/8	1 21/64	34	Front	1.63	0.74	1.55	0.70
B 32197	A 17529	7/8	22	0.76	19	1.97	50	6.47	164	0.81	21	0.88	22	1 3/4	44	.34	9	1/8	1 21/64	34	Mid	1.42	0.64	1.69	0.77
A 15500		1 1/8	29	0.90	23	2.06	52	6.64	169	0.81	21	0.88	22	1 5/8	41	.34	9	1/8	1 21/64	34	Back	1.43	0.65		
A 16312	A 17516	1 1/8	29	0.90	23	2.06	52	6.64	169	0.81	21	0.88	22	1 5/8	41	.34	9	1/8	1 21/64	34	Front	1.66	0.75	1.55	0.70

Torque To Seal

Front Seat		Back Seat		Pack Gland		Pipe Plug	Plastic Cap		Brass Cap		Steel Cap	
(ft-lb)	(N-m):	(ft-lb)	(N-m):	(ft-lb)	(N-m):		(ft-lb)	(N-m)	(ft-lb)	(N-m)	(ft-lb)	(N-m)
22 - 40	30 - 54	25 - 45	34 - 61	15 - 25	20 - 34	2 - 3 Threads Exposed	Hand Tight	Hand Tight	40 - 50	54 - 68	NA	NA

References

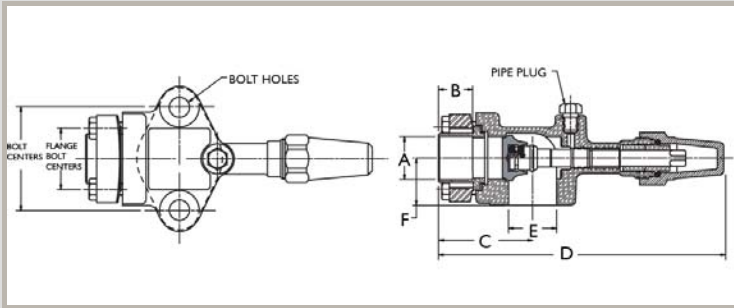
Valve Part Number	Body Number	Standard Seal Cap			Replacement Seal Cap			Replacement Kit**	Valve Kit *	Manufacturer Reference	
		Material	Seal Cap *****	Kit	Plastic*****	Brass****	Steel			Cast Iron	Carrier
A 16310	A 04707	Plastic	P 34632	P 35915	P 34632	A 15099		A 17419			
A 16311	A 04707	Plastic	P 34632	P 35915	P 34632	A 15099		A 17419	A 17515		998-0510-12
B 32197	A 04715	Plastic	P 34632	P 35915	P 34632	A 15099		A 17419	A 17529	06DA660-062	
A 15500	A 04707	Plastic	P 34632	P 35915	P 34632	A 15099		A 17419			
A 16312	A 04707	Plastic	P 34632	P 35915	P 34632	A 15099		A 17419	A 17516		998-0510-13

- * Valve kit includes valve, gasket and bolts
- ** Replacement kit contains components to pack s
- *** Cap and cap gasket kit
- **** Seal cap and o-ring kit
- ***** O-ring included



Features:

- Maximum abnormal pressure (MAP): 700 psig, 48 bar
- Continuous operating temperature (COT): -40°F/300°F, -40°C/149°C
- Compatible with all CFC, HCFC and HFC refrigerants and oils
- UL/cUL Recognized, Conforms to Pressure Equipment Directive 97/23/EC
- 100% tested
- Asbestos-free valve packing
- Valve openings designed for maximum flow and minimum pressure drop



Valve Part Number	Kit Part Number *	A		B		C		D		E		F		Bolt Centers		Bolt Hole Diameter		Pipe Plug Size	Flange Thickness		Seat Position	Valve Wt		Kit Wt	
		in	mm	in	mm	in	mm	in	mm	in	mm	in	mm	in	mm	in	mm	in	mm	lb		kg	lb	kg	
A 16313		3/4	19	0.62	16	2.31	59	7.33	186	1.25	32	1.25	32	2 3/4	70	.531	13	1/8	1	25	Front	3.93	1.78		
A 16314	A 17527	7/8	22	0.75	19	2.31	59	7.33	186	1.25	32	1.25	32	2 3/4	70	.531	13	1/8	1	25	Front	3.90	1.77	4.05	1.84
A 16315	A 17525	1 1/8	29	0.91	23	2.47	63	7.49	190	1.25	32	1.25	32	2 3/4	70	.531	13	1/8	1	25	Front	3.66	1.66	4.03	1.83
A 16316	A 17526	1 3/8	35	0.97	25	2.47	63	7.49	190	1.25	32	1.25	32	2 3/4	70	.531	13	1/8	1	25	Front	3.65	1.66	3.80	1.72

Torque To Seal

Front Seat		Back Seat		Pack Gland		Pipe Plug		Plastic Cap		Brass Cap		Steel Cap	
(ft-lb)	(N-m):	(ft-lb)	(N-m):	(ft-lb)	(N-m):	2 - 3 Threads Exposed		(ft-lb)	(N-m)	(ft-lb)	(N-m)	(ft-lb)	(N-m)
30 - 40	41 - 54	22 - 45	30 - 61	15 - 25	20 - 34	2 - 3 Threads Exposed		Hand Tight	Hand Tight	40 - 50	54 - 68	NA	NA

References

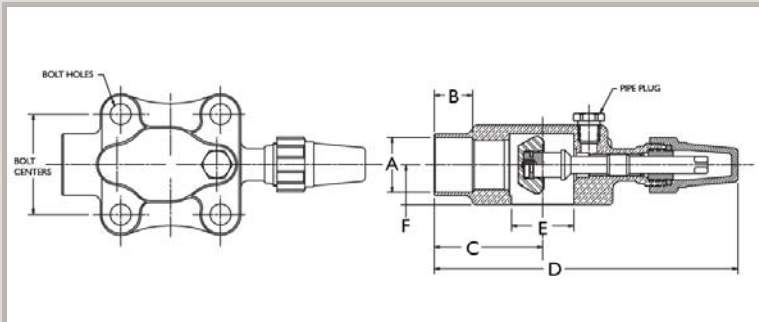
Valve Part Number	Body Number	Standard Seal Cap				Replacement Seal Cap				Replacement Kit**	Valve Kit *	Manufacturer Reference			
		Material	Seal Cap ****	Gasket	O-ring	Kit	Plastic *****	Brass***	Steel			Cast Iron	Carrier	Copeland	
A 16313	A 03416	Plastic	P 34632			P 35915	P 34632	A 15099			A 17419				
A 16314	A 03416	Plastic	P 34632			P 35915	P 34632	A 15099			A 17419	A 17527			998-0510-10
A 16315	A 03416	Plastic	P 34632			P 35915	P 34632	A 15099			A 17419	A 17525			998-0510-09
A 16316	A 03416	Plastic	P 34632			P 35915	P 34632	A 15099			A 17419	A 17526			998-0510-11

* Valve kit includes valve, gasket and bolts
 ** Replacement kit contains components to pack s
 *** Cap and cap gasket kit
 **** Seal cap and o-ring kit
 ***** O-ring included



Features:

- Maximum abnormal pressure (MAP): 700 psig, 48 bar
- Continuous operating temperature (COT): -40°F/300°F, -40°C/149°C
- Compatible with all CFC, HCFC and HFC refrigerants and oils
- UL/cUL Recognized, Conforms to Pressure Equipment Directive 97/23/EC
- 100% tested
- Asbestos-free valve packing
- Valve openings designed for maximum flow and minimum pressure drop
- Flat Gasket Surface



Valve Part Number	Kit Part Number	A		B		C		D		E		F		Bolt Centers		Bolt Hole Diameter		Pipe Plug Size	Flange Thickness		Seat Position	Valve Wt		Kit Wt	
		in	mm	in	mm	in	mm	in	mm	in	mm	in	mm	in	mm	in	mm	in	mm	in	mm	lb	kg	lb	kg
B 32807	A 17532	1 1/8	29	0.90	23	2.72	69	7.61	193	1.56	40	1.00	25	2.5	64	.53	13	1/4			Mid	4.00	1.81	4.47	2.03
B 32808	A 17533	1 3/8	35	0.96	24	2.72	69	7.61	193	1.56	40	1.00	25	2.5	64	.53	13	1/4			Mid	3.98	1.80	4.67	2.12
B 32930	A 17534	1 5/8	41	1.10	28	2.88	73	7.89	200	1.81	46	1.03	26	2.5	64	.53	13	1/4			Mid	4.13	1.87	4.67	2.12

Torque To Seal

Front Seat		Back Seat		Pack Gland		Pipe Plug	Plastic Cap		Brass Cap		Steel Cap	
(ft-lb)	(N-m)	(ft-lb)	(N-m)	(ft-lb)	(N-m)		(ft-lb)	(N-m)	(ft-lb)	(N-m)	(ft-lb)	(N-m)
22 - 40	30 - 54	25 - 45	34 - 61	10 - 15	14 - 20	2 - 3 Threads Exposed	Hand Tight	Hand Tight	40 - 50	54 - 68	NA	NA

References

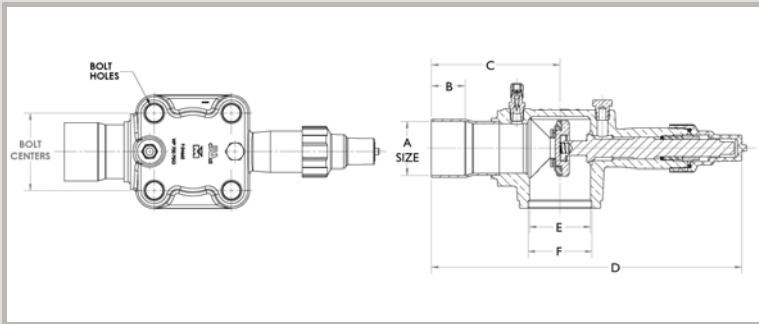
Valve Part Number	Body Number	Standard Seal Cap			Replacement Seal Cap			Replacement Kit**	Valve Kit *	Manufacturer Reference	
		Material	Seal Cap *****	Kit	Plastic*****	Brass*****	Steel			Cast Iron	Carrier
B 32807	F 27950	Plastic	P 34632	P 35915	P 34632	A 15099		A 17418	A 17532	06DA660-063	
B 32808	F 27955	Plastic	P 34632	P 35915	P 34632	A 15099		A 17418	A 17533	06DA660-065	
B 32930	F 29201	Plastic	P 34632	P 35915	P 34632	A 15099		A 17418	A 17534	06DA660-090	

- * Valve kit includes valve, gasket and bolts
- ** Replacement kit contains components to pack s
- *** Cap and cap gasket kit
- **** Seal cap and o-ring kit
- ***** O-ring included



Features:

- Maximum abnormal pressure (MAP): 700 psig, 48 bar
- Continuous operating temperature (COT): -40°F/300°F, -40°C/149°C
- Compatible with all CFC, HCFC and HFC refrigerants and oils
- UL/cUL Recognized, Conforms to Pressure Equipment Directive 97/23/EC
- 100% tested
- Asbestos-free valve packing
- Valve openings designed for maximum flow and minimum pressure drop



Valve Part Number	Kit Part Number *	A		B		C		D		E		F		Bolt Centers		Bolt Hole Diameter	Pipe Plug Size	Access Port	Seat Position	Valve Wt		Kit Wt		
		in	mm	in	mm	in	mm	in	mm	in	mm	in	mm	in	mm					lb	kg	lb	kg	
A 17495		2 1/8	54	1.34	34	5.09	129	12.31	313	2.42	61	2.53	64	3.06	78	.69	17	1/4	0.25	Mid	11.84	#####		

Torque To Seal

Front Seat		Back Seat		Pack Gland		Pipe Plug		Plastic Cap		Brass Cap		Steel Cap	
(ft-lb)	(N-m):	(ft-lb)	(N-m):	(ft-lb)	(N-m):	(ft-lb)	(N-m):	(ft-lb)	(N-m)	(ft-lb)	(N-m)	(ft-lb)	(N-m)
45 - 65	61 - 88	45 - 65	61 - 88	35 - 45		240 - 300		Hand Tight	Hand Tight				

References

Valve Part Number	Body Number	Material	Standard Seal Cap		Replacement Seal Cap			Replacement Kit**	Valve Kit *	Manufacturer Reference	
			Seal Cap *****	Kit	Plastic*****	Brass****	Steel			Cast Iron	Carrier
A 17495	F 34665	Plastic	N 02849	A 17668	A 17668	A 15099		B 33816	A 17422		

**** Seal cap and o-ring kit
 ***** O-ring included