



NEMA Motor Data

MLFB-Ordering data : 1LE2321-2CD21-6AA3

Client order no. :
 Order no. :
 Offer no. :
 Remarks :

Item no. :
 Consignment no. :
 Project :

Nameplate Data	Mounting and motor protection
----------------	-------------------------------

Type: SD100 - NEMA Premium Efficiency

HP	15.0	Rating	Cont.
Voltage	(16) 230/460V, STD	Ins. Class	Class F (Standard)
Amps	46.0 / 23.0 A	S.F.	1.15
FL RPM	875	Amb. Temp.	+40C TO -20C
FL Efficiency	91.0 %	Temp. Rise	Class B
FRAME	286T	kVA Code	G
DE AFBMA	50BC03JP30	NEMA Des	B
ODE AFBMA	50BC03JP30	Mtr WT	430
60 Hertz	3 Ph TEFC	IP	55

Type of construction	(A) Foot mounted - End shield
Motor protection	(A) Without Protection
Terminal box design	(3) F-1, Standard Floor Mount, T. Box

Bearing Data		
	DE	ODE
Bearing Size	6310 Z C3 S0	6310 Z C3 S0
Bearing Type	Ball Bearing	Ball Bearing
AFBMA	50BC03JP30	50BC03JP30

Typical Performance Data					
--------------------------	--	--	--	--	--

Load	No Load	1/2	3/4	Full Load	LRC
Efficiency		90.1 %	91.4 %	91.0 %	
Power Factor		50.0	60.0	67.0	
Current (A)	14.0 A	15.6 A	19.2 A	46.0 / 23.0	116.0 A
Inverter Duty	VT	20:1	CT	4:1	

Mechanical Data				
-----------------	--	--	--	--

SAFE STALL TIME	HOT (s)	18	COLD (s)	35
Rtr wt (lbs)	104.72	Rtr WK2	3.80	
FLT (lb-ft)	90.0	LRT (%)	133	BDT (%) 220
Ext Load Inertia (WK2) Capability	400.0 lb-ft ²			
Brake:	without			

Typical Noise Data										
--------------------	--	--	--	--	--	--	--	--	--	--

A-weighted Sound	Octave Band Center Frequencies Hertz (Hz)								
Pressure Level	125	250	500	1000	2000	4000	8000	SPL	61
at 3 feet	42	49	55	52	54	56	50	SPwrL	72

Wiring Connection Information					
-------------------------------	--	--	--	--	--

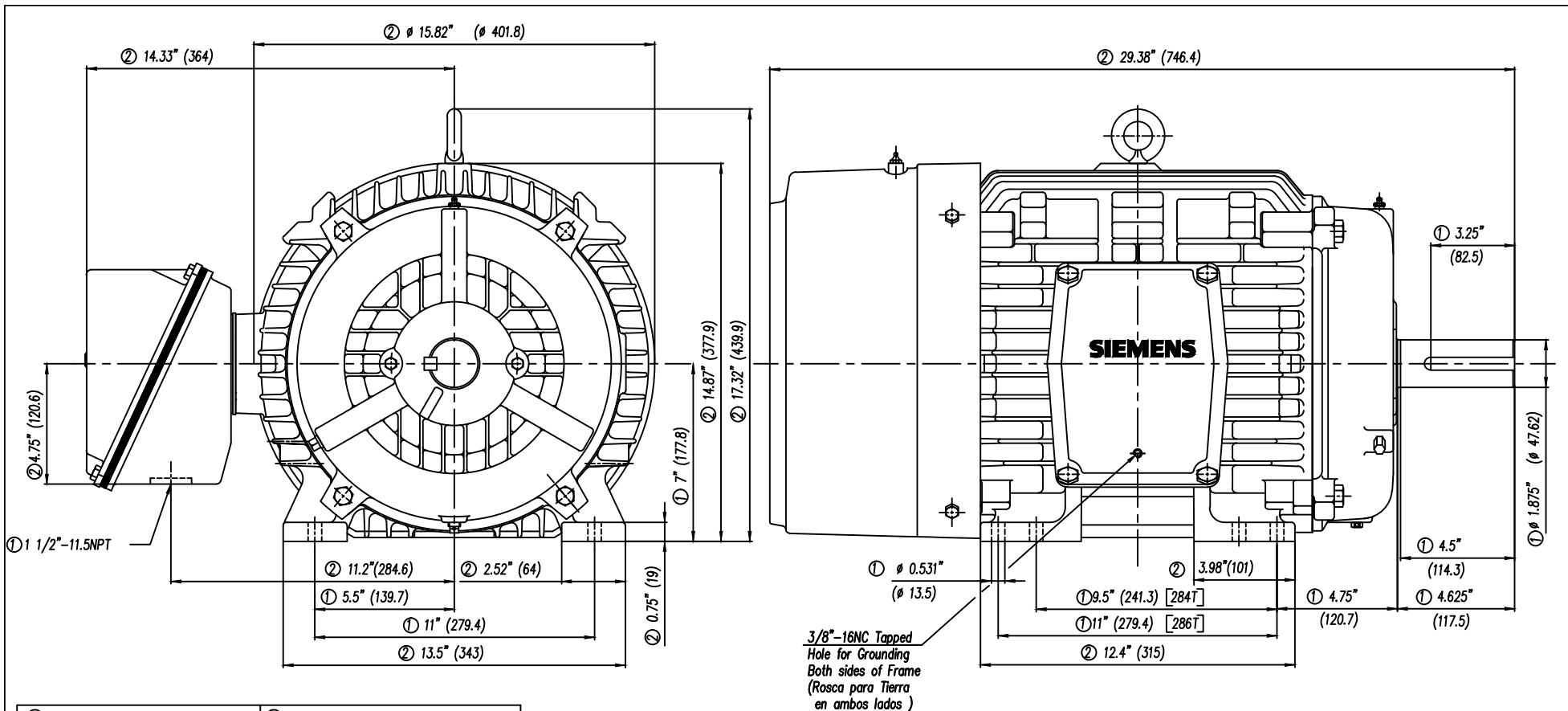
Description	3 PHASE - 9 LEAD - DELTA				
Voltage	L1	L2	L3	Connected together	
LOW	T1 T7 T6	T2 T8 T4	T3 T9 T5	--- -- Δ Δ	
HIGH	T1	T2	T3	T4 T7-T5 T8-T6 T9 Δ	

Special design :

Lubrication Information	
-------------------------	--

Manufacturer	Mobil Polyrex EM or equal
Type	Polyurea (standard)
DE Capacity (oz.)	2.60
ODEnd Capacity (oz.)	2.60

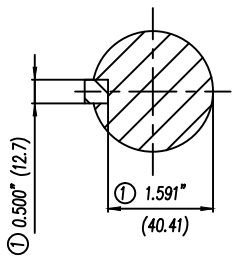
Relubricate bearings every six months (more frequent if conditions require). See Instruction Manual.



- | | |
|---|--|
| ① Tolerances According to NEMA Std. | ① Tolerancias acorde a NEMA Std. |
| ② All these dimensions corresponding to assemblies and castings shall have a tolerance as per DIN standard 1686-GTB 19. | ② Todas estas dimensiones correspondientes a ensambles y fundición en bruto tendrán una tolerancia según DIN 1686-GTB-19 |
| ③ Not According to NEMA Std. | ③ No Acorde a NEMA Std. |

CERTIFIED PRINT/CERTIFICACION

CUSTOMER/CLIENTE							
FOR/ORDEN COMPRA				FOR/ORDEN CLIENTE			
IP	IPW	FRAME/ARM.	TYPE/TIPO	VOLTS	PH/FASE	HZ	



Keyseat detail
Detalle Cuñero

Tol. in mm. acc. to/Tol. en mm. según DIN-1686-GTB-19			European Projection/ Proyeccion Europea	Date/Fecha	Name/Nombre
Over/desde	to/hasa				
---	18	± 4.5	Dim. in inches/Dim. en pulg. Drawn/Elab. 08/01/09 J. Carvajal Check/Rev. 13/01/09 P. Velasco Std.Ckd./Auf.	Modific. NOTE: Changed the type of motor NOTA: Se cambio el tipo de motor	Scale/ Escala ---
18	30	± 4.7			
30	50	± 5			
50	80	± 5.5			
80	120	± 6			
120	180	± 6.5			
180	250	± 7			
250	315	± 7.5			
315	400	± 8			
400	500	± 8.5			
500	630	± 9.5	SIEMENS GUADALAJARA FACTORY	Outline/Dimensiones Type/ Tipo: SD100 mNP FRAME/ARM. 284/286T	--- -/-
630	800	± 10			

Outline/Dimensiones

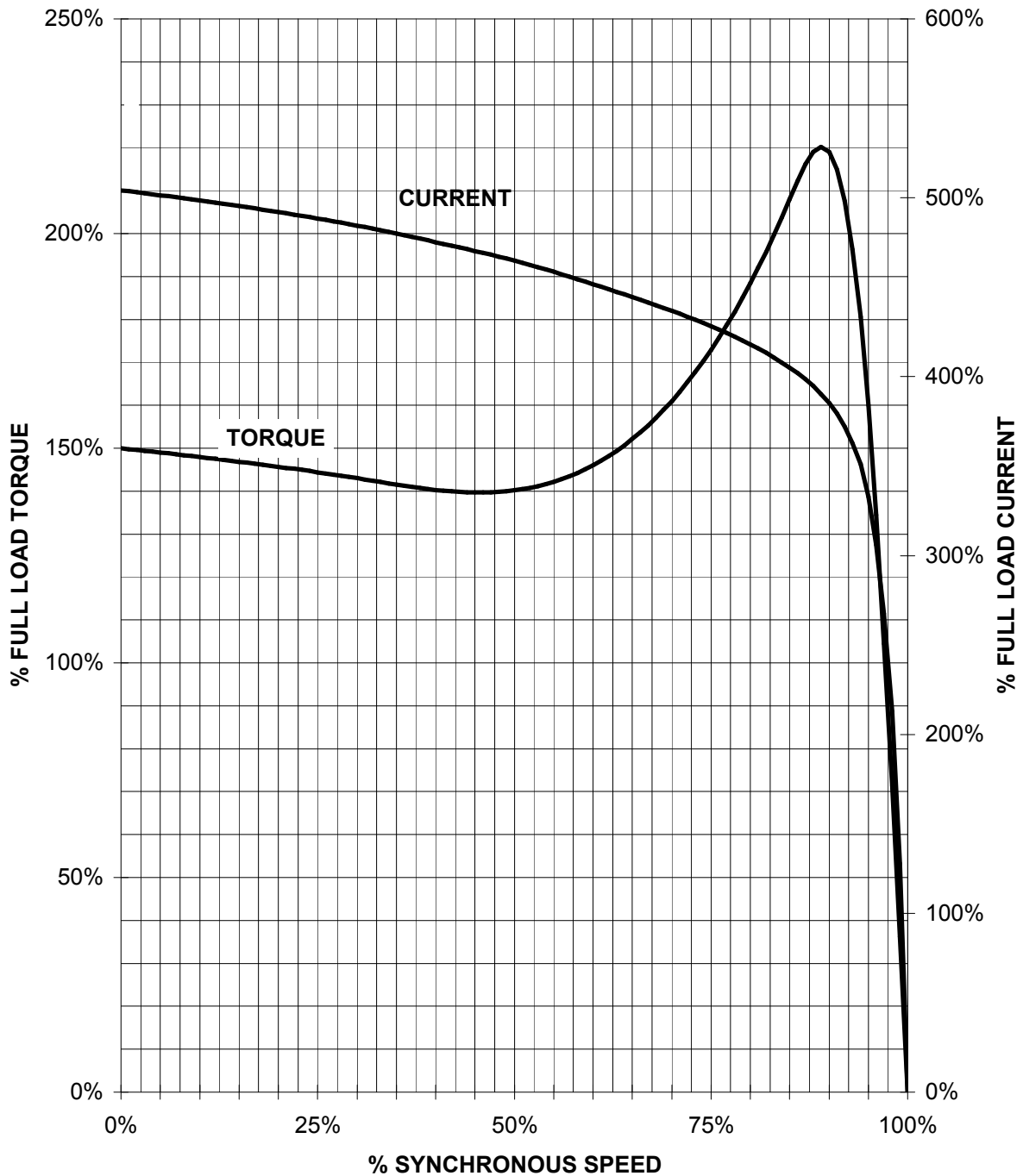
3MSE 710 1155

Ref. 3MSE 710 0652a) Rep./
3MSE 710 0653 Sap.

SIEMENS INDUSTRY, INC.

HP 15 VOLTS < 600V RPM 900 TYPE SD100
HZ 60 PHASE 3 FRAME 286T NEMA B

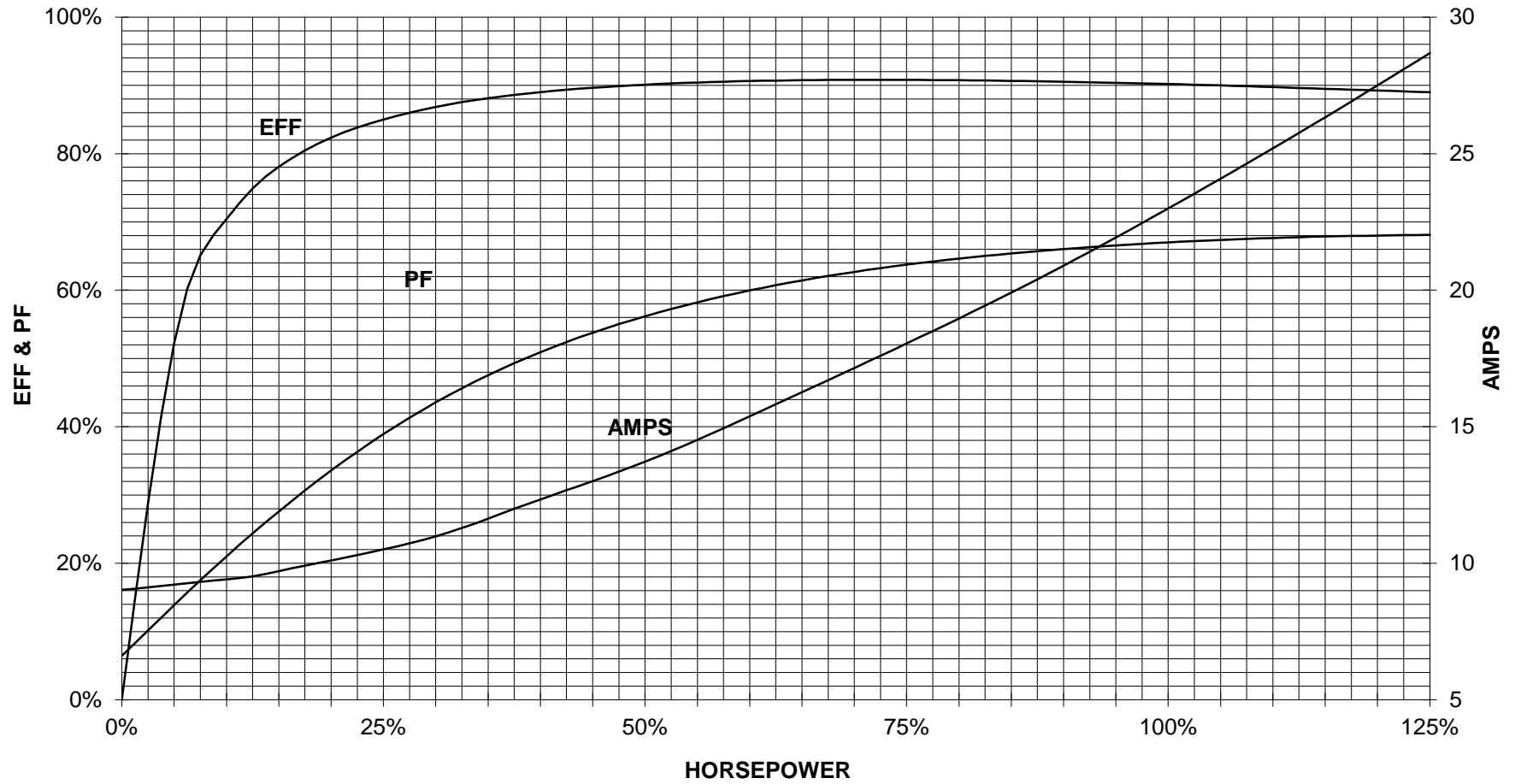
TORQUE & CURRENT VS. SPEED



CUSTOMER: _____ ORDER#: _____

15 HP 900 RPM 286T FRAME 460 VOLTS 3 PHASE NEMA DESIGN B

SIEMENS INDUSTRY, INC.
PERFORMANCE CURVE
SD100



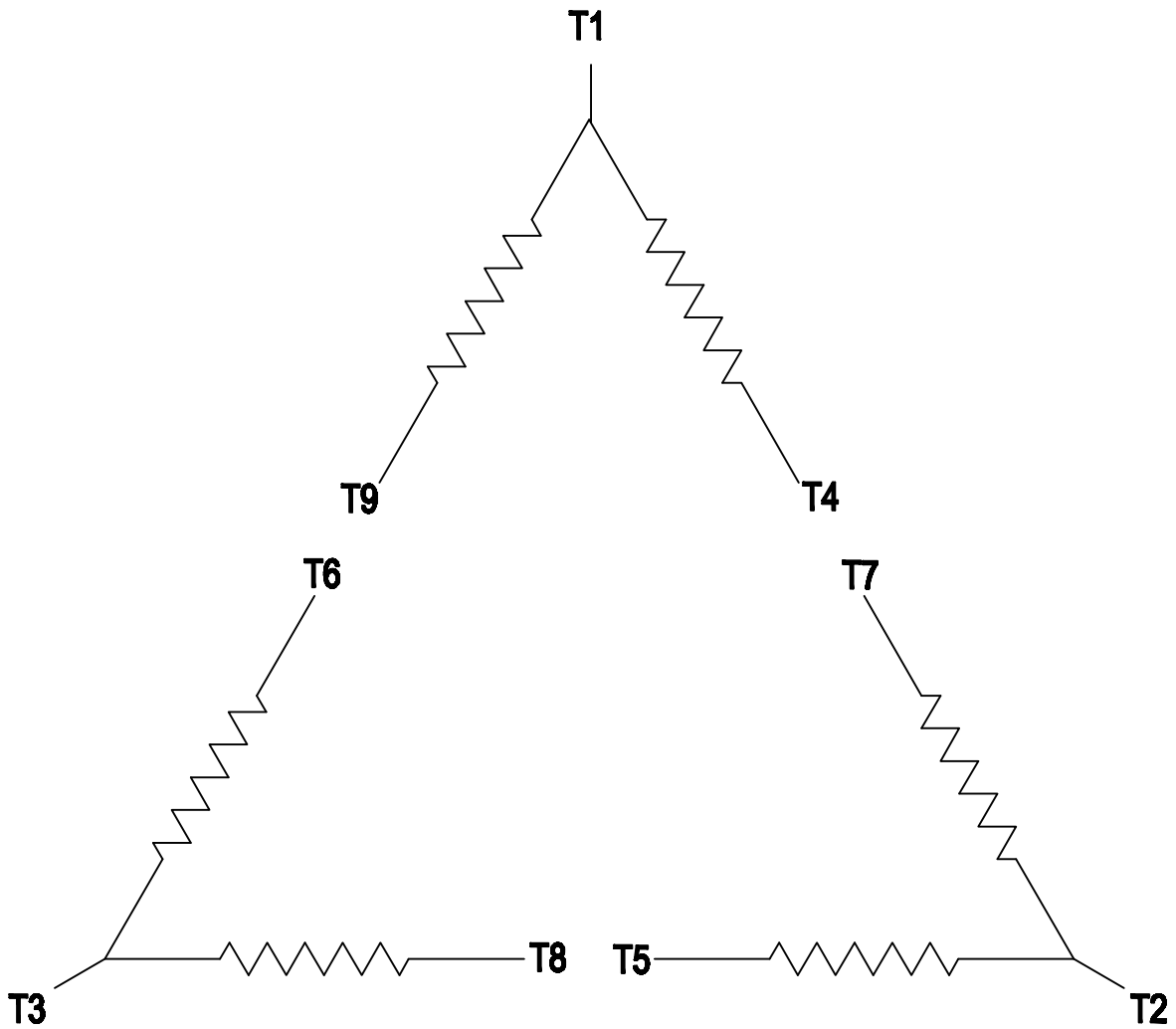
CUSTOMER _____ ORDER # _____ PO # _____

PERFORMANCE BASED ON DESIGN CALCULATIONS. SUBJECT TO CHANGE WITHOUT NOTICE.

REV. 1

2

1



B

B

A

A

3 PHASE - 9 LEADS - DELTA

VOLTS	LINES			CONNECTED TOGETHER	CONN.
	L1	L2	L3		
LOW	T1 T7 T6	T2 T8 T4	T3 T9 T5		△ △
HIGH	T1	T2	T3	T4 T7-T5 T8-T6 T9	△

THIS IS A CAD DRAWING
DO NOT MAKE MANUAL CHANGES

01	09-27-07	TYPE		-CONFIDENTIAL-				PROPERTY OF Siemens Little Rock, AR	
FRAME		HP		NAME WIRING DIAGRAM					
VOLTS		RPM	HZ	PH 3		Customer			
DRAWN 9.24.07		DATE		JRH		PO #		SO #	
CHECKED		DATE		APP		SHEET 1 OF 1		Sim. To	
						PART NO. 51-382-114-504		A	

2

1