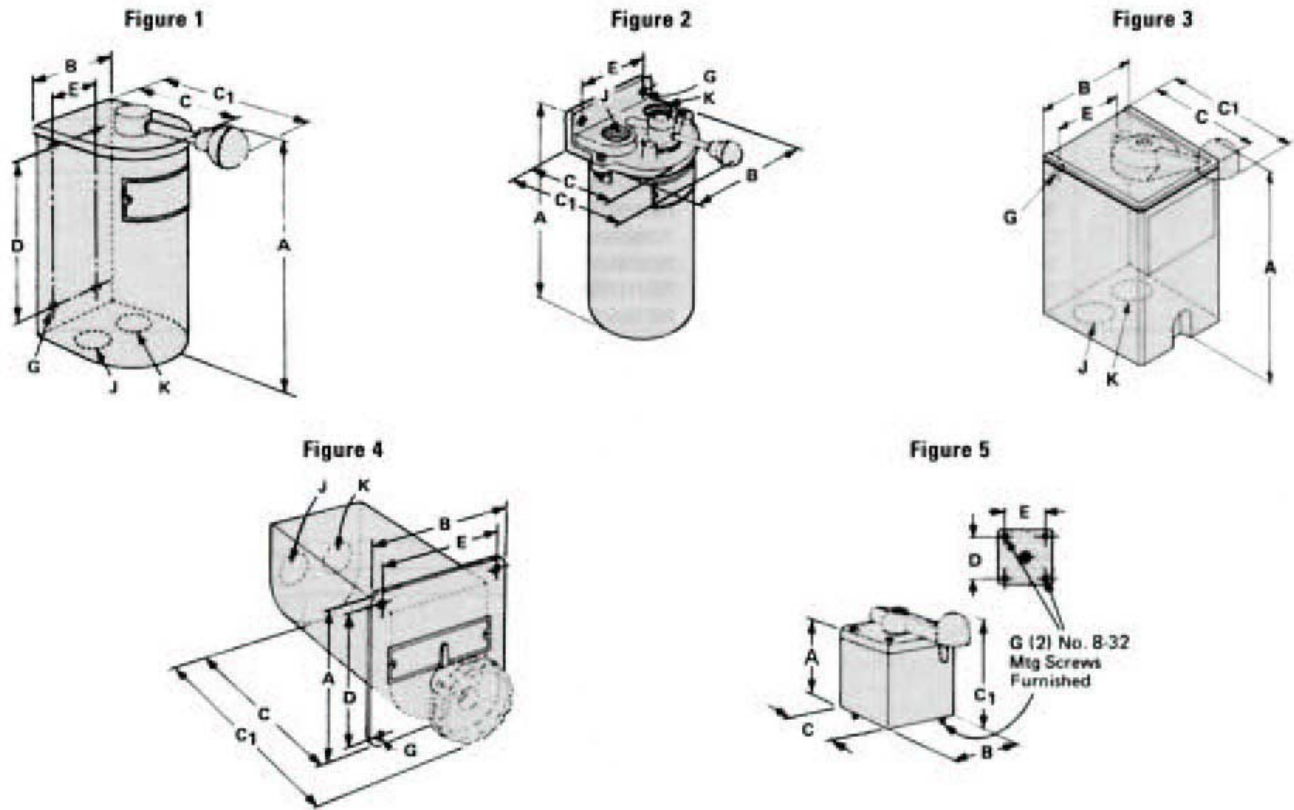


## Wiring



Catalog Number	Figure	Outline Dimensions				Mtg. Dimensions		Mtg. Screw	Conduit Size		Approx. Ship Wt. Lbs. (Kg)
		A	B	C	C1	D	E	G	J	K	
A14	5	2.20 (56)	2.38 (60)	2.38 (60)	3.20 (81)	1 11/16 (43)	1 11/16 (43)	8	-	-	2 (1)
58R44, 58R327	3	5.25 (133)	2.50 (64)	2.75 (70)	4.38 (111)	-	1 5/8 (41)	1/4	1/2	1/2	2 (1)
J2, J5, J2166A	1	4.75 (121)	3.19 (81)	3.63 (92)	4.69 (119)	3 13/16 (97)	2 (51)	1/4	1/2	1/2	3 (1)
JV2, JV5	1	7.94 (202)	3.19 (81)	3.19 (81)	4.69 (119)	5 15/16 (151)	2 (51)	1/4	1/4	1/2	4 (2)
R2453	1	4.38 (111)	2.31 (59)	2.94 (75)	4.56 (116)	-	1 5/8 (41)	1/4	1/2	1/2	2 (1)
TT3	1	9.53 (242)	4.81 (122)	5.53 (141)	6.47 (164)	5 5/8 (143)	3 3/4 (95)	1/4	1 1/4	1	8 (4)
T3	1	7.56 (218)	4.81 (122)	5.53 (141)	6.47 (164)	5 5/8 (137)	3 3/4 (95)	1/4	1	1	7 (3)
WJ2, WJ5	2	7.63 (194)	5.13 (130)	4.25 (108)	6.13 (156)	-	3 7/16 (87)	3/8	3/4	3/4	7 (3)
WJ2V, 2J5V	2	9.00 (229)	5.13 (130)	4.25 (108)	6.13 (156)	-	3 7/16 (87)	5/16	3/4	3/4	7 (3)
WR44, WR44R WR327A, WR327AR	2	5.19 (132)	4.63 (117)	3.75 (95)	5.44 (138)	-	3 1/2 (89)	1/4	1/2	1/2	5 (2)

**Note:** Dimensions for reference, not for construction.

Dimensions are in inches (mm).