

Natural Gas & Propane Regulators

P32 Superior regulation and excellent stability make the BelGAS P32 natural gas and propane regulator ideal for lower flow applications. Square head adjustment screw allows for easy in-field calibration. The Type P32 is also available with an optional handwheel adjustment. The use of a relief valve is recommended for this product in accordance with NFPA 58.

- 60-mesh screen
- UL listed (Standard P32)
- NACE construction available
- Harmful particles blocked
- Non-Relieving
- Temperature Range -0 to 160°F

P36 The BelGAS P36 gas pressure regulator is preset to your required output pressure. Ideal for areas requiring tamper resistant components or where incidental re-adjustment is a concern. The use of a relief valve is recommended for this product in accordance with NFPA 58.

- 60-mesh screen
- UL listed (Standard P36)
- NACE construction available
- Temperature Range -0 to 160°F
- Harmful particles blocked
- Non-Relieving

P37 The P37 contains many of the same characteristics as the P38, but at a reduced price. At 110 SCFM (16.5 Mbtu/hr), the P37 offers flow rates comparable to current market suppliers. The use of a relief valve is recommended for this product in accordance with NFPA 58.

- Balanced pintle design
- Bubble tight/non-relieving
- 16.5 Mbtu/hr. (110 scfm)
- UL listed
- Bellofram Rolling Diaphragm
- High flow capacity
- Enclosed space use
- High volume applications
- Non-Relieving
- Temperature Range -40 to 200°F

P38 The P38 Non-Relieving Gas and Propane Regulator is a diaphragm-operated device, using a patented balanced pintle design to eliminate unsteady changes in outlet pressure due to inlet pressure fluctuations. The use of a relief valve is recommended for this product in accordance with NFPA 58.

- Balanced pintle design
- Bubble tight/non-relieving
- 27 Mbtu/hr (260 scfm)
- UL listed
- Bellofram Rolling Diaphragm
- Temperature Range -40 to 200°F
- Exceptional flow capacity
- Enclosed space use
- High volume applications
- Minimal effect on output pressure from variation of supply pressure

Applications

- Pneumatic Controllers
- Valve Positioners
- Actuation
- Fuel Gas
- Compressed Air



Specifications

	P32	P36	P37	P38
Sensitivity	1" water column	1" water column	1" water column	1/2" water column
Max. Inlet Pressure	250 PSIG (17 BAR)	250 PSIG (17 BAR)	400 PSIG (28 BAR)	400 PSIG (28 BAR)
Port Size	1/4 NPT	1/4 NPT	1/2, 3/4 NPT	3/8, 1/2, 3/4, 1 NPT
Outlet Ranges	0-10, 0-30, 0-60, 0-120 PSIG (0-0.7, 0-2, 0-4, 0-8 BAR)	0-20, 20-40, 40-60 PSIG (0-1.4, 1.4-2.8, 2.8-4 BAR)	0-10, 0-30, 0-60, 0-125 PSIG (0-0.7, 0-2, 0-4, 0-8 BAR)	0-30, 0-60, 0-125 PSIG (0-2, 0-4, 0-8 BAR)
Adjustment	Adjustment Screw	None	T-Bar	T-Bar
Materials of Construction	Aluminum, Brass, Plated Steel, Buna-N	Aluminum, Brass, Plated Steel, Buna-N	Zinc, Aluminum, Plated Steel, Buna-N, Brass	Zinc, Aluminum, Plated Steel, Buna-N, Brass
Diaphragm Material	Nitrile Elastomer with Polyester Fabric	Nitrile Elastomer with Polyester Fabric	Nitrile Elastomer with Polyester Fabric	Nitrile Elastomer with Polyester Fabric
Approximate Weight	0.85 lbs, 0.38 kg	0.70 lbs, 0.32 kg	1.4 lbs, 0.63 kg	5.0 lbs, 2.25 kg

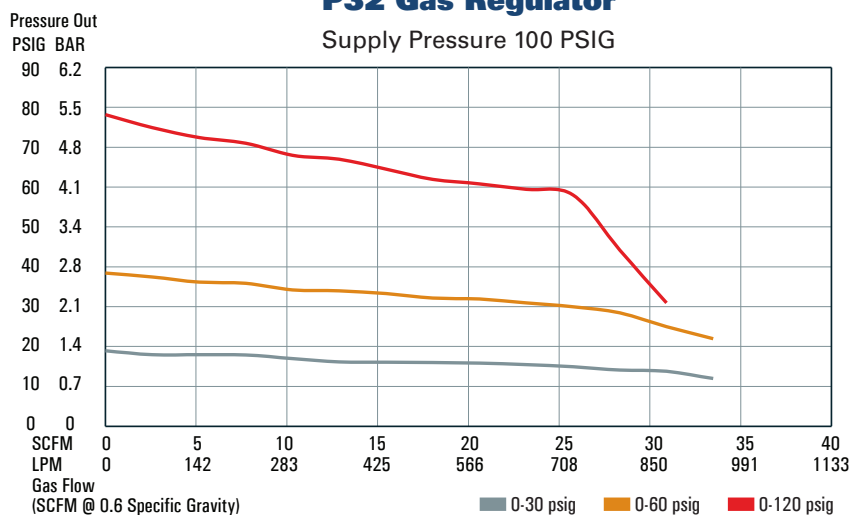
P32, 36, 37 & 38 Part Matrix

P0							0	0	0	
	↑	↑	↑	↑	↑	↑				Regulator
32										P32 regulators
36										P36 regulators
37										P37 regulators
38										P38 regulators
										Body Size
02										1/4" P32 & P36 only
03										3/8" P38 only
04										1/2" P37 & P38 only
06										3/4" P37 & P38 only
08										1" P38 only
										Spring Range (see 'NOTE' for P36)
010										0-10 PSIG 0-0.7 BAR P32 & P37 only
030										0-30 PSIG 0-2 BAR P32, P37, P38
060										0-60 PSIG 0-4.1 BAR P32, P37, P38
120										0-120 PSIG 0-8.3 BAR P32 only
125										0-125 PSIG 0-8.6 BAR P37 & P38 only
										Special Construction
0										None
1										Epoxy Paint P37 & P38 only
2										Tapped supply port for gauge P38 only
3										Both options 1 & 2 P38 only
4										PED Version (for EU) P32, P37 & P38 only
5										Tapped vent P32, P37 & P38 only
6										Options 1 & 5 P37 & P38 only
7										Options 2 & 5 P38 only
										Adjusting Method
0										No Option P36, P37 & P38 only
1										Adjusting Screw P32 only
2										Handwheel P32 only
										Versions
0										Standard
N										NACE P32 & P36 only
							0	0	0	

* NOTE: For P36
Enter the preset value in PSIG,
Example: 10 PSIG = 010
Minimum Pressure = 2 PSIG
Maximum Pressure = 60 PSIG

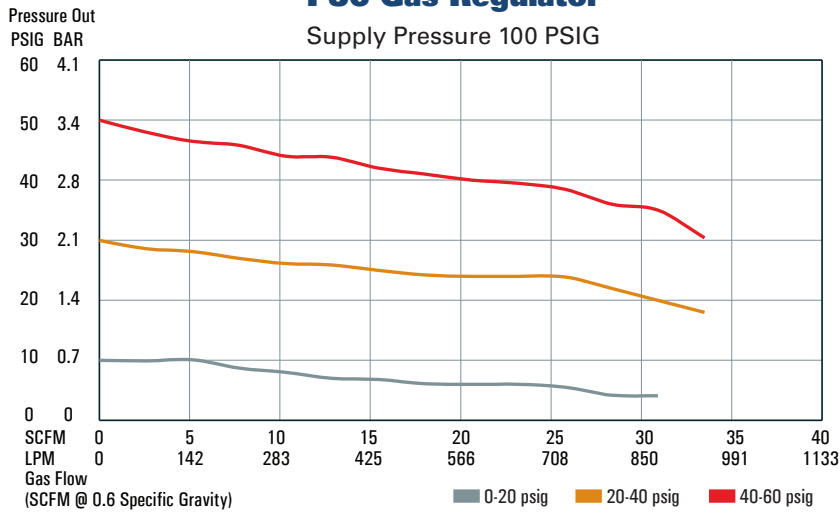
P32 Gas Regulator

Supply Pressure 100 PSIG



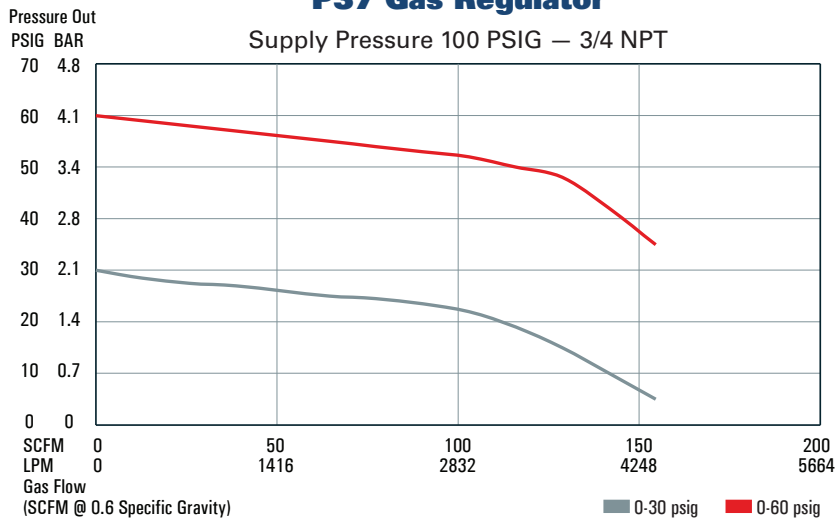
P36 Gas Regulator

Supply Pressure 100 PSIG



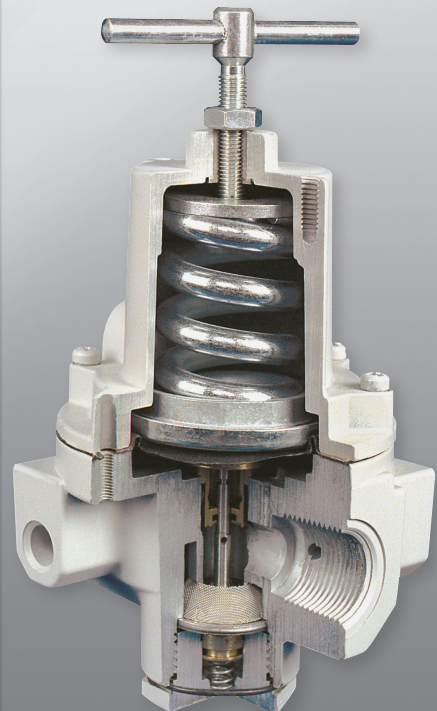
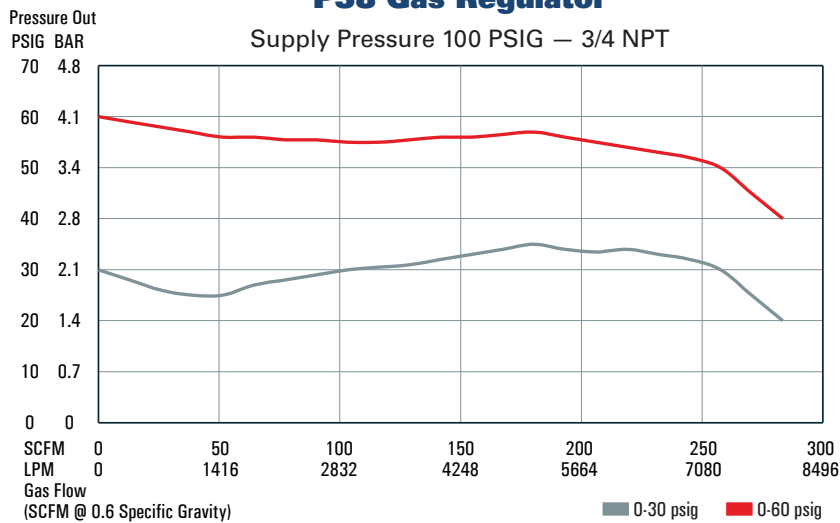
P37 Gas Regulator

Supply Pressure 100 PSIG — 3/4 NPT

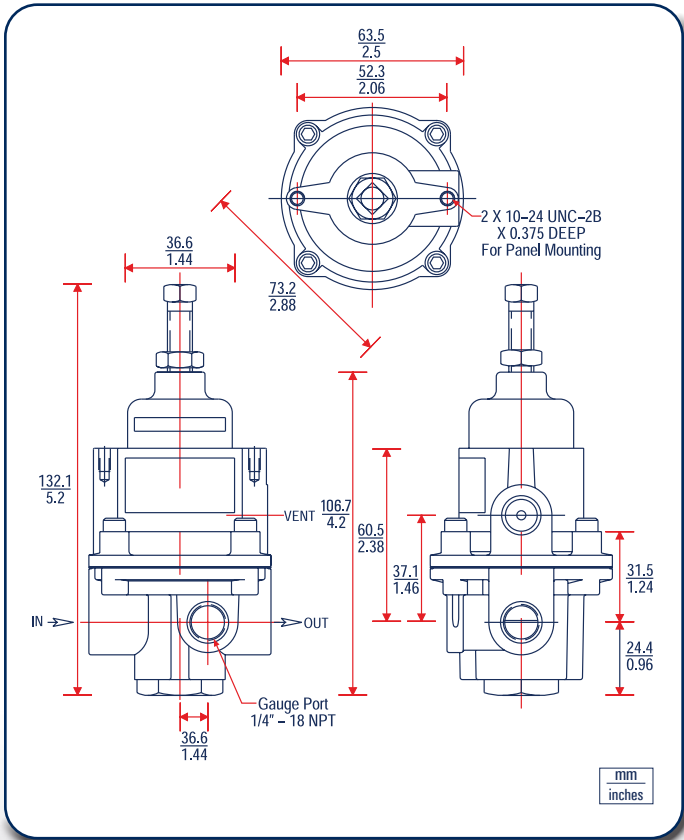


P38 Gas Regulator

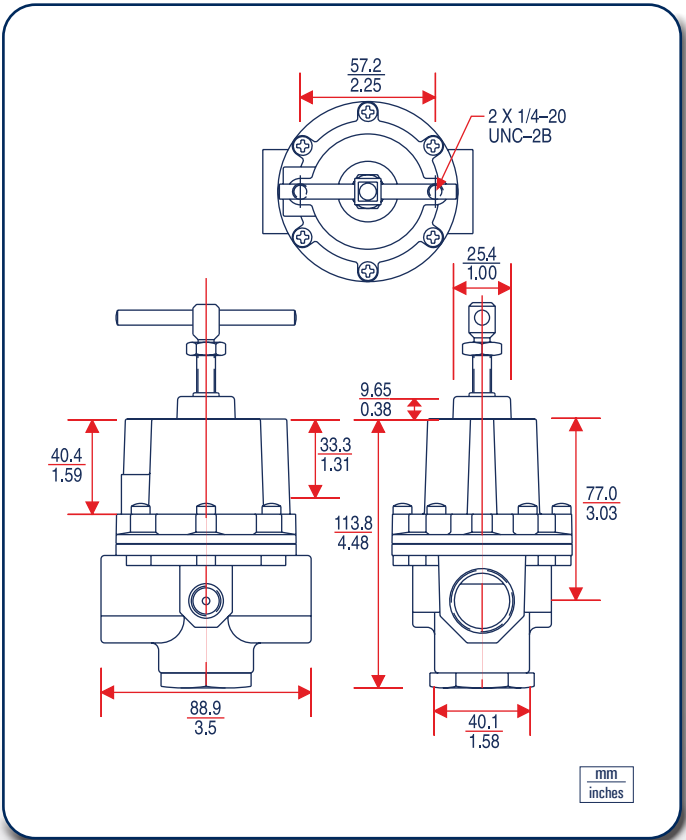
Supply Pressure 100 PSIG — 3/4 NPT



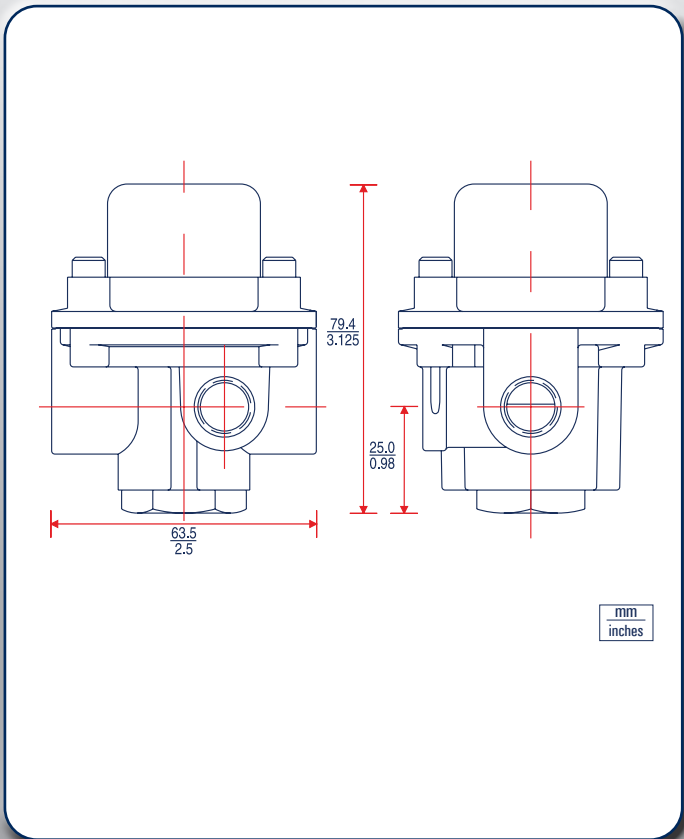
P32 Dimensions



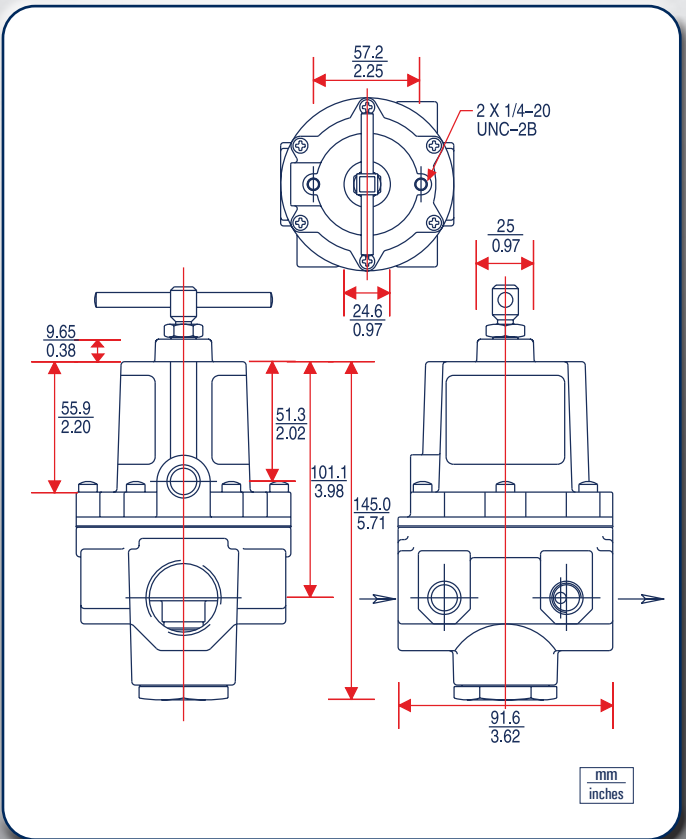
P37 Dimensions



P36 Dimensions



P38 Dimensions



BelGAS

A Division of the Marsh Bellofram Group of Companies

8019 Ohio River Blvd.
Newell, WV 26050
(304) 387-1200 | www.belgas.net



BelGAS Website

With decades of proven market experience, the BelGAS division of Marsh Bellofram is a global leader in the design and manufacturing of high pressure regulators, low pressure regulators, and other flow control products. Scan the QR or visit our website at <https://bit.ly/BelGAS>



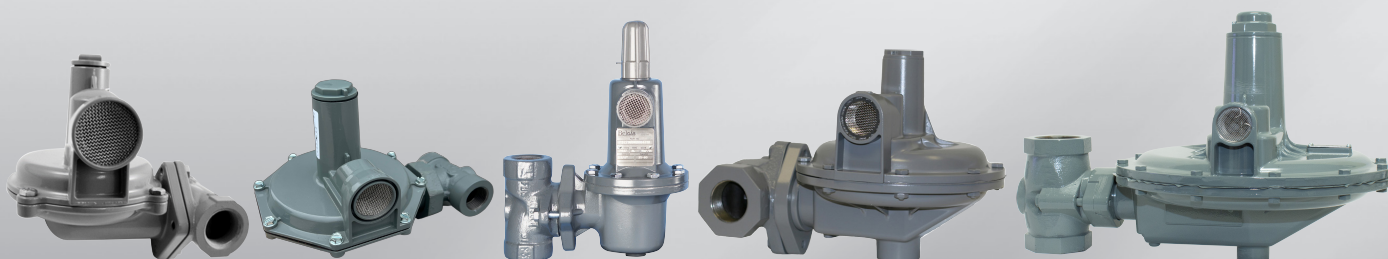
BelGAS Regulator Sizing Wizard

Need help finding the right regulator for your application? Check out the BelGAS Regulator Sizing Wizard - an interactive online tool that makes it easier than ever to precisely match a regulator with your specifications. Scan the QR code or visit our website at <https://bit.ly/BelGAS-Wizard>



BelGAS Videos

Interested in learning more about what BelGAS has to offer? Visit our YouTube channel and check out the BelGAS playlist for How-Tos, product overviews, and more! Scan the QR code or watch the videos on our YouTube channel at <https://bit.ly/BelGAS-YouTube-List>



The contents of this publication are presented for informational purposes only. Although we have made reasonable efforts to give information that we believe is up-to-date and accurate, we make no representations or warranties regarding its adequacy, accuracy, completeness, or correctness. We do not warrant or represent that the information is complete in every respect. Our terms and conditions, which are available upon request, govern all sales. We reserve the right to modify or improve the designs and specifications of our products, and the information contained in this document is subject to change without notice.

We reserve the right to modify or improve the designs or specifications of our products and the information contained in this document is subject to change without notice. The user is solely responsible for making the final selection of the product and assuring that all installation, performance, endurance, maintenance, safety, and warning requirements of the product are met. Final product recommendations should be verified by a gas professional.

BelGAS does not assume responsibility for its products' selection, use, or maintenance. Neither BelGAS nor its suppliers shall be liable for any loss or damage to the user or third parties caused by the product, the confidential information of BelGAS, or BelGAS's performance of these terms.