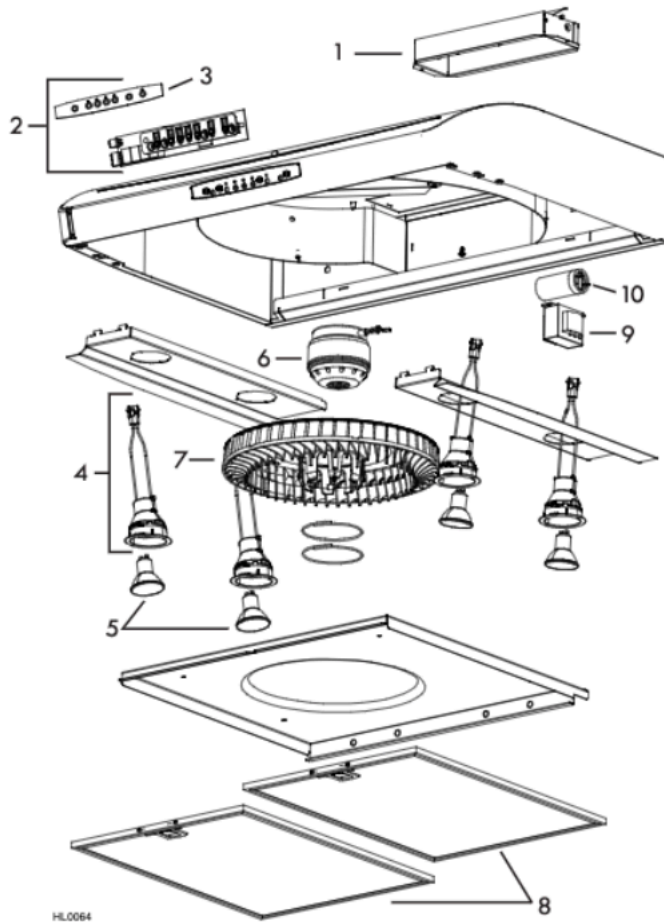


SERVICE PARTS



REPLACEMENT PARTS AND REPAIRS

In order to ensure your unit remains in good working condition, you must use the manufacturer genuine replacement parts only. The manufacturer genuine replacement parts are specially designed for each unit and are manufactured to comply with all the applicable certification standards and maintain a high standard of safety. Any third party replacement part used may cause serious damage and drastically reduce the performance level of your unit, which will result in premature failing. The manufacturer recommends to contact a certified service depot for all replacement parts and repairs.

Order replacement parts by PART NO., not by KEY NO.

KEY NO.	PART NO.	DESCRIPTION	30" WIDTH	36" WIDTH
1	SV13296	Adapter/Damper	1	1
2	SV16571	Electronic Control Module, Black (including Overlay, item 3)	1	1
	SV16572	Electronic Control Module, White (including Overlay, item 3)	1	1
3	SV07322	Overlay Black	1	1
	SV07323	Overlay White	1	1
4	SV16569	Lamp Shell, Socket & Trim Ass'y	4	4
5	SV05921	Halogen Lamp (50 W, 120 V, PAR 16, GU-10)	4	4
6	SV01766E	Motor (including Wheel, item 7)	1	1
7	SV06111	Wheel	1	1
8	SV07332	Filters with latch, square pressed, 9.92" x 17.98" x 0.35"	2	1
	SV07333	Filters with latch, square pressed, 12.92" x 17.98" x 0.35"	1	2
9	SV07325	Transformer	1	1
10	SV02160	Capacitor	1	1
*	SV09428	Kenmore Elite Logo	1	1
*	SV07326	Harness	1	1
*	SV07328	Kenmore Elite Installation Manual	1	1
*	SV06751	Installation Bag: 1 Wire Clamp LP16-AP, 2 Wire Connectors no. 74B, 5 no. 8 x 1/2" Screws, 3 no. 6 x 1/2" Screws	1	1

*Not illustrated.