

4 3 2 1

GENERAL INFORMATION:

SHAFT RUNOUT: .001 [.03] T.I.R. PER INCH LENGTH OF EXTENSION

BEARINGS: BALL

MOUNTING POSITION: VERTICAL SHAFT UP

ELECTRICAL DATA:

OVERLOAD PROTECTOR: AUTOMATIC RESET (SENSATA 7AM 304)

LEADS: NO. 18 GA., .03 [.8] THK. XLP 125°C INSUL.

NAMEPLATE DATA:

MODEL NO.: F48Z99A01
CUST. P/N: FC1106F
HP: 1
ROT.: REVERSIBLE
RPM: 1075
TYPE: UAF
FRAME: 48Y
VOLTS: 200-230/460
PH: 1
AMPS: 6.4/3.2
HZ: 60
INS.: F
AMB.: 70° C
DUTY: AIR OVER
CAP.: 25 MFD/370 V
ENCL: OPEN
UL LOGO
CSA LOGO
THERMALLY PROTECTED TYPE T

EXTERNAL CONNECTION DIAGRAM

HIGH VOLTS

LOW VOLTS

SHOWN FOR CCWLE ROT.
FOR CWLE ROT. INTERCHANGE
NO. 6 AND NO. 7 LEADS

614131-060

PERFORMANCE CURVE NO. C16535

TORQUE @ 1075 RPM (25°C) 97.1 OZ. FT.

APPROVED SAMPLE 0701428B

UL COMPONENT FILE # E46412

CCN # PRGY2

CSA FILE # LR43341

CLASS # 4211-01

REV. ROT.

Ø5.70 [Ø144.8] MAX.

#10-32 GREEN GROUND SCREW BINDING HEAD

CONN. DIAG. (ADHESIVE)

3.13 [79.4]

Ø6.57 [Ø166.8]

4.78 [121.5]

Ø7.50 [Ø190.5]

2X .44 [11.0]

TOP OF NAMEPLATE (ADHESIVE)

15.00 [381.1]

9.56 [242.9]

5.44 [138.2]

3.75 [95.3]

(3.00) [(76.2)]

(2.81) [(71.4)]

TOP OF STICKER WARNING (ADHESIVE)

TOP OF STICKER HEATMASTER (ADHESIVE)

SLINGER

4.63 [117.6] KEYWAY

4.00 [101.6] USABLE FLAT

4.07 [103.4]

.6250^{+.0000}_{-.0004}

15.875^{+.000}_{-.010}

.59 [15.1]

2.31 [58.7]

.187 [4.75] X .187 [4.75] X 1.375 [34.93] KEY TAPED TO MAIN FRAME

.187±.001 [4.75±.03]

.509±.007 [12.94±.18]

.565±.005 [14.35±.13] FLAT

REGAL-BELOIT CORPORATION (RBC) PROVIDES TECHNICAL ASSISTANCE TO OUR CUSTOMERS IN SEVERAL AREAS. SINCE RBC DOES NOT RECEIVE ALL DATA CONCERNING THE USE AND APPLICATION OF THE MOTOR, THE SUITABILITY OF THE MOTOR FOR THE APPLICATION MUST BE DETERMINED BY THE CUSTOMER.

DIMENSIONS WITHOUT TOLERANCES ARE FOR REFERENCE ONLY.

MAIN FRAME - OLE OPEN

END FRAME - OLE OPEN

MAIN FRAME - LE OPEN

END FRAME - LE OPEN

CUSTOMER DISTRIBUTION SERVICE

ENCLOSURE

REGAL Regal Beloit America, Inc.

MODEL-RFHP-48FR OUTLINE

FC1106F

1

DRAWING REVISION D ECO-0113485 REMOVED CHINESE AND SPANISH LAYERS

REVISION BY C.ZHOU APPROVED BY D.LI

DATE 12-08-2016

DATE 12-08-2016

ECO DESCRIPTION

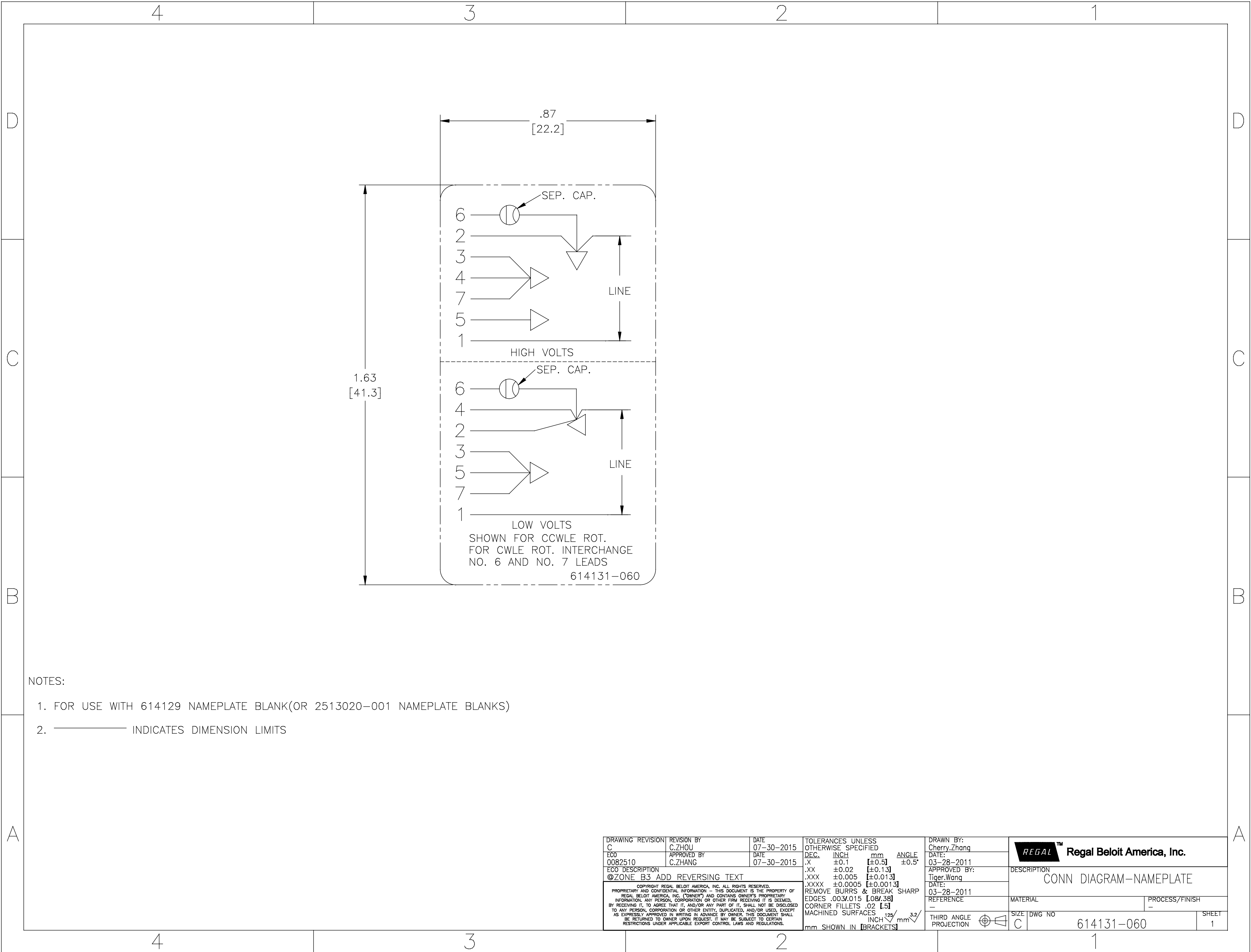
COPYRIGHT REGAL-BELOIT AMERICA, INC. ALL RIGHTS RESERVED. PROPRIETARY AND CONFIDENTIAL INFORMATION - THIS DOCUMENT IS THE PROPERTY OF REGAL-BELOIT AMERICA, INC. ("OWNER") AND CONTAINS OWNER'S PROPRIETARY INFORMATION. ANY PERSON, CORPORATION OR OTHER FIRM RECEIVING IT IS DEEMED, BY RECEIVING IT, TO AGREE THAT IT, AND/OR ANY PART OF IT, SHALL NOT BE DISCLOSED TO ANY PERSON, CORPORATION OR OTHER ENTITY, DUPLICATED, AND/OR USED, EXCEPT AS EXPRESSLY APPROVED IN WRITING IN ADVANCE BY OWNER. THIS DOCUMENT SHALL BE RETURNED TO OWNER UPON REQUEST. IT MAY BE SUBJECT TO CERTAIN RESTRICTIONS UNDER APPLICABLE EXPORT CONTROL LAWS AND REGULATIONS.

THIRD ANGLE PROJECTION

SIZE C

DWG NO FC1106F

SHEET 1



- NOTES:
1. FOR USE WITH 614129 NAMEPLATE BLANK(OR 2513020-001 NAMEPLATE BLANKS)
 2. ——— INDICATES DIMENSION LIMITS

DRAWING REVISION ECO 0082510 ECO DESCRIPTION @ZONE B3 ADD REVERSING TEXT	REVISION BY C.ZHOU APPROVED BY C.ZHANG	DATE 07-30-2015 DATE 07-30-2015	TOLERANCES UNLESS OTHERWISE SPECIFIED DEC. INCH mm ANGLE .X ±0.1 [±0.5] ±0.5° .XX ±0.02 [±0.13] .XXX ±0.005 [±0.013] .XXXX ±0.0005 [±0.0013] REMOVE BURRS & BREAK SHARP EDGES .003/.015 [0.08/.38] CORNER FILETS .02 [0.5] MACHINED SURFACES INCH 125 / mm 3.2 mm SHOWN IN [BRACKETS]	DRAWN BY: Cherry.Zhang DATE: 03-28-2011 APPROVED BY: Tiger.Wang DATE: 03-28-2011 REFERENCE — THIRD ANGLE PROJECTION	<div><div>REGAL™</div><div>Regal Beloit America, Inc.</div></div> <div>DESCRIPTION CONN DIAGRAM-NAMEPLATE</div> <table><tr><td>MATERIAL —</td><td>PROCESS/FINISH —</td></tr><tr><td>SIZE DWG NO C 614131-060</td><td>SHEET 1</td></tr></table>	MATERIAL —	PROCESS/FINISH —	SIZE DWG NO C 614131-060	SHEET 1
MATERIAL —	PROCESS/FINISH —								
SIZE DWG NO C 614131-060	SHEET 1								