

# PRODUCT INFORMATION PACKET



Model No: 9608  
Catalog No: 9608

OEM Replacement Motor, 1/20, 1/75, 1/120 HP, 1 Ph, 60 Hz, 115 V, 1100 RPM, 3 Speed, 42 Frame, OAO



Regal and Century are trademarks of Regal Rexnord Corporation or one of its affiliated companies.  
©2023 Regal Rexnord Corporation, All Rights Reserved. MC017097E





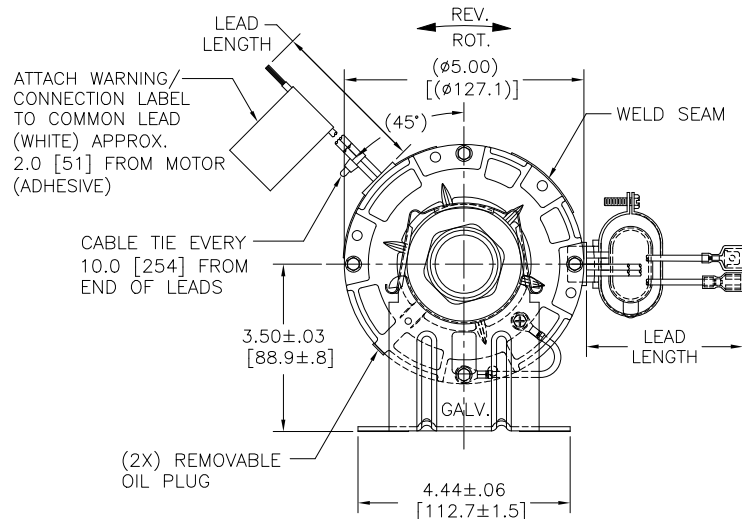
### Nameplate Specifications

Phase	1	Output HP	1/20, 1/75, 1/120 Hp
Output KW	0.04 kW	Voltage	115 V
Speed	1100 rpm	Service Factor	1
Frame	42	Enclosure	Open Air Over
Thermal Protection	Thermally Protected	Ambient Temperature	40 °C
Frequency	60 Hz	Current	.60 A
Duty	Continuous Air Over	Insulation Class	B
UL	Recognized	CSA	Y
CE	N	Number of Speeds	3

### Technical Specifications

Electrical Type	Permanent Split Capacitor	Starting Method	Across The Line
Poles	6	Rotation	Reversible
Mounting	Resilient Base	Motor Orientation	Horizontal
Drive End Bearing	Sleeve	Opp Drive End Bearing	Sleeve
Frame Material	Rolled Steel	Shaft Type	Flat
Overall Length	13.56 in	Frame Length	2.67 in
Shaft Diameter	0.500 in	Shaft Extension	9 7/8 in
Outline Drawing	9608-S01		

This is an uncontrolled document once printed or downloaded and is subject to change without notice. Date Created:06/07/2023

**GENERAL INFORMATION:**

SHAFT RUNOUT: .001 [.025] T.I.R. PER INCH LENGTH OF EXTENSION

END PLAY: .005 TO .040 [.13 TO 1.02]

BEARINGS: SLEEVE

MOUNTING POSITION: HORIZONTAL

**ELECTRICAL DATA:**

OVERLOAD PROTECTOR: AUTOMATIC RESET (SESATA 7AM 093)

LEADS: NO. 18 GA., .06 [1.5] THK. XLP 125°C INSUL.

GROUND LEAD: NO. 16 GA., .03 [.8] THK. (GREEN/YELLOW INSUL.)

**NAMEPLATE DATA:**

**Century**  
UNIVERSAL ELECTRIC MOTOR

ELECTRICAL PRODUCTS COMPANY TIPP CITY, OHIO

MOD DE3D462N' STK. NO. 9608

SER. DATE & PO# PLT LTR

VOLTS 115 HZ 60 AMPS .60

RPM 1100 SP 3 PH 1 CAP 5 MFD/370 VAC

INS CL B AMB 40 °C HP 1/20, 1/75, 1/20 CONT AO

BRG SLV

ASSEMBLED IN MEXICO

PERFORMANCE CURVE NO.	TORQUE @ 1100 RPM (25°C)	APPROVED SAMPLE	UL COMPONENT		CSA	
			FILE #	CCN #	FILE #	CLASS #
-	32 OZ. IN.	S-2869F	-	-	-	-

63T7452-18

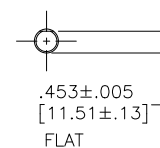
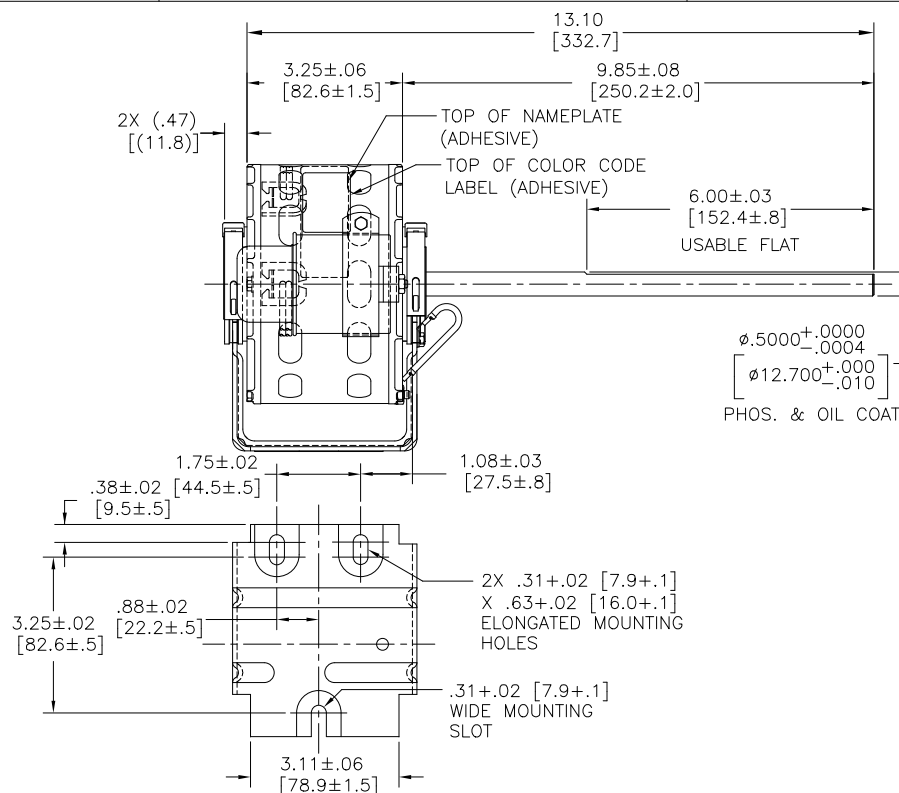
COLOR CODE LABEL

BK-HI 0.60A 1/20HP

BU-MED 0.30A 1/75HP

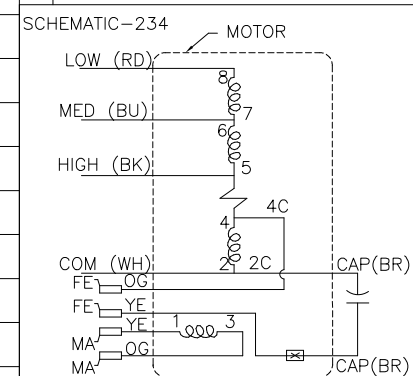
RED-LO 0.23A 1/120HP

WH-COM BR & BR CAP



GREEN/YELLOW (GROUND)	CONNECTED TO BASE	#10 EYELET
BROWN	CONNECTED TO CAPACITOR	.25 [6.4] FLAG
BROWN	CONNECTED TO CAPACITOR	.25 [6.4] FLAG
ORANGE	5.0/7.0 [127/179]	.25 [6.4] MALE INSUL. TAB
YELLOW	5.0/7.0 [127/179]	.25 [6.4] MALE INSUL. TAB
ORANGE	5.0/7.0 [127/179]	.25 [6.4] FEMALE INSUL. SPADE
YELLOW	5.0/7.0 [127/179]	.25 [6.4] FEMALE INSUL. SPADE
RED	43.0/45.0 [1092/1143]	.50 [12.7] SKIN
BLUE	43.0/45.0 [1092/1143]	.50 [12.7] SKIN
BLACK	43.0/45.0 [1092/1143]	.50 [12.7] SKIN
WHITE	43.0/45.0 [1092/1143]	.50 [12.7] SKIN
COLOR	LENGTH	TERMINAL OR STRIP LENGTH

MAIN FRAME - OLE	OPEN
END FRAME - OLE	OPEN
MAIN FRAME - LE	OPEN
END FRAME - LE	OPEN
ENCLOSURE	

**LEAD DATA**

DRAWING REVISION	REVISION BY	DATE
E	J. RUPERT	05-01-2023
ECO	APPROVED BY	DATE
ECR-0225042	J. RUPERT	05-01-2023
ECO DESCRIPTION		
UPDATED TITLE BLOCK		
COPYRIGHT REGAL BELLOIT AMERICA, INC. ALL RIGHTS RESERVED. PROPRIETARY AND CONFIDENTIAL INFORMATION - THIS DOCUMENT IS THE PROPERTY OF REGAL BELLOIT AMERICA, INC. (OWNER) AND CONTAINS OWNER'S PROPRIETARY INFORMATION. ANY PERSON, CORPORATION OR OTHER FIRM RECEIVING IT IS DEMAND, BY RECEIVING IT, TO AGREE THAT IT, AND/OR ANY PART OF IT, SHALL NOT BE DISCLOSED TO ANY PERSON, CORPORATION OR OTHER ENTITY, DUPLICATED, AND/OR USED, AS EXPRESSLY APPROVED IN WRITING IN ADVANCE BY OWNER. THIS DOCUMENT SHALL BE RETURNED TO OWNER UPON REQUEST. IT MAY BE SUBJECT TO CERTAIN RESTRICTIONS UNDER APPLICABLE EXPORT CONTROL LAWS AND REGULATIONS.		

DRAWN BY:	AS
DATE:	06-22-2011
APPROVED BY:	BS
DATE:	06-22-2011
REFERENCE	-
THIRD ANGLE PROJECTION	

<b>REGAL</b> Regal Beloit America, Inc.	
DESCRIPTION	
MODEL-RFHP-42FR	
OUTLINE	
MATERIAL	PROCESS/FINISH
-	-
SIZE	DWG NO
C	9608
SHEET	1