

PRODUCT INFORMATION PACKET



Model No: 9715

Catalog No: 9715

Fan and Blower Motor, 1/6 HP, 1 Ph, 60 Hz, 115 V, 1075 RPM, 3 Speed, 42 Frame, OAO



Regal and Century are trademarks of Regal Rexnord Corporation or one of its affiliated companies.

©2023 Regal Rexnord Corporation, All Rights Reserved. MC017097E





Nameplate Specifications

Phase	1	Output HP	1/6 Hp
Output KW	0.13 kW	Voltage	115 V
Speed	1075 rpm	Service Factor	1
Frame	42Y	Enclosure	Open Air Over
Thermal Protection	Automatic	Ambient Temperature	40 °C
Frequency	60 Hz	Current	3.1 A
Duty	Air Over	Insulation Class	B
UL	Recognized	CSA	Y
CE	N	Number of Speeds	3

Technical Specifications

Electrical Type	Permanent Split Capacitor	Starting Method	Across The Line
Poles	6	Rotation	Reversible
Mounting	Resilient Rings	Motor Orientation	Horizontal
Drive End Bearing	Sleeve	Opp Drive End Bearing	Sleeve
Frame Material	Rolled Steel	Shaft Type	Flat
Overall Length	11.53 in	Frame Length	4.17 in
Shaft Diameter	0.500 in	Shaft Extension	5.8 in
Outline Drawing	DE3H7035-S01		

This is an uncontrolled document once printed or downloaded and is subject to change without notice. Date Created:11/07/2023

D

C

B

A

D

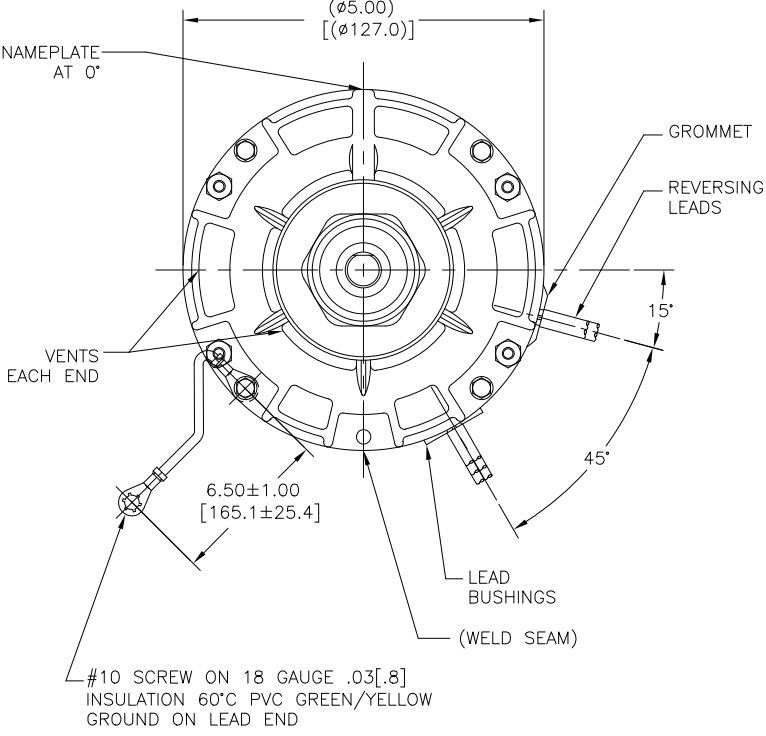
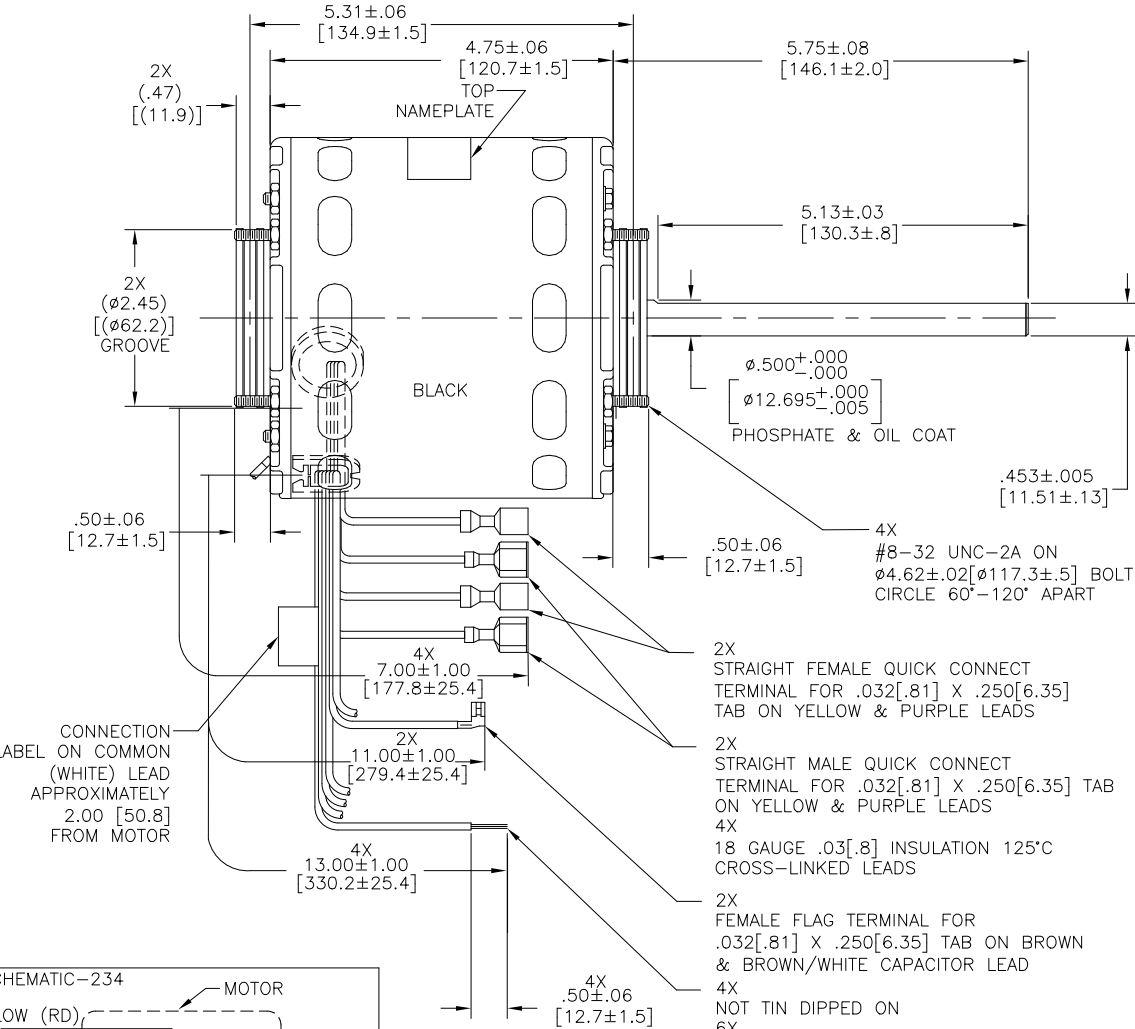
C

B

A

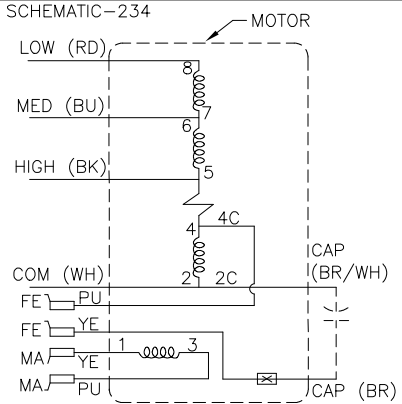
CUSTOMER IS SOLELY RESPONSIBLE FOR MOTOR PERFORMANCE AND SUITABILITY IN APPLICATIONS FOR CUSTOMER'S USES.

END PLAY .005[.13] MINIMUM $-.040[1.02]$ MAXIMUM
MAXIMUM SHAFT RUN OUT .001[.03] PER INCH
MAXIMUM RUN OUT NOT TO EXCEED .010[.25]



NOTE:
1. DISTRIBUTION PART NUMBER: 9715
GRAINGER PART NUMBER: 4UY19

SEE NOTE #1



CONNECTION LABEL
63T7433-305

CCWLE	PLUG IN YELLOW LEAD TO PURPLE LEAD
CWLE	PLUG IN PURPLE LEAD TO PURPLE LEAD

ELECTRICALLY PER
SAMPLE 0444420C
PERFORMANCE CURVE
NO. C32440

ROT: REVERSIBLE
NAMEPLATE DATA:
 Tipp City, OH
THERMALLY PROTECTED
SER. DATE & PO# PLT LTR MOD DE3H035N'
VOLTS 115 RPM 1075 SP PH1 CAP5 MFD/370 VAC
INS CL B AMB 40°C HP CONT A.O. ← ROT REV →
BRG SLV ASSEMBLED IN MEXICO

DRAWING REVISION ECO ECR-0226700 ECO DESCRIPTION UPDATED LEAD EXIT POSITION PER ECR	REVISION BY ADHI APPROVED BY KEP	DATE 10-29-2023 10-29-2023	DRAWN BY: JRUPER DATE: 12-02-2004 APPROVED BY: JRUPER DATE: 12-02-2004 REFERENCE	THIRD ANGLE PROJECTION	SIZE DWG NO C DE3H7035	DESCRIPTION MODEL-RFHP-42FR OUTLINE	PROCESS/FINISH	SHEET 1
---	---	----------------------------------	--	---------------------------	------------------------------	---	----------------	------------

PROPRIETARY AND CONFIDENTIAL INFORMATION - THIS DOCUMENT IS THE PROPERTY OF REGAL BELLOIT AMERICA, INC. ("REGAL") AND CONTAINS REGAL'S PROPRIETARY INFORMATION. ANY PERSON, CORPORATION OR OTHER FIRM RECEIVING IT IS DEEMED, BY RECEIVING IT, TO AGREE THAT IT, AND/OR ANY PART OF IT, SHALL NOT BE DISCLOSED TO ANY PERSON, CORPORATION OR OTHER ENTITY, DUPLICATED, AND/OR USED, EXCEPT AS EXPRESSLY APPROVED IN WRITING IN ADVANCE BY REGAL. THIS DOCUMENT SHALL BE RETURNED TO OWNER UPON REQUEST. IT MAY BE SUBJECT TO CERTAIN RESTRICTIONS UNDER APPLICABLE EXPORT CONTROL LAWS AND REGULATIONS.