

# PRODUCT INFORMATION PACKET



Model No: DBL4500V1A  
Catalog No: DBL4500V1A

Fan Coil & Air Conditioner Motor, 1/10 HP, 1 Ph, 60 Hz, 115 V, 1625 RPM, 3 Speed, 42 Frame, OPEN



Regal and Century are trademarks of Regal Rexnord Corporation or one of its affiliated companies.  
©2024 Regal Rexnord Corporation, All Rights Reserved. MC017097E





### Nameplate Specifications

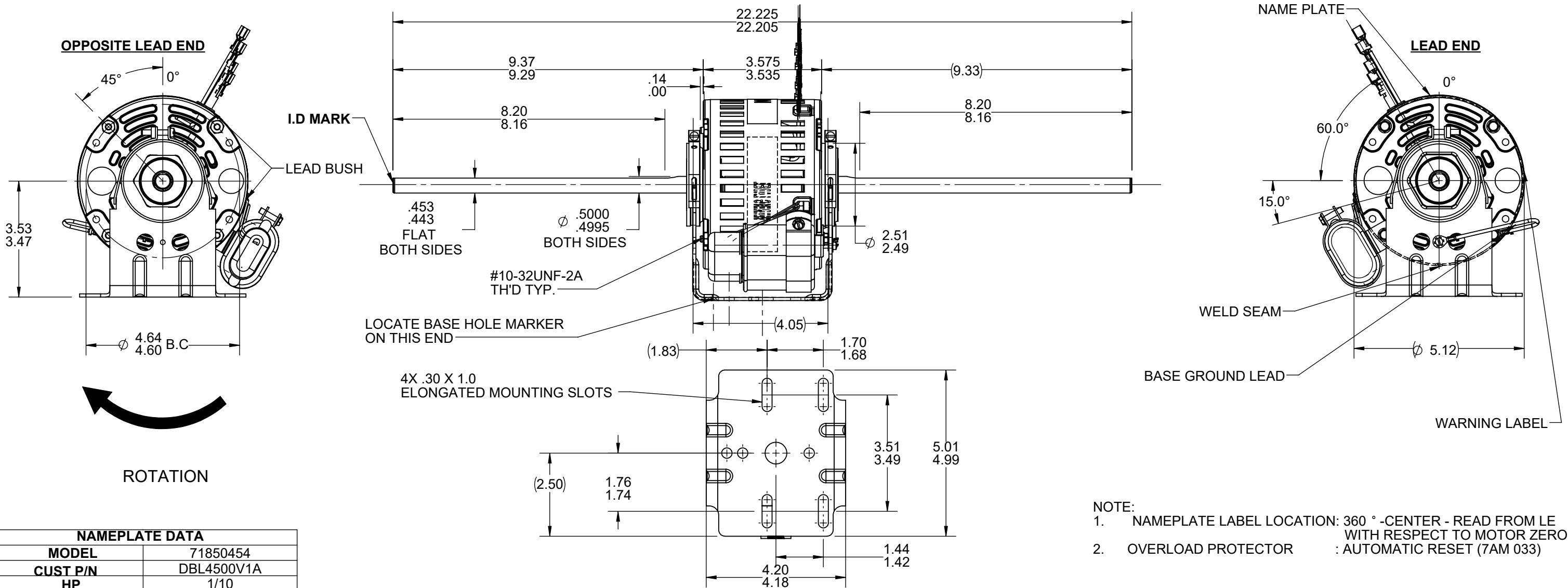
Phase	1	Output HP	1/10 Hp
Voltage	115 V	Speed	1625 rpm
Service Factor	1.0	Frame	42
Enclosure	Open Enclosed	Thermal Protection	Automatic
Ambient Temperature	40 °C	Frequency	60 Hz
Current	1.4 A	Duty	Air Over
Insulation Class	B	UL	Recognized
CSA	Y	CE	N
Number of Speeds	3		

### Technical Specifications

Electrical Type	Permanent Split Capacitor	Starting Method	Across The Line
Poles	4	Rotation	Counterclockwise Lead End
Mounting	Resilient Base	Drive End Bearing	Ball
Opp Drive End Bearing	Ball	Frame Material	Rolled Steel
Shaft Type	Flat	Frame Length	3.58 in
Shaft Diameter	0.500 in	Shaft Extension	9.33X.5X9.33 in
Outline Drawing	71850454R		

This is an uncontrolled document once printed or downloaded and is subject to change without notice. Date Created:07/03/2024

4		3				2				1	
S.NO	CONNECTION	COLOR	EXIT TYPE	EXIT LOC (VIEWING LE)	GAGE	MATERIAL	WALL THK.	LENGTH (±1.50)	TERMINATION	VENTILATION SYSTEM	
1	COMMON LEAD	WHITE	LEAD BUSH	11:00	18	XLPE	2/64	40.0	.25 SQC UNINSULATED	SHELL VENTS	OPEN
2	CAPACITOR LEAD	BROWN	CONNECTED TO CAPACITOR	8:30	18	XLPE	2/64	N/R	0.25 FQC	ENDSHIELD(OPP.LEAD END)	OPEN
3	CAPACITOR LEAD	BROWN	CONNECTED TO CAPACITOR	8:30	18	XLPE	2/64	N/R	0.25 FQC	ENDSHIELD(LEAD END)	OPEN
4	HIGH SPEED LEAD	BLACK	LEAD BUSH	11:00	18	XLPE	2/64	40.0	.25 SQC UNINSULATED		
5	MEDIUM SPEED LEAD	BLUE	LEAD BUSH	11:00	18	XLPE	2/64	40.0	.25 SQC UNINSULATED		
6	LOW SPEED LEAD	RED	LEAD BUSH	11:00	18	XLPE	2/64	40.0	.25 SQC UNINSULATED		
7	BASE GROUND LEAD	GREEN	CLAMP SCREW	4:30	18	THERMOPLASTIC	2/64	5.0	# 8 SERR EYELET		



NAMEPLATE DATA	
MODEL	71850454
CUST P/N	DBL4500V1A
HP	1/10
RPM	1625 (3 SPD)
VOLTS	115
HZ	60
SPEEDS	3
AMPS	1.40
CAP REQ'D-1	5 MFD/370 VOLTS
CAP REQ'D-2	N/R
CONN.DRW	NP24X327278
ROTATION	CCWLE

DRAWING REVISION C	REVISION BY KN	REV DATE/© DATE 05/08/2024
REQUEST NUMBER ECR-0233788	APPROVED BY MURALIDHAR	DATE 05/08/2024
REQUEST NUMBER DESCRIPTION REMOVED SUFFIX R FROM NP DATA AS PER ECR		
COPYRIGHT (PER REVISION DATE) REGAL BELOIT AMERICA, INC. ALL RIGHTS RESERVED. PROPRIETARY AND CONFIDENTIAL INFORMATION - THIS DOCUMENT IS THE PROPERTY OF REGAL BELOIT AMERICA, INC. ("OWNER") AND CONTAINS OWNER'S PROPRIETARY INFORMATION. ANY PERSON, CORPORATION OR OTHER FIRM RECEIVING IT IS DEEMED, BY RECEIVING IT, TO AGREE THAT IT, AND/OR ANY PART OF IT, SHALL NOT BE DISCLOSED TO ANY PERSON, CORPORATION OR OTHER ENTITY, DUPLICATED, AND/OR USED, EXCEPT AS EXPRESSLY APPROVED IN WRITING IN ADVANCE BY OWNER. THIS DOCUMENT SHALL BE RETURNED TO OWNER UPON REQUEST. IT MAY BE SUBJECT TO CERTAIN RESTRICTIONS UNDER APPLICABLE EXPORT CONTROL LAWS AND REGULATIONS.		

PRIMARY DIMENSIONS ARE INCH  
mm DIMENSIONS IN [BRACKETS]  
ARE FOR REFERENCE ONLY

- NOTE:
- NAMEPLATE LABEL LOCATION: 360 ° -CENTER - READ FROM LE WITH RESPECT TO MOTOR ZERO.
  - OVERLOAD PROTECTOR : AUTOMATIC RESET (7AM 033)

DRAWN BY Muralidar	 Regal Beloit America, Inc.	
DATE 4/24/2023		
APPROVED BY RS	DESCRIPTION <b>OUTLINE</b>	
DATE 4/25/2023	CUSTOMER NAME: DISTRIBUTION SERVICES	
REFERENCE	MATERIAL	PROCESS/FINISH
THIRD ANGLE PROJECTION 	SIZE B	DRAWING NUMBER <b>71850454R</b>
		SHEET 1 OF 1

Winding and Test Specification

WTS # 82850454-1										
Revision # 2					Rev. Date : Apr 24, 2023		First Made for : 71850454			
WTS Nameplate Data										
Horsepower	1/10	RPM	1625 (3 SPD)							
Voltage	115	Amps	1.40							
Frequency	60	Phases	1							
Capacitor	5.0 µfd	Cap Volts	370							
Test Volts : 115		Low Spd St Volts : 75								
Test Frequency : 60										
Test Instructions : 24A105040AA-P1										
Winding				Resistance						
				Min	Nominal	Max				
Main *				11.71	12.33	12.95				
X Main				5.45	5.73	6.02				
Y Main				10.83	11.40	11.97				
Z Main										
W Main										
Start				55.11	58.01	60.91				
N. L. Performance Data					Full Load Performance					
Amps		Watts		Cap. Volts	Amps		Watts		Speed	Torque
Nominal	Nominal	Max	Nominal		Max	Nominal	Min	Nominal		
High	0.68	55	66	264	1.44	1.58	153	161	1620	5.5 6.1
Med. High										
Medium	0.49	43	52		1.02	1.12	110	116	1620	3.8 4.2
Med. Low										
Low	0.36	34	41		0.71	0.78	77	81	1620	2.5 2.8
Max. Torque				Locked Rotor						
RPM		Torque		Amps	Watts	Torque				
		Min	Nominal	Nominal	Nominal	Nominal				
High	1294	8.0	8.9	3.48	348	2.4				
Med. High					249	1.8				
Medium		5.6	6.2							
Med. Low					171	1.2				
Low		3.7	4.1							
Customer/Special Load Points										
Speed		Torque		Watts		Amps				
Nominal		Min	Nominal	Nominal	Max	Nominal	Max			
High	1625	5.7	6.0	150	158	1.41	1.55			
Med. High										
Medium	1625	3.9	4.1	108	113	1.01	1.11			
Med. Low										
Low	1625	2.6	2.7	76	80	0.70	0.77			

\* Large wire size may be double stranded.

Regal Beloit Confidential Information



## Motor Details

**Model :** 71850454R

**Catalog Number :**

### General:

Application : N/R  
Phases : 1  
# of Speeds : 3  
Testspec : 82850454-1  
Horiz/Vertical : HOR  
Shell Enclosure : OPEN  
Endshield Enclosure : OPEN

Motor Category : COMPLETE MOTOR  
Production Status : PROD

Stock Status :  
Approved For Sale :  
Restricted Model :  
Customer : DISTRIBUTION SERVICE  
Customer Part# : DBL4500V1A

### Nameplate Data:

Horsepower : 1/10  
RPM : 1625 (3 SPD)  
Voltage : 115  
FL Amps : 1.40  
Capacitor 1mFd/V : 5.00/370  
Additional Information : N/R  
: N/R

GE Type : KCP  
Time Rating : AO  
Frequency : 60  
Insulation Class: B  
Capacitor 2mFd/V : N/R

### Miscellaneous:

Fullload RPM - HI : 1620  
Poles : 4  
Rotation : CCW  
Thermal Protection :  
Finish Color: BLACK

GE Frame : 29  
Shell Length : 3.125  
Drains : N  
Est. Weight : 8  
Capacitor By : RBC

### OVERLOAD INFORMATION::

Protector: 24A100514P7  
Catalog No: 7AM033A54818C

Overload Temp : 135/125  
Vendor Name: TEXAS INSTRUMENTS

### THERMAL CUT-OFF INFORMATION:

TCO: N/A  
Catalog No: N/A

Overload Temp : N/A  
Vendor Name: N/A

### U.L.CONSTRUCTION FILES:

Motor Construction: E46035(excluding SME)  
Over Load : E27885(excluding SME)

Class B Insulation : E306343(excluding SME)  
CSA(REY) : MC236833(excluding SME)

### Shaft:

PE Type : FLAT  
PE Length : 9.33  
PE Diameter : .5  
PE Flat Length : 8.18

OPE Type : FLAT  
OPE Length : 9.33  
OPE Diameter : .5  
OPE Flat Length : 8.18

### Endshields:

PE Material : AL  
PE Hub Type : STD  
PE Oiler : N/R  
PE Oil Plug : N/R  
PE Mounting Holes : N/R

OPE Material : AL  
OPE Hub Type : STD  
OPE Oiler : N/R  
OPE Oil Plug : N/R  
OPE Mounting Holes : N/R

### Bearings:

PE Bearing Type : BALL  
Bearing Protection : No

OPE Bearing Type : BALL  
Rohs Compliant : No

### Mounting:

Base : RB  
Clamp Screw : Yes

Lug : N/R  
Weld Screw : No

### Base:

Type : STD 29  
Reversed : N

Height : 3.5  
Assembly Angle : 180 degrees CW from Oil boss viewed from OPE of the motor.

### Extended Clamp Screws:

PE Pattern :  
PE Length : 0.09  
PE Nut Qty : 1  
Head End : OPE  
Nut Thickness : .12

OPE Pattern :  
OPE Length : 0.00  
OPE Nut Qty : 0  
Screw Size : #10

### Lead & Cord :

Lead End : OPE  
Lead Exit H/W : NYLON GROMMET  
Lead Exit H/W Orient. : N/R  
:

Lead Type : SINGLE COND  
Lead Harness Desc : N/R

Conductor ID : COMM-FIXED LINE  
Exit : 11:00 - NYLON GROMMET  
Color : WHITE  
Termination : .25 SQC  
Conductor ID : CAPACITOR

Length : 40  
Mat'l Spec : 18 2/64 XLPE  
Slot ID : N/A

Exit :	<b>8:30 - NYLON GROMMET</b>	Length :	<b>0</b>
Color :	<b>BROWN</b>	Mat'l Spec :	<b>18 2/64 XLPE</b>
Termination :	<b>.25 FQC</b>	Slot ID :	<b>N/A</b>

**Note :** Exit position is viewed from the Lead End with the Shell Weld at 6:00.

**Grounding :**

Type :	<b>LEAD</b>	Location :	<b>4:30</b> viewed from <b>PE</b> with Oil boss at 12:00
Exit Type :	<b>CLAMPSCREW</b>	AWG Size :	<b>18</b>
Length :	<b>5.00</b>	Color :	<b>GRN-YEL</b>
Terminal :	<b>#8 SER RING TERMINAL</b>	Ins.Material & Thickness	<b>2/64 THROMOPLAST</b>

**Diagrams and Dimensions :**

Outline Drawing :	<b>71850454R</b>	C-Dimension :	<b>22.21</b>
Connection Diagram :	<b>24B200217 Fig# 21</b>	Connection Label :	<b>NP24X327278</b>

**Notes :**

**This document is the property of the Regal Beloit Company containing proprietary and confidential information.**  
Date of last revision : **27-NOV-23**

