



# CVS-1 SHUTTLE VALVE

## Features

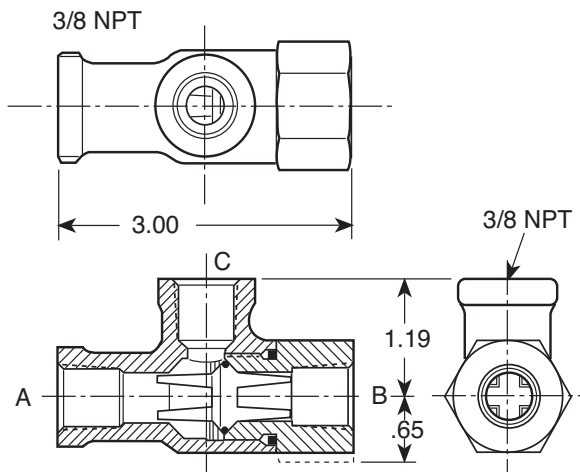
- No Lubrication
- Corrosion Resistant
- One Moving Part
- Replaceable Teflon Coated Seal
- Fast Acting
- Simplified design - low maintenance
- Non-Sticking
- Drip tight sealing
- Easy Maintenance

## DESCRIPTION

The Cla-Val Model CVS-1 Shuttle Valve is precision engineered for lasting dependable service. The CVS-1 combines instantaneous action with one moving part designed for smooth positive operation with minimum wear. The flow pattern interconnects the highest pressure from two separate pressure zones (ports "A" or "B") to a common port "C". The two pressure zones, ports A or B can never flow to one another.

The design incorporates precision sealing required for low pressure or high pressure operation. The seal is teflon coated to prevent sticking under the most adverse conditions of exposure or prolonged actuation in one position. The Cla-Val Model CVS-1 Shuttle Valve incorporates all the required features for lasting dependable service.

## Dimensions

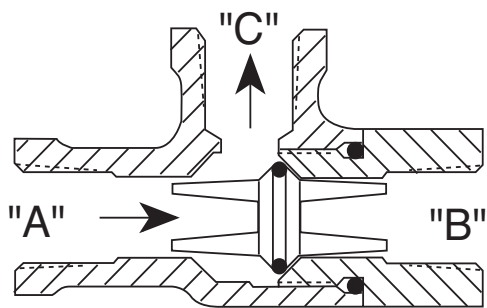


## Specifications

Size	3/8" NPT
End Detail	300 ANSI B2.1
Pressure Rating	400 psi Max.
Shifting Differential	10" Water Column Differential
CV Factor	A" to "C" 3.5 "B" to "C" 3.1
Temperature Range	Water to 140°F
Materials	<b>Body</b> Cast Bronze ASTM B-62 <b>Internal Trim</b> Delrin (Dupont 500) <b>Rubber Parts</b> Static Seal - Buna N® Synthetic Rubber Shuttle Seal - Buna N® Synthetic Rubber Teflon Coated

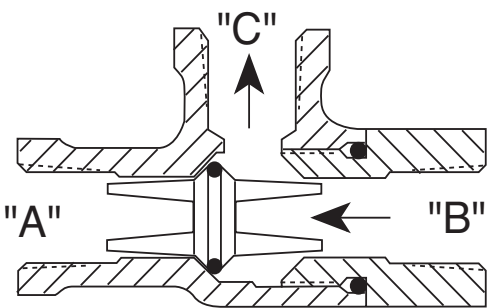


Principle of Operation



Flow Direction "A" to "C"

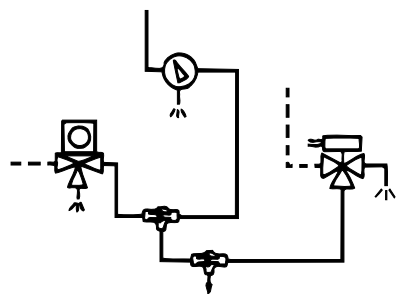
When pressure at port "A" is greater than port "B", the shuttle shifts allowing flow from port "A" to "C",



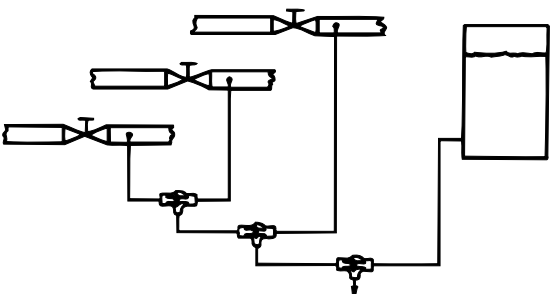
Flow Direction "B" to "C"

When pressure at port "B" is greater than port "A", the shuttle shifts allowing flow from port "B" to "C",

APPLICATIONS

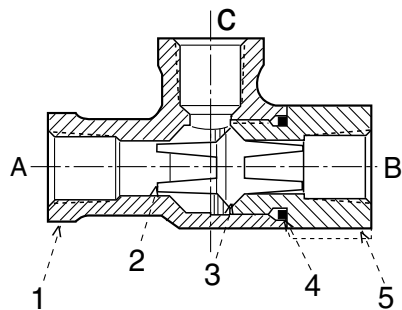


Sending remote pressure signals form several locations.



Receiving pressure signals form the highest pressure available.

PARTS LIST



Item No.	Description	Qty
1	Body-Shuttle Valve	1
2	Poppet	1
3	O-Ring	1
4.	O-Ring	1
5.	Seat-Shuttle Valve	1

PURCHASE SPECIFICATIONS

The valve shall be a throw-way type equipped with on moving part and a replaceable teflon coated seal. The seal shall be drip tight throughout the entire pressure range. The minimum shifting differential for the valve shall be 10 inches of water column differential. The valve shall be a Model CVS-1 as manufactured by Cla-Val, Newport Beach, California 92659

When Ordering,  
Please Specify

- 1. Catalog Number
- 2. Size
- 3. Fluid to be handled
- 4. Temperature
- 5. Materials