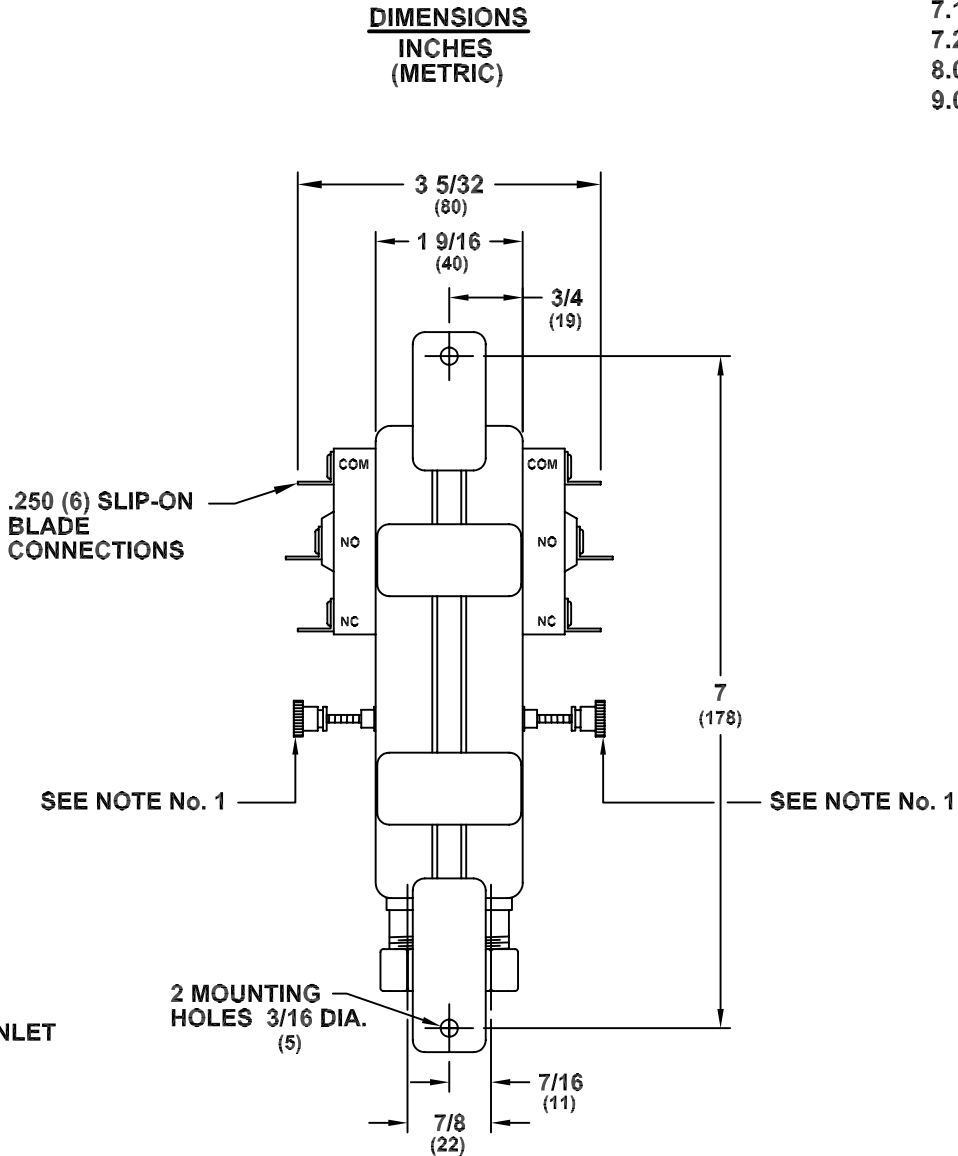
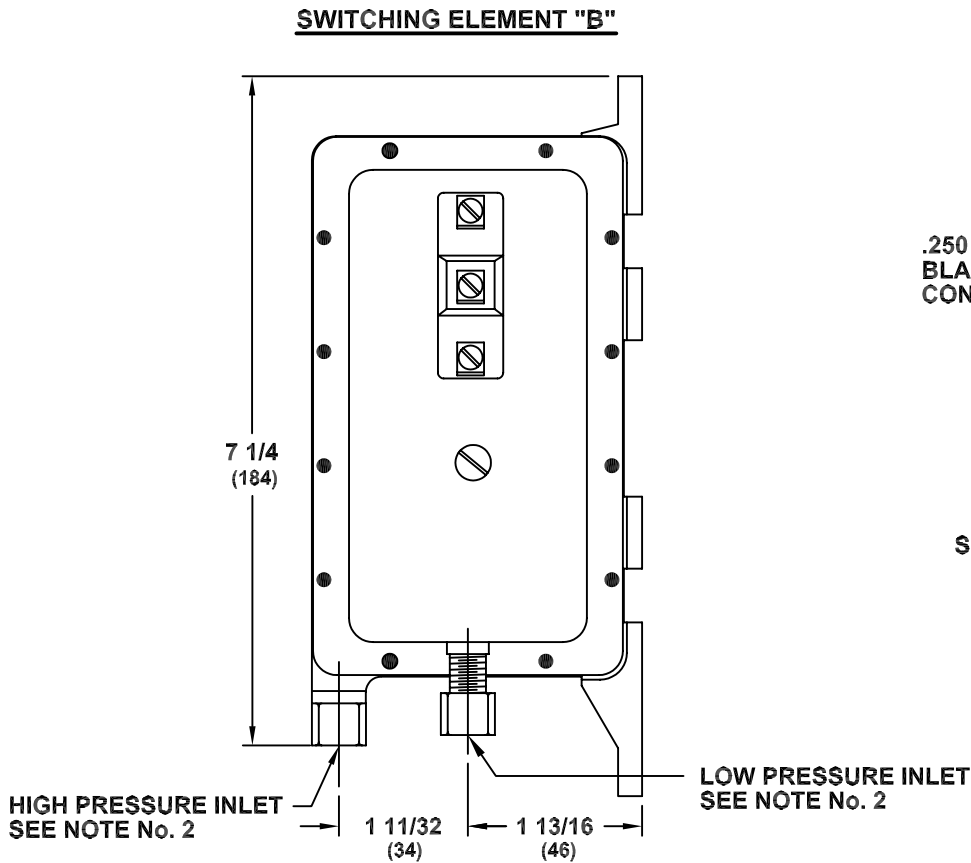
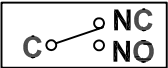


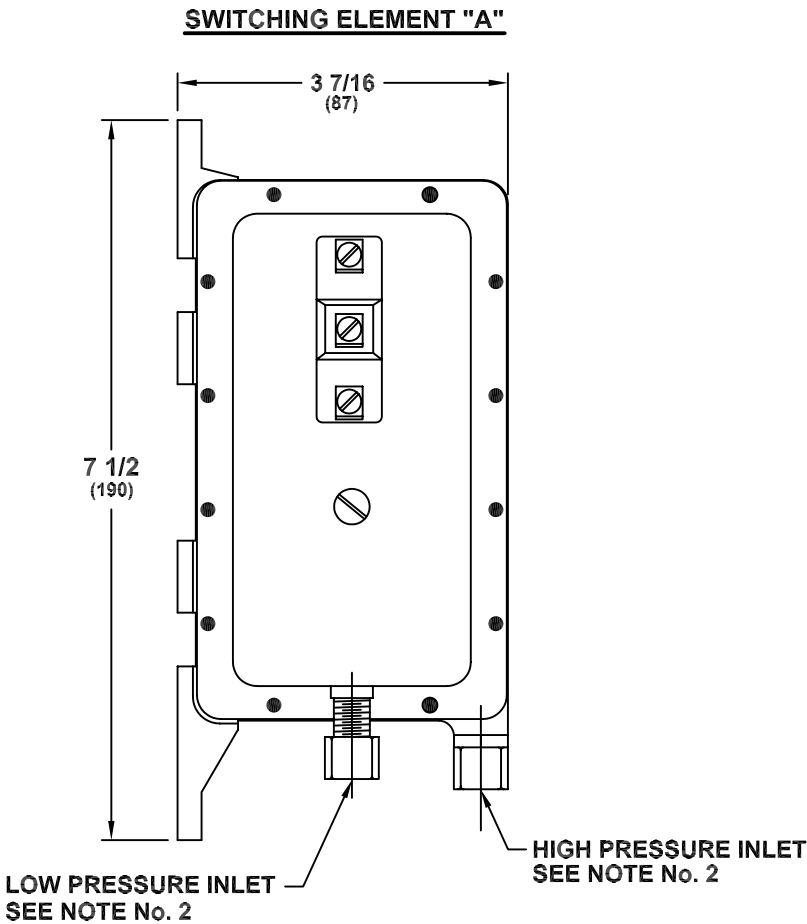
SPECIFICATIONS: SWITCHING ELEMENT "B"

- 1.0 Mounting Position: Diaphragm Vertical (See Diagram Below).
- 2.0 Set Point (Sealed): Factory Set @ .15" +.00" / -.10" w.c. Pressure Fall Vertical Plane.
- 2.1 Field Adjustable: "Operate Range" .05" w.c. to 2.0" w.c.
- 2.2 Field Adjustable: "Release Range" .04" w.c. to 1.9" w.c.
- 3.0 Approximate Switching Differential: Progressive; Increasing From .02 ± .01" w.c. at Minimum Set Point To Approximately .1" w.c. At Maximum Set Point.
- 4.0 Measured Media: Air
- 5.0 Operating Temperature Range: -40° to 176° F (-40.0° C to 80.0° C).
- 6.0 Life: 100,000 Cycles Minimum At ½ PSI Maximum Pressure Each Cycle And At Maximum Electrical Load.
- 7.0 Electrical Rating
- 7.1 300 Va Pilot Duty At 115 to 277 Vac
- 7.2 15a Non-inductive to 277 Vac
- 8.0 Contact Arrangement: SPDT
- 9.0 Position Of Switch Contacts Before Pressure Is Applied:



SPECIFICATIONS: SWITCHING ELEMENT "A"

- 1.0 Mounting Position: Diaphragm Vertical (See Diagram Below).
- 2.0 Set Point (Sealed): Factory Set @ 0.95" +.10" / -.00" w.c. Pressure Fall Vertical Plane.
- 2.1 Field Adjustable: "Operate Range" .05" w.c. to 2.0" w.c.
- 2.2 Field Adjustable: "Release Range" .04" w.c. to 1.9" w.c.
- 3.0 Approximate Switching Differential: Progressive; Increasing From .02 ± .01" w.c. at Minimum Set Point To Approximately .1" w.c. At Maximum Set Point.
- 4.0 Measured Media: Air
- 5.0 Operating Temperature Range: -40° to 176° F (-40.0° C to 80.0° C).
- 6.0 Life: 100,000 Cycles Minimum At ½ PSI Maximum Pressure Each Cycle And At Maximum Electrical Load.
- 7.0 Electrical Rating
- 7.1 300 Va Pilot Duty At 115 to 277 Vac
- 7.2 15a Non-inductive to 277 Vac
- 8.0 Contact Arrangement: SPDT
- 9.0 Position Of Switch Contacts Before Pressure Is Applied:



- NOTES:
1. External Adjustment Screw - Sealed
2. Sample Line Connectors, (1) High Pressure and (2) Low Pressure, Complete With Nut and Ferrule Will Accept 1/4" OD Tubing ie Copper, Aluminum or Plastic.
3. Approval or Recognition By: U.L. File MH6213; and C.S.A. File LR18754.

						SENSING SWITCH SPECIFICATIONS CAPTIVE AIR			
A	3117	8/18/04	MJA	FL		CLEVELAND CONTROLS MODEL: DDP-106-256			
REV	DCN No.	DATE	BY	CHKD					
DRAWING RELEASE No. 2746									
DWN	DATE	CHKD	Cleveland Controls Division of UniControl Inc. 1111 Brookpark Rd. Cleveland, Ohio 44109-5825 .XX = ±.015 .XXX = ±.005 ANGLES = 1/4			USED ON	SHEET 1 OF 1		
RW	01/06/04	FL							
CHKD	DATE	SCALE				B20741-256		A REV	
FL	01/06/04	NONE							