

BURNERS

VENTURI

APPLICATION: Ransome venturis are designed for use with Ransome burners, but many customers and other burner head manufacturers also use them with their products.

DESCRIPTION: Each venturi is sold as a complete unit which includes: venturi, spud, orifice and locking ring. Sizes are by pipe size connection. All venturis will be shipped with blank orifices unless drill size is specified with order.

MODEL NUMBER	DIMENSIONS INCHES		ORIFICE SIZE	GAS CONNECTION	VENTURI CONNECTION	WT. LBS.
	A	B				
V050	5	1-7/8	1/4 - 28 MNPS	1/8" MNPS	1/2" MNPS	9-1/2 oz.
V050S	2-3/8	1-7/8	1/4 - 28 MNPS	1/8" MNPS	1/2" MNPS	9-1/2 oz.
V050B	1-1/2	2-5/8	1/4 - 28 MNPS	1/8" MNPS	1/2" MNPS	9 oz.
V075	6-3/4	2-3/8	5/16 - 32 MNPS	1/4" MNPS	3/4" MNPS	14 oz.
V100	6-1/8	3	7/16 - 27 MNPS	1/2" MNPS	1" MNPS	1-3/4
V125	7-1/8	3	7/16 - 27 MNPS	1/2" MNPS	1-1/4" MNPS	1-3/4
V150	11-7/8	3-5/8	7/16 - 27 MNPS	1/2" MNPS	1-1/2" MNPS	4
V200	15-1/4	4-1/8	7/16 - 27 MNPS	1/2" MNPS	2" MNPS	6
V300	18-1/8	5-1/4	5/8 - 27 MNPS	3/4" MNPS	3" MNPS	11

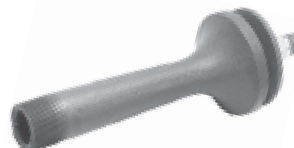
V050S



V050B



V050, V075, V100, V125, V150



V200, V300



TORCH-TYPE STRAIGHT FLAME BURNERS

APPLICATION: Torch type straight flame burners are used in a variety of applications. Some of their more popular uses include pilots, heaters, furnaces, rivet heating, immersion tubes, preheating, ore roasting ovens, sand and aggregate driers, tunnel driers and horizontal boilers.

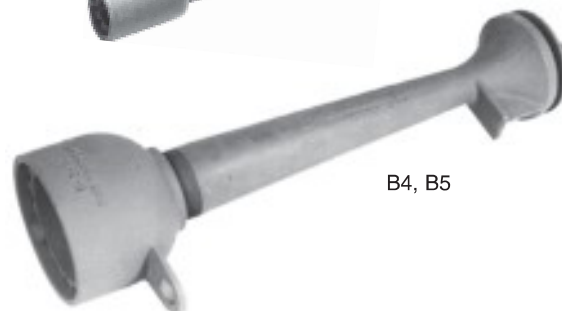
DESCRIPTION: The heads of these burners are cylindrical in shape. The grid is designed to produce a relatively long tapering flame. The larger sized B4 and B5 are equipped with integrally cast brackets, designed for mounting pilots. These burners do not come with pilots as standard units, consequently if a pilot is desired, your order should so state.

BURNER	AIR SHUTTER	SPUD	VENTURI
B1	AS200	SP12L	V050
B2	AS300	SP50L	V100
B3	AS300	SP50L	V125
B4	AS362	SP50L	V150
B5	AS412	SP50L	V200

B1, B2, B3



B4, B5



NOTE: See page 18 for flame characteristics.

MODEL NUMBER	DIMENSIONS INCHES			BURNER BTU CAPACITIES												WT. LBS.	
				LP-GAS						NATURAL GAS							
	A	B	C	ORIFICE	11" W.C.	1 PSI	2 PSI	5 PSI	10 PSI	20 PSI	ORIFICE	7" W.C.	1 PSI	2 PSI	5 PSI		10 PSI
B1	8-1/2	1-3/8	1-7/8	69	5,900	9,700	13,900	21,600	30,700	43,000	60	3,900	10,900	15,200	---	---	---
											58	---	---	---	26,100	37,800	
B2	10-1/2	2-1/4	2-3/4	64	9,000	14,800	20,900	33,200	46,700	66,400	52	9,800	27,600	38,500	---	---	4
											51	---	---	---	66,900	95,200	
B3	12	3-1/4	2-3/4	50	34,200	55,300	77,500	123,000	175,900	246,000	35	29,900	81,400	115,600	---	---	7
											30	---	---	---	250,200	356,400	
B4	17	3-3/4	3-3/8	43	53,000	89,800	126,700	200,500	286,600	403,400	28	48,900	133,100	188,450	---	---	---
											24	---	---	---	347,600	495,300	
B5	21	5	4-1/8	33	89,800	145,200	205,400	324,700	462,400	649,400	23	58,700	159,200	225,400	---	---	15
											20	---	---	---	389,100	554,900	

IMPORTANT: When ordering burners, it is important that you specify the type of gas to be used as well as the gas pressure(s) at which the burners may be operated. For manufactured gas, state the BTU quality and specific gravity.