

1. ACCEPTANCE

If this writing differs in any way from the terms and conditions of Buyer's order or if the writing is construed as an acceptance or as a confirmation acting as an acceptance then Seller's acceptance is MADE CONDITIONAL ON BUYER'S ASSENT TO ANY TERMS AND CONDITIONS HEREIN THAT ARE DIFFERENT FROM OR ADDITIONAL TO THOSE CONTAINED IN BUYER'S WRITING. Further this writing shall be deemed notice of CONTAINED objection to such terms and conditions of Buyer. If the writing is construed as the order, acceptance hereof is EXPRESSLY LIMITED TO THE TERMS AND CONDITIONS CONTAINED HEREIN. In any event, Buyer's acceptance of the goods shall manifest Buyer's assent to Seller's terms and conditions. No addition to or modification of these terms will be effective unless set forth in writing and agreed to by Seller.

2. CONDITIONS OF SALE

- a. Minimum Billing is \$150.00 Net.
- b. Orders of Less than \$250.00 will be charged a \$25.00 Processing Fee.
- c. Price Changes: Prices are subject to change without notice and are based upon prices in effect at time of shipment.
- d. We Reserve the Right to Round Off Quantities to the Nearest Carton.
- e. There will be a 25% charge for broken cartons.
- f. Returned Goods: No returns are to be made to DuraTrac without first obtaining a return authorization number and a freight classification code number from the Company. Returns may be subject to a 25% restocking charge, plus any transportation charges incurred.
- g. Damaged Product: Any claim for damaged or lost product(s) must be made within seven (7) days of receipt of order.
- h. Shipments: All shipments are FOB shipping point, freight prepaid for all orders over \$1500 net. Under \$1500, freight will be charged as a line item on invoice. DuraTrac reserves the right to ship twenty percent (20%) above purchase order quantities of non-catalog listed items built to customer's specifications.
- i. Terms: 2% 10 days, Net 30 Days, unless otherwise stated. Interest on accounts overdue more than (30) days will be charged 2% per month or the highest rate permitted by law, whichever is lower. Buyer shall be liable for any collection costs or attorney's fees incurred as a result of Buyer's failure to comply with this agreement.

3. WARRANTY AND REMEDIES

- a. LIMITED WARRANTY. Products manufactured by DuraTrac are made to conform to all applicable codes and standards in the United States and Canada. DuraTrac's products will be repaired or replaced at our option within three years of the date of its first installation into service. There is no warranty for products that have been reused, have been attached to an appliance that has been moved to a different location or where original fittings supplied by DuraTrac have been changed or removed. There will be no responsibility or liability accepted for any failures caused by the use of chemical products or cleaners containing chlorine and/or ammonia. DuraTrac will not be liable for incidental, consequential, indirect damages or for special circumstances caused by the failure of our product even if it has been advised of the possibility of such damages. No other warranty, expressed or implied, is made with regard to products of DuraTrac.
- b. LIMITATION OF REMEDIES. Buyer's sole and exclusive remedy against Seller will be limited, at Seller's option, to the repair or replacement by Seller of any nonconforming product for which claim is made by Buyer or to the issuance of a credit for such nonconforming product in accordance with these terms and conditions provided Buyer obtains a return material authorization from Seller and Seller is given a reasonable opportunity to inspect the product and confirm such nonconformity. This exclusive remedy shall not be deemed to have failed of its essential purpose so long as Seller is willing and able to repair or replace the nonconforming product and, in any event, Seller's liability for any damages due Buyer shall be limited to the purchase price of the nonconforming products. THIS PARAGRAPH DETAILS BUYER'S SOLE AND EXCLUSIVE REMEDY FOR BREACH OF WARRANTY.
- c. LIMITATION ON ACTIONS AND LIABILITY. The statute of limitations applicable to all claims arising under this agreement shall be one year from the date the claim accrues. SELLER WILL NOT BE LIABLE FOR ANY LOSS, DAMAGE OR INJURY RESULTING FROM DELAY IN DELIVERY OF THE PRODUCTS OR FOR ANY FAILURE TO PERFORM WHICH IS DUE TO CIRCUMSTANCES BEYOND ITS CONTROL. THE MAXIMUM LIABILITY, IF ANY, OF SELLER FOR ALL DAMAGES, INCLUDING WITHOUT LIMITATION CONTRACT DAMAGES AND DAMAGES FOR INJURIES TO PERSONS OR PROPERTY, WHETHER ARISING FROM SELLER'S BREACH OF THIS AGREEMENT, BREACH OF WARRANTY, NEGLIGENCE, STRICT LIABILITY OR OTHER TORT WITH RESPECT TO THE PRODUCTS, OR ANY SERVICES IN CONNECTION WITH THE PRODUCTS, IS LIMITED TO AN AMOUNT NOT TO EXCEED THE PRICE OF THE PRODUCTS. IN NO EVENT SHALL SELLER BE LIABLE TO BUYER FOR ANY INCIDENTAL, CONSEQUENTIAL, OR SPECIAL DAMAGES, INCLUDING WITHOUT LIMITATION, LOST REVENUES AND PROFITS, EVEN IF IT HAS BEEN ADVISED OF THE POSSIBILITY OF SUCH DAMAGES. THE RIGHT TO RECOVER DAMAGES WITHIN THE LIMITATIONS SPECIFIED IS BUYER'S EXCLUSIVE ALTERNATIVE REMEDY IN THE EVENT THAT ANY OTHER CONTRACTUAL REMEDY FAILS OF ITS ESSENTIAL PURPOSE.

4. CREDIT APPROVAL

Shipment and delivery of goods and performance of work shall at all times be subject to the approval of Seller's credit department and Seller may at any time decline to make any shipment or delivery or perform any work except upon receipt of payment or upon terms and conditions or security satisfactory to Seller.

5. CANCELLATION

Orders may only be cancelled with Seller's written approval. In the event of cancellation of an order, or any part hereof, incorporating, special material, parts, components, etc., Buyer shall pay: (a) the contract price of all completed items; (b) that portion of the contract price that is equal to the degree of completion of products in process, effective on the date notice of cancellation is received; (c) the cost of any materials and supplies which Seller shall have purchased to perform and which cannot be readily resold or used for other or similar purposes; and (d) charges for cancellation of tool orders or tool removal charges.

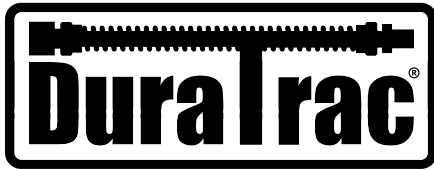
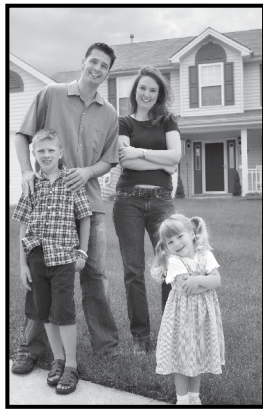


TABLE OF CONTENTS

About DuraTrac Products	2
Gas Connectors	3-4
Quiet-Flex Gas Connectors	5
1 1/4" Gas Connector for High BTU Applications	5
Gas Connector User Instructions	6
Fitting & Valves	7
Part Number System	8
Reference Guides	9
Cross-Reference	10
Water Flex Connectors	11
Scale Prevention Systems	12
Tankless Water Heater Kits	13
Braided SS Dishwasher & Icemaker Connectors	14



Performance You Can Trust



We at **DuraTrac®** believe that a gas connector is more than a gas connector. We believe that a gas connector is a commitment to safety. The **DuraTrac® Quality Guarantee** is our way of showing you that we are committed to providing you with the peace of mind and assurance that your home and loved ones deserve.

Backed by the most stringent certification standards, all **DuraTrac® Gas Flex & Connectors** are built to safely meet and exceed your commercial gas connection requirements. Furthermore, **DuraTrac® Gas Flex** incorporates durable stainless steel construction without tapering at the connection to insure optimal flow and increase strength.

You are always safe with **DuraTrac®**. We guarantee it and you should expect nothing less. Our customer service team is here to serve all your gas connection needs and to answer any questions that may arise. Let our industry experts help build your product mix and be your reliable source for the most advanced engineered gas connection products in the market.

DuraTrac® Engineered



- ✓ 100% **CSA** Tested And Approved For Indoor And Outdoor Use.
- ✓ Complies: **ANSI Z21.75/CSA 6.27** Connectors for Outdoor Gas Appliances and Manufactured Homes.



- ✓ Complies: **ANSI Z21.24/CSA 6.10** Connectors For Gas Appliances.
- ✓ Backed By A **3 Year Warranty**, Three Times The Current Industry Standard.
- ✓ Manufactured In An **ISO 9001** Certified State-of-the-Art Production Facility.
- ✓ Backed By **\$3 Million Dollars** Of Product Liability Insurance.



- ✓ Made In Facilities That Are **CSA** Inspected Every Three Months.
- ✓ Tested To Withstand Over **25 Times** The Required PSI.
- ✓ 100% Tested And Inspected For Leaks And Defects.



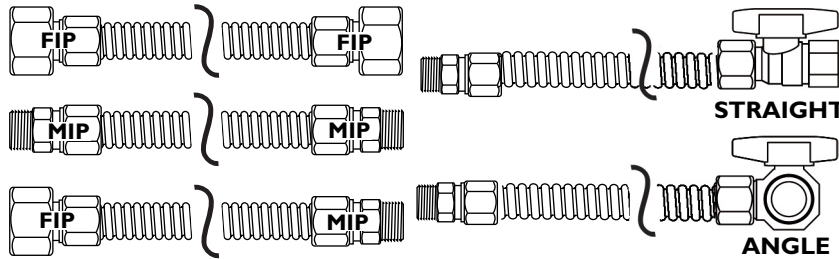
"Preferred By Professionals."



Gas Connectors



DS & DSC Series Gas Connector Combinations



Can't Find Your Size?

Other DuraTrac® combinations are available upon request (see page 5).

For ordering information, please call **DuraTrac® Customer Service** toll free at **1-866-678-8214**.

DS = Un-Coated Stainless Steel DSC = Poly-Coated

DS(C)12		1/2"OD (3/8"ID) TUBING WITH 1/2" FLARE NUTS							
Description		12"	18"	24"	30"	36"	48"	60"	72"
1/2" FIP x 1/2" FIP	DSC1212B	DSC1218B	DSC1224B	DSC1230B	DSC1236B	DSC1248B	DSC1260B	DSC1272B	
	DS1212B	DS1218B	DS1224B	DS1230B	DS1236B	DS1248B	DS1260B	DS1272B	
1/2" FIP x 1/2" MIP	DSC1212C	DSC1218C	DSC1224C	DSC1230C	DSC1236C	DSC1248C	DSC1260C	DSC1272C	
	DS1212C	DS1218C	DS1224C	DS1230C	DS1236C	DS1248C	DS1260C	DS1272C	
1/2" MIP x 1/2" MIP	DSC1212D	DSC1218D	DSC1224D	DSC1230D	DSC1236D	DSC1248D	DSC1260D	DSC1272D	
	DS1212D	DS1218D	DS1224D	DS1230D	DS1236D	DS1248D	DS1260D	DS1272D	
1/2" MIP x 1/2" FIP STRAIGHT VALVE	DSC1212V1	DSC1218V1	DSC1224V1	DSC1230V1	DSC1236V1	DSC1248V1	DSC1260V1	DSC1272V1	
	DS1212V1	DS1218V1	DS1224V1	DS1230V1	DS1236V1	DS1248V1	DS1260V1	DS1272V1	
1/2" MIP x 1/2" FIP ANGLE VALVE	DSC1212V2	DSC1218V2	DSC1224V2	DSC1230V2	DSC1236V2	DSC1248V2	DSC1260V2	DSC1272V2	
	DS1212V2	DS1218V2	DS1224V2	DS1230V2	DS1236V2	DS1248V2	DS1260V2	DS1272V2	
BOX/LBS	Fittings	25/14	25/17	25/19	25/23	25/25	25/30	12/17	12/19
	Valves	25/23	25/24	25/27	25/30	25/32	25/37	12/20	12/23

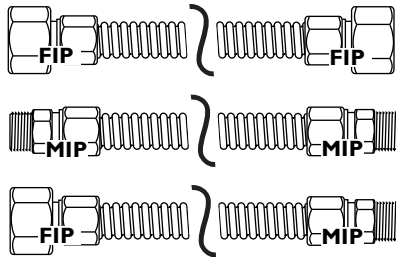
DS(C)38		3/8"OD (1/4"ID) TUBING WITH 3/8" FLARE NUTS							
Description		12"	18"	24"	30"	36"	48"	60"	72"
1/2" FIP x 1/2" FIP	DSC3812B	DSC3818B	DSC3824B	DSC3830B	DSC3836B	DSC3848B	DSC3860B	DSC3872B	
	DS3812B	DS3818B	DS3824B	DS3830B	DS3836B	DS3848B	DS3860B	DS3872B	
1/2" FIP x 3/8" FIP	DSC3812F	DSC3818F	DSC3824F	DSC3830F	DSC3836F	DSC3848F	DSC3860F	DSC3872F	
	DS3812F	DS3818F	DS3824F	DS3830F	DS3836F	DS3848F	DS3860F	DS3872F	
3/8" FIP x 3/8" FIP	DSC3812H	DSC3818H	DSC3824H	DSC3830H	DSC3836H	DSC3848H	DSC3860H	DSC3872H	
	DS3812H	DS3818H	DS3824H	DS3830H	DS3836H	DS3848H	DS3860H	DS3872H	
1/2" FIP x 1/2" MIP	DSC3812C	DSC3818C	DSC3824C	DSC3830C	DSC3836C	DSC3848C	DSC3860C	DSC3872C	
	DS3812C	DS3818C	DS3824C	DS3830C	DS3836C	DS3848C	DS3860C	DS3872C	
3/8" FIP x 3/8" MIP	DSC3812E	DSC3818E	DSC3824E	DSC3830E	DSC3836E	DSC3848E	DSC3860E	DSC3872E	
	DS3812E	DS3818E	DS3824E	DS3830E	DS3836E	DS3848E	DS3860E	DS3872E	
1/2" MIP x 1/2" MIP	DSC3812J	DSC3818J	DSC3824J	DSC3830J	DSC3836J	DSC3848J	DSC3860J	DSC3872J	
	DS3812J	DS3818J	DS3824J	DS3830J	DS3836J	DS3848J	DS3860J	DS3872J	
1/2" MIP x 1/2" FIP STRAIGHT VALVE	DSC3812V1	DSC3818V1	DSC3824V1	DSC3830V1	DSC3836V1	DSC3848V1	DSC3860V1	DSC3872V1	
	DS3812V1	DS3818V1	DS3824V1	DS3830V1	DS3836V1	DS3848V1	DS3860V1	DS3872V1	
1/2" MIP x 1/2" FIP ANGLE VALVE	DSC3812V2	DSC3818V2	DSC3824V2	DSC3830V2	DSC3836V2	DSC3848V2	DSC3860V2	DSC3872V2	
	DS3812V2	DS3818V2	DS3824V2	DS3830V2	DS3836V2	DS3848V2	DS3860V2	DS3872V2	
BOX/LBS	Fittings	25/11	25/12	25/14	25/15	25/16	25/19	12/12	12/14
	Valves	25/16	25/18	25/19	25/20	25/22	25/24	12/15	12/16



Gas Connectors

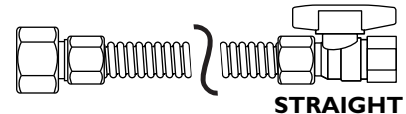


DS & DSC Gas Connector Combinations (continued)

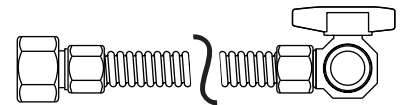


Product Features

- Annealed 304 Stainless Steel
- 100% Factory Leak Tested
- Strong and Flexible
- Full Flow/Non-Restrictive Inner Diameter
- Poly-Coated Industry Standard Yellow
- Will Not Corrode, Discolor or Rust
- Custom Ordering Available



STRAIGHT



ANGLE

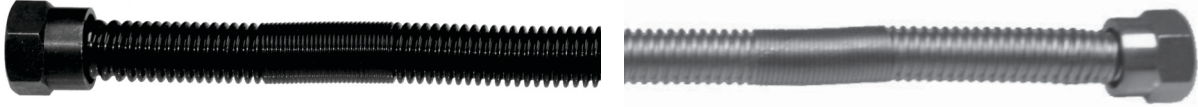
DS = Un-Coated Stainless Steel
DSC = Poly-Coated

DSC88		1"OD (3/4"ID) TUBING WITH 1" FLARE NUTS						
(*only available Yellow Coated)		12"	18"	24"	36"	48"	60"	72"
Description								
3/4" FIP x 3/4" FIP		DSC8812B	DSC8818B	DSC8824B	DSC8836B	DSC8848B	DSC8860B	DSC8872B
3/4" FIP x 3/4" MIP		DSC8812C	DSC8818C	DSC8824C	DSC8836C	DSC8848C	DSC8860C	DSC8872C
3/4" MIP x 3/4" MIP		DSC8812D	DSC8818D	DSC8824D	DSC8836D	DSC8848D	DSC8860D	DSC8872D
1" FIP x 1" FIP		DSC8812R	DSC8818R	DSC8824R	DSC8836R	DSC8848R	DSC8860R	DSC8872R
1" FIP x 1" MIP		DSC8812S	DSC8818S	DSC8824S	DSC8836S	DSC8848S	DSC8860S	DSC8872S
1" MIP x 1" MIP		DSC8812T	DSC8818T	DSC8824T	DSC8836T	DSC8848T	DSC8860T	DSC8872T
3/4" FIP x 3/4" FIP STRAIGHT VALVE		DSC8812VI	DSC8818VI	DSC8824VI	DSC8836VI	DSC8848VI	DSC8860VI	DSC8872VI
BOX/LBS	Fittings	10/10	10/11	10/12	10/14	10/16	5/10	5/11
	Valves	10/15	10/16	10/17	10/19	10/10	5/12	5/13

DS(C)58		5/8"OD (1/2"ID) TUBING WITH 15/16" FLARE NUTS							
Description		12"	18"	24"	30"	36"	48"	60"	72"
3/4" FIP X 3/4" FIP		DSC5812B	DSC5818B	DSC5824B	DSC5830B	DSC5836B	DSC5848B	DSC5860B	DSC5872B
		DS5812B	DS5818B	DS5824B	DS5830B	DS5836B	DS5848B	DS5860B	DS5872B
3/4" FIP X 1/2" FIP		DSC5812L	DSC5818L	DSC5824L	DSC5830L	DSC5836L	DSC5848L	DSC5860L	DSC5872L
		DS5812L	DS5818L	DS5824L	DS5830L	DS5836L	DS5848L	DS5860L	DS5872L
1/2" FIP X 1/2" FIP		DSC5812F	DSC5818F	DSC5824F	DSC5830F	DSC5836F	DSC5848F	DSC5860F	DSC5872F
		DS5812F	DS5818F	DS5824F	DS5830F	DS5836F	DS5848F	DS5860F	DS5872F
3/4" FIP X 3/4" MIP		DSC5812C	DSC5818C	DSC5824C	DSC5830C	DSC5836C	DSC5848C	DSC5860C	DSC5872C
		DS5812C	DS5818C	DS5824C	DS5830C	DS5836C	DS5848C	DS5860C	DS5872C
3/4" FIP X 1/2" MIP		DSC5812E	DSC5818E	DSC5824E	DSC5830E	DSC5836E	DSC5848E	DSC5860E	DSC5872E
		DS5812E	DS5818E	DS5824E	DS5830E	DS5836E	DS5848E	DS5860E	DS5872E
1/2" FIP X 1/2" MIP		DSC5812H	DSC5818H	DSC5824H	DSC5830H	DSC5836H	DSC5848H	DSC5860H	DSC5872H
		DS5812H	DS5818H	DS5824H	DS5830H	DS5836H	DS5848H	DS5860H	DS5872H
1/2" MIP X 1/2" MIP		DSC5812I	DSC5818I	DSC5824I	DSC5830I	DSC5836I	DSC5848I	DSC5860I	DSC5872I
		DS5812I	DS5818I	DS5824I	DS5830I	DS5836I	DS5848I	DS5860I	DS5872I
1/2" MIP X 3/4" MIP		DSC5812J	DSC5818J	DSC5824J	DSC5830J	DSC5836J	DSC5848J	DSC5860J	DSC5872J
		DS5812J	DS5818J	DS5824J	DS5830J	DS5836J	DS5848J	DS5860J	DS5872J
3/4" FIP X 3/4" FIP STRAIGHT VALVE		DSC5812VI	DSC5818VI	DSC5824VI	DSC5830VI	DSC5836VI	DSC5848VI	DSC5860VI	DSC5872VI
		DS5812VI	DS5818VI	DS5824VI	DS5830VI	DS5836VI	DS5848VI	DS5860VI	DS5872VI
3/4" FIP X 3/4" FIP ANGLE VALVE		DSC5812V2	DSC5818V2	DSC5824V2	DSC5830V2	DSC5836V2	DSC5848V2	DSC5860V2	DSC5872V2
		DS5812V2	DS5818V2	DS5824V2	DS5830V2	DS5836V2	DS5848V2	DS5860V2	DS5872V2
BOX/LBS	Fittings	25/19	25/21	25/25	25/28	25/31	25/37	12/22	12/26
	Valves	25/31	25/33	25/37	25/40	25/43	25/49	12/26	12/31



Quiet-Flex Gas Connectors



Introducing the **Quiet-Flex**, a new line of stainless steel flexible gas connectors for gas logs, fireplaces, space heaters, and other gas appliances. **Quiet-Flex** is designed to eliminate the annoying whistle that gas flow produces in some high BTU installations. **DuraTrac**® offers a stainless steel connector and a black-coated stainless steel connector. The black coating helps hide the **Quiet-Flex** from view and can withstand temperatures up to 350 degrees.

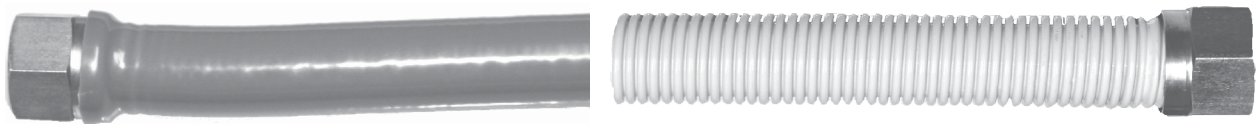
Nut x Nut *

* Not CSA Design Approved

Description	Length	Part #: SS	Part #: Black SS
3/8"OD (1/4"ID) with 3/8" Flare Nuts	10"	DA3810	DB3810
3/8"OD (1/4"ID) with 3/8" Flare Nuts	16"	DA3816	DB3816
3/8"OD (1/4"ID) with 3/8" Flare Nuts	22"	DA3822	DB3822
3/8"OD (1/4"ID) with 3/8" Flare Nuts	28"	DA3828	DB3828
3/8"OD (1/4"ID) with 3/8" Flare Nuts	34"	DA3834	DB3834
1/2"OD (3/8"ID) with 1/2" Flare Nuts	10"	DA1210	DB1210
1/2"OD (3/8"ID) with 1/2" Flare Nuts	16"	DA1216	DB1216
1/2"OD (3/8"ID) with 1/2" Flare Nuts	22"	DA1222	DB1222
1/2"OD (3/8"ID) with 1/2" Flare Nuts	28"	DA1228	DB1228
1/2"OD (3/8"ID) with 1/2" Flare Nuts	34"	DA1234	DB1234



1 1/4" Gas Connector for High BTU Applications



DSC OR (G)99 1 1/4" OD (1"ID) TUBING WITH 1 1/4" FLARE NUTS

Description	12"	18"	24"	36"	48"	60"	72"
1" FIP x 1" FIP	DSC9912B	DSC9918B	DSC9924B	DSC9936B	DSC9948B	DSC9960B	DSC9972B
	DSG9912B	DSG9918B	DSG9924B	DSG9936B	DSG9948B	DSG9960B	DSG9972B
1" FIP x 1" MIP	DSC9912C	DSC9918C	DSC9924C	DSC9936C	DSC9948C	DSC9960C	DSC9972C
	DSG9912C	DSG9918C	DSG9924C	DSG9936C	DSG9948C	DSG9960C	DSG9972C
1" MIP x 1" MIP	DSC9912D	DSC9918D	DSC9924D	DSC9936D	DSC9948D	DSC9960D	DSC9972D
	DSG9912D	DSG9918D	DSG9924D	DSG9936D	DSG9948D	DSG9960D	DSG9972D
1 1/4" FIP x 1 1/4" FIP	DSC9912R	DSC9918R	DSC9924R	DSC9936R	DSC9948R	DSC9960R	DSC9972R
	DSG9912R	DSG9918R	DSG9924R	DSG9936R	DSG9948R	DSG9960R	DSG9972R
1 1/4" FIP x 1 1/4" MIP	DSC9912S	DSC9918S	DSC9924S	DSC9936S	DSC9948S	DSC9960S	DSC9972S
	DSG9912S	DSG9918S	DSG9924S	DSG9936S	DSG9948S	DSG9960S	DSG9972S
1 1/4" MIP x 1 1/4" MIP	DSC9912T	DSC9918T	DSC9924T	DSC9936T	DSC9948T	DSC9960T	DSC9972T
	DSG9912T	DSG9918T	DSG9924T	DSG9936T	DSG9948T	DSG9960T	DSG9972T

**Available Yellow Poly-Coated or Grey P.V.C. Jacketed (Use "G" for Grey P.V.C.--I.E. DSG9924C)



Gas Connector User Instructions



CERTIFIED

- Certified by C.S.A for indoor and outdoor use.
- Design complies with **ANSI Z21.24 CSA/CGA 6.10** Standard “Connectors for Gas Appliance” and **ANSI Z21.75 CSA/CGA 6.27** Standard “Connectors for Outdoor Gas Appliance and Manufactured Homes”.
- Gas connector installation for a fixed appliance for indoor or outdoor use. Installation must be in accordance with the **National Fuel Code, ANSI Z233.1/NFPA54** and/or **CAN/CGA B149-latest edition, Installation Codes**.

INSTALL TIPS

- Gas connectors are designed for ease of installation and proper alignment of piping systems on appliances using natural or liquified petroleum (LP) gas at pressure not to exceed 1/2 psi (3.5 kPa). Improper use must be avoided.
- The gas connector should be of adequate length to reach from the gas supply line to the appliance without stretching.
- Flare seats must be kept clean and free of sealing compounds, grease, and oil.
- Gas connector is not to be installed underground or used in contact with the ground. The gas connector must not be concealed within or run through any wall, floor, or partition.
- Gas connector contact with foreign objects such as electrical wiring, copper or iron pipe, paneling, wall studs, and sheet metals must be avoided.
- The gas outlet shall be in the same room as the appliance.
- A readily accessible manual gas shutoff valve must be installed within 6 feet upstream of all appliances.
- Leak check final assembly. Use non-corrosive gas leak test solution, where the seeping bubbles will indicate a leak. Do not use dish washing detergent.
- Do not over tighten.

WARNING

- The connectors and fittings are designed for use only on the original installation and may not be reused for another gas appliance or at another location.
- A new connector and valve must be installed if an indoor or outdoor appliance is replaced.
- Gas connector must be replaced if it is exposed to fire or, in the case of a coated connector, if its coating is damaged.
- Any hole, crack, or other damage to connector or it's improper installation could lead to a potentially explosive release of gas!
- The connector should not be used if kinked, twisted or bent smaller than 1-1/2" internal diameter (i.e. approximately the diameter of a golf ball).
- Connector nuts must not be connected directly to pipe threads. The connector must be installed with pipe adapters provided.
- **Avoid having the following materials in contact with the connector:** Acids, Solvents, Caustic chemicals (e.g. ammonia, etc.), cleaning solution (dish soap, cleanser, bleach), solder flux and other chemicals used to etch metals, household chemicals (fungicides, insecticides), chlorinated chemicals and any liquid with chlorine like laundry bleach or dish washing detergent.
- The final assembly must be tested for leaks. Test for leaks only with leak test solution. Rinse all connections with water and dry because leak test solution may cause corrosion. **Do Not** use open flame to test for gas leaks.




Fitting & Valves




End Fittings & Ball Valves


Optimized for use with DuraTrac® DS(C) Gas Flex

Flare x FIP		Description	Part	For Series	Count	Wt. (lbs)
		3/8" OD FLARE x 3/8" FIP	D46S-66	DS38, DSC38	25	2
		3/8" OD FLARE x 1/2" FIP	D46S-68	DS38, DSC38	25	3
		1/2" OD FLARE x 3/8" FIP	D46S-86	DS12, DSC12	25	3
		1/2" OD FLARE x 1/2" FIP	D46S-88	DS12, DSC12	25	3
		1/2" OD FLARE x 3/4" FIP	D46S-812	DS12, DSC12	25	4
		15/16" FLARE x 1/2" FIP	D46S-158	DS58, DSC58	10	1
		15/16" FLARE x 3/4" FIP	D46S-1512	DS58, DSC58	10	2
		1" OD FLARE x 1" FIP	D46S-1616	DSC88	25	2
		1" OD FLARE x 3/4" FIP	D46S-1612	DSC88	25	3
		1 1/4" FLARE x 1" FIP	D46S-1816	DSC99	N/A	N/A
	1 1/4" FLARE x 1 1/4" FIP	D46S-1820	DSG99	N/A	N/A	




Flare x MIP		Description	Part	For Series	Count	Wt. (lbs)
		3/8" FLARE x 3/8" MIP (Tapped 1/4" FIP)	D48S-66	DS38, DSC38	25	2
		3/8" FLARE x 1/2" MIP (Tapped 3/8" FIP)	D48S-68	DS38, DSC38	25	3
		1/2" FLARE x 3/8" MIP (Tapped 1/4" FIP)	D48S-86	DS12, DSC12	25	3
		1/2" FLARE x 1/2" MIP (Tapped 3/8" FIP)	D48S-88	DS12, DSC12	25	4
		1/2" FLARE x 3/4" MIP (Tapped 1/2" FIP)	D48S-812	DS12, DSC12	25	5
		15/16" FLARE x 1/2" MIP (Tapped 3/8" FIP)	D48S-158	DS58, DSC58	10	1
		15/16" FLARE x 3/4" MIP (Tapped 1/2" FIP)	D48S-1512	DS58, DSC58	10	2
		1" OD FLARE x 3/4" MIP (Tapped 1/2" FIP)	D48S-1612	DS88, DSC88	25	2
		1" OD FLARE x 1" MIP (Tapped 3/4" FIP)	D48S-1616	DS88, DSC88	25	3
		1 1/4" FLARE x 1" MIP (Tapped 3/4" MIP)	D48S-1816	DSC99	N/A	N/A
	1 1/4" FLARE x 1 1/4" MIP (Tapped 1" MIP)	D48S-1820	DSG99	N/A	N/A	




Connector Valves - Flare x FIP		Description	Part	For Series	Count	Wt. (lbs)
		3/8" FLARE x 1/2" FIP	D89B-68	DS38, DSC38	25	11
		1/2" FLARE x 1/2" FIP	D89B-88	DS12, DSC12	25	12
		15/16" FLARE x 1/2" FIP	D89B-158	DS58, DSC58	25	17
		15/16" FLARE x 3/4" FIP	D89B-1512	DS58, DSC58	25	18



Angle Connector Valves - Flare x FIP		Description	Part	For Series	Count	Wt. (lbs)
		3/8" FLARE x 1/2" FIP	D90N-68	DS38, DSC38	25	9
		1/2" FLARE x 1/2" FIP	D90N-88	DS12, DSC12	25	12
		15/16" FLARE x 3/4" FIP	D90N-1512	DS58, DSC58	25	14

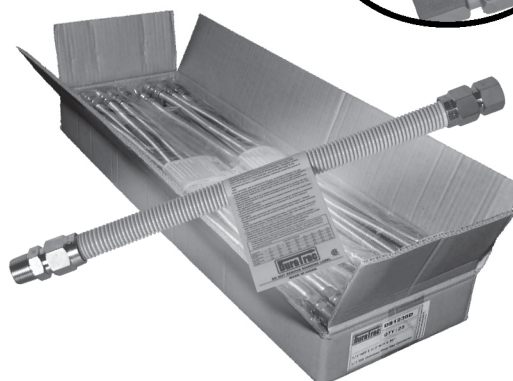
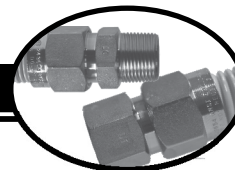


Straight Valves - FIP x FIP		Description	Part	Count	Wt. (lbs)
		3/8" FIP x 3/8" FIP	D89F-6	25	9
		1/2" FIP x 1/2" FIP	D89F-8	25	12
		3/4" FIP x 3/4" FIP	D89F-12	25	14
		1" FIP x 1" FIP	D89F-16	25	16





Part Number System



Part Number Legend

DS	C	58	72	B
	Add For Coated	Add For Diameter	Add # For Length	Add For Combo

End Fittings & Ball Valves Combination Options

DS(C)38 3/8"OD (1/4"ID)

B - 1/2" FIP x 1/2" FIP STRAIGHT
C - 1/2" FIP x 1/2" MIP STRAIGHT
D - 3/8" MIP x 3/8" MIP STRAIGHT
E - 3/8" FIP x 3/8" MIP STRAIGHT
F - 1/2" FIP x 3/8" FIP STRAIGHT
G - 1/2" MIP x 3/8" FIP STRAIGHT
H - 3/8" FIP x 3/8" FIP STRAIGHT
I - 3/8" MIP x 1/2" MIP STRAIGHT
J - 1/2" MIP x 1/2" MIP STRAIGHT
K - 1/2" FIP x 3/8" MIP STRAIGHT
VI - 1/2" MIP x 1/2" FIP STRAIGHT VALVE
VIM - 3/8" MIP x 1/2" FIP STRAIGHT VALVE
VIF - 1/2" FIP x 1/2" FIP STRAIGHT VALVE
VID - 3/8" FIP x 1/2" FIP STRAIGHT VALVE
V2 - 1/2" MIP x 1/2" FIP ANGLE VALVE
V2D - 3/8" MIP x 1/2" FIP ANGLE VALVE
V2F - 3/8" FIP x 1/2" FIP ANGLE VALVE

NOTE:
1/2" MIP TAPPED 3/8" FIP
3/8" MIP TAPPED 1/4" FIP

DS(C)12 1/2"OD (3/8"ID)

B - 1/2" FIP x 1/2" FIP STRAIGHT
C - 1/2" FIP x 1/2" MIP STRAIGHT
D - 1/2" MIP x 1/2" MIP STRAIGHT
E - 1/2" FIP x 3/8" MIP STRAIGHT
F - 1/2" FIP x 3/8" FIP STRAIGHT
G - 1/2" MIP x 3/8" FIP STRAIGHT
H - 3/8" FIP x 3/8" FIP STRAIGHT
I - 3/8" MIP x 3/8" MIP STRAIGHT
J - 1/2" MIP x 3/8" MIP STRAIGHT
K - 3/8" FIP x 3/8" MIP STRAIGHT
L - 3/4" FIP x 3/4" MIP STRAIGHT
M - 1/2" FIP x 3/4" MIP STRAIGHT
VI - 1/2" MIP x 1/2" FIP STRAIGHT VALVE
VIF - 1/2" FIP x 1/2" FIP STRAIGHT VALVE
VIL - 3/8" FIP x 1/2" FIP STRAIGHT VALVE
VIE - 3/8" MIP x 1/2" FIP STRAIGHT VALVE
V2 - 1/2" MIP x 1/2" FIP ANGLE VALVE

NOTE:
3/4" MIP TAPPED 1/2" FIP
1/2" MIP TAPPED 3/8" FIP
3/8" MIP TAPPED 1/4" FIP

DS(C)58 5/8"OD (1/2"ID)

A - 3/4" FIP x 3/4" FIP ELBOW
B - 3/4" FIP x 3/4" FIP STRAIGHT
C - 3/4" FIP x 3/4" MIP STRAIGHT
D - 3/4" MIP x 3/4" MIP STRAIGHT
E - 3/4" FIP x 1/2" MIP STRAIGHT
F - 1/2" FIP x 1/2" FIP STRAIGHT
G - 3/4" MIP x 1/2" FIP STRAIGHT
H - 1/2" MIP x 1/2" FIP STRAIGHT
I - 1/2" MIP x 1/2" MIP STRAIGHT
J - 1/2" MIP x 3/4" MIP STRAIGHT
K - 1/2" MIP x 3/4" FIP ELBOW
L - 1/2" FIP x 3/4" FIP STRAIGHT
R - 3/4" MIP x 3/4" FIP ELBOW
VI - 3/4" FIP x 3/4" FIP STRAIGHT VALVE
VIF - 1/2" FIP x 3/4" FIP STRAIGHT VALVE
VIL - 1/2" MIP x 3/4" FIP STRAIGHT VALVE
VIM - 3/4" MIP x 3/4" FIP STRAIGHT VALVE
V2 - 3/4" FIP x 3/4" FIP ANGLE VALVE
V2D - 3/4" MIP x 3/4" FIP ANGLE VALVE
V2M - 1/2" MIP x 3/4" FIP ANGLE VALVE
R5 - 1/2" MIP x 1/2" FIP STRAIGHT VALVE
RR5 - 1/2" MIP x 1/2" MIP STRAIGHT VALVE
RM5 - 3/4" MIP x 1/2" FIP STRAIGHT VALVE

NOTE:
3/4" MIP TAPPED 1/2" FIP
1/2" MIP TAPPED 3/8" FIP

DS(C)88 1"OD (3/4"ID)

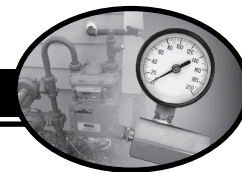
B - 3/4" FIP x 3/4" FIP STRAIGHT
C - 3/4" FIP x 3/4" MIP STRAIGHT
D - 3/4" MIP x 3/4" MIP STRAIGHT
R - 1" FIP x 1" FIP STRAIGHT
S - 1" FIP x 1" MIP STRAIGHT
T - 1" MIP x 1" MIP STRAIGHT
VI - 3/4" FIP x 3/4" FIP STRAIGHT VALVE

NOTE:
3/4" MIP TAPPED 1/2" FIP
1" MIP TAPPED 3/4" FIP



Don't See Your Size?

Other DuraTrac® combinations are available upon request. If you do not see what you need or have other questions, please call **DuraTrac® Customer Service** toll free at **1-866-678-8214** for further assistance.



**DS(C) Series
Gas Connectors**

Gas Connector BTU Ratings

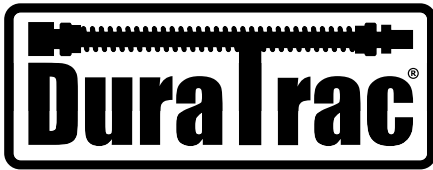
Size	12"	18"	24"	30"	36"	48"	60"	72"
1 1/4"OD (1"ID)	698,000	637,000	581,800	545,200	515,900	442,700	398,900	347,800
1"OD (3/4"ID)	345,000	310,000	290,900	270,500	255,900	215,000	197,400	173,900
5/8"OD (1/2"ID)	180,000	164,200	150,000	136,000	125,000	106,000	93,200	86,000
1/2"OD (3/8"ID)	102,000	93,100	85,000	77,100	71,100	60,500	53,200	49,100
3/8"OD (1/4"ID)	48,000	43,600	40,000	36,400	33,400	28,300	24,900	23,100

All figures shown are approximate.

Adapter Fittings

Cross Reference Numbers

Description	DuraTrac	Brasscraft	Dormont	USD	Crown
3/8" Flare x 3/8" FIP	D46S-66	AUI-6S	90-1022	U3-6C-S	GFS33F
3/8" Flare x 1/2" FIP	D46S-68	AUI-6-8S	90-1032	U3-6D-S	GFS34F
1/2" Flare x 1/2" FIP	D46S-88	AUI-8S	90-2032	US-8D-S	GFS44F
1/2" Flare x 3/4" FIP	D46S-812	AUI-8-12S	90-2042	US-8E-S	n/a
15/16" Flare x 1/2" FIP	D46S-158	MAUI-10-8S	90-3032	U3-10D-S	GFS54F
15/16" Flare x 3/4" FIP	D46S-1512	MAUI-10-12S	90-3042	U3-10E-S	GFS56F
3/8" Flare x 3/8" MIP	D48S-66	AU2-6S	90-1021	U1-6C-S	GFS33M
3/8" Flare x 1/2" MIP	D48S-68	AU2-6-8S	90-1031	U1-6D-S	GFS34M
1/2" Flare x 3/8" MIP	D48S-86	AU2-8-6S	90-2021	U1-8C-S	n/a
1/2" Flare x 1/2" MIP	D48S-88	AU2-8S	90-2031	U1-8D-S	GFS44M
1/2" Flare x 3/4" MIP	D48S-812	AU2-8-12S	90-2041	U1-8C-S	n/a
15/16" Flare x 1/2" MIP	D48S-158	MAU2-10-8S	90-3031	U1-10D-S	GFS54M
15/16" Flare x 3/4" MIP	D48S-1512	MAU2-10-12S	90-3041	U1-10E-S	GFS56M
15/16" Flare x 3/4" MIP ELBOW	D50S-1512	MAE1-10-12	95-3042	n/a	n/a
3/8" Flare x 1/2" FIP STRAIGHT VALVE	D89B-68	TBV6-8	91-1032	01-387	GV064F
1/2" Flare x 1/2" FIP STRAIGHT VALVE	D89B-88	TBV8-8	91-2032	01-487	GV084F
15/16" Flare x 1/2" FIP STRAIGHT VALVE	D89B-158	TBV10-8	91-3032	01-587	GV154F
15/16" Flare x 3/4" FIP STRAIGHT VALVE	D89B-1512	TBV10-12	91-3042	01-687	GV156F
1/2" FIP x 1/2" FIP STRAIGHT VALVE	D89F-8	TBV8-8	92-3232	01-2808	GV4F4F
3/8" FIP x 3/8" FIP STRAIGHT VALVE	D89F-6	TBV6	92-4242	01-2806	GV6F6F
3/4" FIP x 3/4" FIP STRAIGHT VALVE	D89F-12	TBV12	92-2222	01-2812	n/a
1" FIP x 1" FIP STRAIGHT VALVE	D89F-16	TBV16	n/a	n/a	n/a
15/16" Flare x 3/4" FIP ANGLE VALVE	D90N-1512	TBVA10-12	n/a	n/a	n/a
1/2" Flare x 1/2" FIP ANGLE VALVE	D90N-88	TBVA8-8	n/a	n/a	n/a
3/8" Flare x 1/2" FIP ANGLE VALVE	D90N-68	TBVA6-8	n/a	n/a	n/a
1" Flare x 1" FIP	D46S-1616	n/a	n/a	n/a	n/a
1" Flare x 3/4" FIP	D46S-1612	n/a	90-4042	n/a	n/a
1" Flare x 1" MIP	D48S-1616	n/a	n/a	n/a	n/a
1" Flare x 3/4" MIP	D48S-1612	n/a	90-4041	n/a	n/a



Cross Reference



Gas Connector Cross Reference

Hundreds of part combinations are available from **DuraTrac**. The most popular choices are shown below for your convenience. To request a combination or for other inquiries, please call **DuraTrac** Customer Service toll free at 1-866-678-8214 for further assistance.



Description	".." = Tube Length				
	DuraTrac	Brasscraft	Dormont	USD	Crown
3/8"OD (1/4"ID)					
1/2" MIP x 1/2" MIP	DSC38--J	CSSL44--	10C-3131--	103-3131--	CG3--A
1/2" FIP x 1/2" FIP	DSC38--B	CSSL55--	10C-3232--	103-3232--	CG3--C
3/8" FIP x 3/8" FIP	DSC38--H	CSSL88--	10C-2222--	103-2222--	N/A
1/2" FIP x 1/2" MIP	DSC38--C	CSSL54--	10C-3132--	103-3132--	CG3--B
3/8" FIP x 1/2" MIP	DSC38--G	CSSL48--	10C-3122--	103-3122--	N/A
3/8" FIP x 3/8" MIP	DSC38--E	CSSL87--	10C-2122--	103-2122--	N/A
3/8" MIP x 1/2" FIP STRAIGHT VALVE	DSC38--VIM	CSSL7M--	10C-2135--	103-2135--	N/A
1/2" MIP x 1/2" FIP STRAIGHT VALVE	DSC38--VI	CSSL4M--	10C-3135--	130-3135--	CG3--VI
1/2" FIP x 1/2" FIP STRAIGHT VALVE	DSC38--VIF	CSSL5M--	10C-3235--	103-3235--	CG3--V2
3/8" FIP x 1/2" FIP STRAIGHT VALVE	DSC38--VID	CSSL8M--	10C-2235--	103-2235--	N/A

Description	".." = Tube Length				
	DuraTrac	Brasscraft	Dormont	USD	Crown
1/2"OD (3/8"ID)					
1/2" MIP x 1/2" MIP	DSC12--D	CSSD44--	20C-3131--	203-3131--	CG4--A
1/2" MIP x 3/8" MIP	DSC12--J	CSSD47--	20C-2131--	203-2131--	N/A
3/8" MIP x 3/8" MIP	DSC12--I	CSSD77--	20C-2121--	203-2121--	N/A
1/2" FIP x 1/2" FIP	DSC12--B	CSSD55--	20C-3232--	203-3232--	CG4--F
1/2" FIP x 3/8" FIP	DSC12--F	CSSD58--	20C-2232--	203-2232--	N/A
1/2" FIP x 1/2" MIP	DSC12--C	CSSD54--	20C-3132--	203-3132--	CG4--B
1/2" FIP x 3/8" MIP	DSC12--E	CSSD57--	20C-2132--	203-2132--	N/A
3/8" FIP x 1/2" MIP	DSC12--G	CSSD48--	20C-3122--	203-3122--	CG4--J
1/2" MIP x 1/2" FIP STRAIGHT VALVE	DSC12--VI	CSSD4K--	20C-3135--	203-3135--	CG4--VI
1/2" FIP x 1/2" FIP STRAIGHT VALVE	DSC12--VIF	CSSD5K--	20C-3235--	203-3235--	CG4--V2

Description	".." = Tube Length				
	DuraTrac	Brasscraft	Dormont	USD	Crown
5/8"OD (1/2"ID)					
3/4" MIP x 3/4" MIP	DSC58--D	CSSC11--	30C-4141--	303-4141--	N/A
3/4" MIP x 1/2" MIP	DSC58--J	CSSC14--	30C-3141--	303-3141--	CG5--C
1/2" MIP x 1/2" MIP	DSC58--I	CSSC44--	30C-3131--	303-3131--	CG5--A
3/4" FIP x 3/4" FIP	DSC58--B	CSSC22--	30C-4242--	303-4242--	CG5--I
3/4" FIP x 1/2" FIP	DSC58--L	CSSC25--	30C-3242--	303-3242--	N/A
1/2" FIP x 1/2" FIP	DSC58--F	CSSC55--	30C-3232--	303-3232--	CG5--5
3/4" FIP x 3/4" FIP ELBOW	DSC58--A	CSSC23--	30C-4144--	303-4144--	N/A
1/2" FIP x 3/4" MIP	DSC58--G	CSSC15--	30C-4132--	303-4132--	N/A
3/4" FIP x 3/4" MIP	DSC58--C	CSSC21--	30C-4142--	303-4142--	CG5--D
3/4" FIP x 1/2" MIP	DSC58--E	CSSC24--	30C-3142--	303-3142--	CG5--E
1/2" FIP x 1/2" MIP	DSC58--H	CSSC54--	30C-3132--	303-3132--	CG5--B
3/4" FIP x 3/4" FIP STRAIGHT VALVE	DSC58--VI	CSSC2J--	30C-3245--	303-3245--	CG5-4V
3/4" MIP x 3/4" FIP STRAIGHT VALVE	DSC58--VIM	CSSC1J--	30C-4145--	303-4145--	CG5--V3
1/2" MIP x 3/4" FIP STRAIGHT VALVE	DSC58--VIL	CSSC4J--	30C-3145--	303-3145--	CG5--V7
1/2" MIP x 1/2" FIP STRAIGHT VALVE	DSC58--R5	CSSC4K--	30C-3135--	303-3135--	CG5--V1
3/4" FIP x 3/4" FIP ANGLE VALVE	DSC58--V2	CSSC2P--	30C-4245--	303-4245--	CG5--V6
3/4" MIP x 3/4" FIP ANGLE VALVE	DSC58--V2D	CSSC1P--	30C-4146--	303-4146--	CG5--V5
1/2" MIP x 3/4" FIP ANGLE VALVE	DSC58--V2M	CSSC4P--	30C-3146--	303-3146--	N/A

Description	".." = Tube Length				
	DuraTrac	Brasscraft	Dormont	USD	Crown
1"OD (3/4"ID)					
3/4" MIP x 3/4" FIP	DSC88--C	CSSB21--	40C-4142--	403-4142--	CG8--D
3/4" FIP x 3/4" FIP	DSC88--B	CSSB22--	N/A	403-4242--	CG8--F
3/4" MIP x 3/4" MIP	DSC88--D	CSSB11--	N/A	403-4141--	N/A
3/4" FIP x 3/4" FIP STRAIGHT VALVE	DSC88--VI	N/A	N/A	N/A	N/A

PART LEGEND

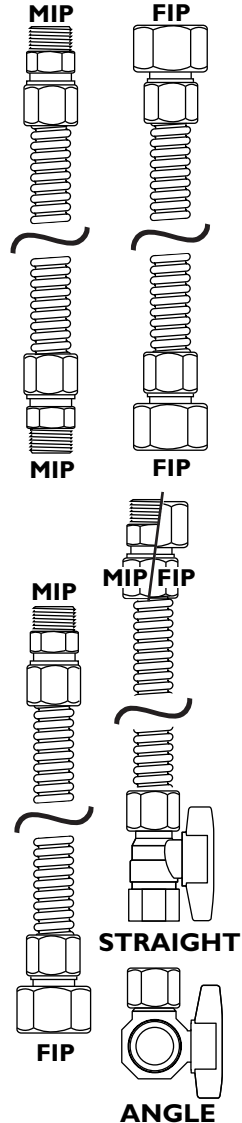
DuraTrac
Coated = DSC
Uncoated = DS

Brasscraft
Uncoated = Not Available

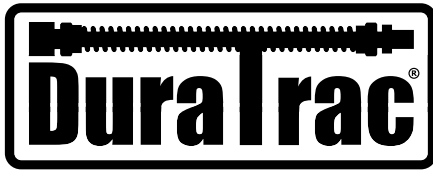
Dormont
Coated = 30C, 20C, 10C
Uncoated = 30, 20, 10

USD
Coated = 303, 203, 103
Uncoated = 300, 200, 100

Crown
Coated = CG3
Uncoated = G3



"Preferred By Professionals."



Water Flex Connectors



Flexible & Kink Free Stainless Steel Water Heater/Water Softener Connectors

Intended for residential and commercial water connections, DuraTrac's Flexible Stainless Steel Water Flex is made to safely connect a variety of components. DuraTrac® engineered our Flexible Stainless Steel Water Flex for optimal performance with water heaters and water softeners.

Product Features

- 100% Factory Leak Tested
- Strong and Extremely Flexible
- Will Not Corrode, Discolor or Rust
- Corrugated 304 Stainless Steel



SPIRAL TYPE CORRUGATIONS

Full Length (into nuts) **WITH** Di-Electric Sleeve

Description	Part
15" Long x 3/4" FIP Nut x 3/4" FIP Nut	DSW7815B
18" Long x 3/4" FIP x 3/4" FIP	DSW7818B
24" Long x 3/4" FIP x 3/4" FIP	DSW7824B
15" Long x 3/4" FIP Nut x 3/4" ID/OD Sweat	DSW7815A
18" Long x 3/4" FIP x 3/4" ID/OD Sweat	DSW7818A
24" Long x 3/4" FIP x 3/4" ID/OD Sweat	DSW7824A



HYDRAULIC CORRUGATIONS

WITHOUT Di-Electric Sleeve

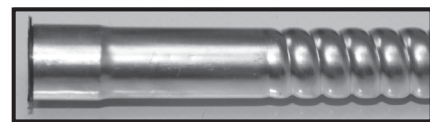
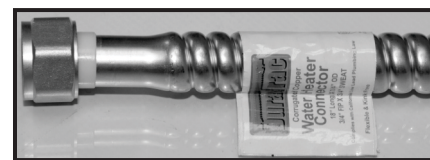
Description	Part
18" Long x 1" FIP Nut x 3/4" FIP Nut	DSW9818B
24" Long x 1" FIP x 3/4" FIP	DSW9824B
18" Long x 1" FIP x 1" FIP	DSW8818B
24" Long x 1" FIP x 1" FIP	DSW8824B



Corrugated Copper Water Heater Connectors

Made from 100% Copper, with Di-Electric Sleeve to protect against electrolysis.

Description	Part
15" Long x 3/4" FIP x 3/4" FIP	DCW7815B
18" Long x 3/4" FIP x 3/4" FIP	DCW7818B
24" Long x 3/4" FIP x 3/4" FIP	DCW7824B
15" Long x 3/4" FIP x 3/4" ID/OD Sweat	DCW7815A
18" Long x 3/4" FIP x 3/4" ID/OD Sweat	DCW7818A
24" Long x 3/4" FIP x 3/4" ID/OD Sweat	DCW7824A

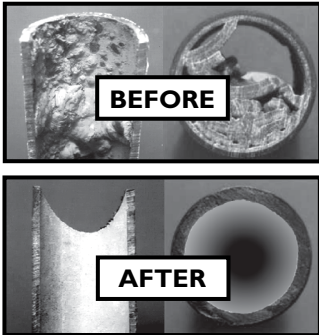




Scale Prevention Systems

“Defend” Against Scale and Corrosion

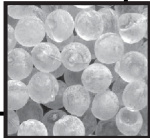
ScaleDefender Systems are a point-of-use system optimized for tankless or standard water heaters. Proudly manufactured in the **USA**, ScaleDefender can also be used for **any** application where scale control is needed. With a portable footprint, the system easily installs on the cold water line before the heater and allow for quick maintenance. The ScaleDefender System is precision engineered to protect the heat exchanger and other parts against corrosion from lime scale (minerals) using **German** scale control technology.



BEFORE

AFTER

Custom Made Pleated Filter
With *German Siliphos® AntiScalant Media*
5 Micron, polyester, pleated sediment filter combined with commercial grade **German Siliphos®** scale inhibitor loaded in the center for optimum holding capacity. Tested and proven to increase particle removal, lower initial pressure drop and deliver higher flow rates.



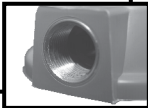
Pressure Gauge
Rated at 150 psi
Each system comes equipped with pressure gauge

UV Protected Housings
Heavy-Duty Blue Plastic
2-1/2" x 20" system with 3/4" ports (8-10 gpm)

Also Inside The Box
Housing Wrench
Mounting Bracket
All necessary brackets, hardware, instructions, and tools included.



AB1953 Standard Cap
With Sealed Solid Brass Inserts
Port and gauge threads feature fully threaded **lead-free solid brass inserts** for improved durability. This added strength prevents leaking, cracking and mis-threading.



Duratrac's ScaleDefender Systems are covered with a limited **5 Year Warranty** on housings and **1 Year Warranty** on gauges.

****Replacement filters are available**

Custom Configurations Available

Custom and whole house sizes also available. ScaleDefender System are an economical alternative to higher-priced systems for ice machines and other applications.

For example, the Two Stage System shown here offers extra protection for applications where scale control is needed for clean drinking water.



Two Stage System Options
2-1/2" x 20" system with 3/4" ports (8-10 gpm). Can be reduced for 1/2" or 3/8" connections.

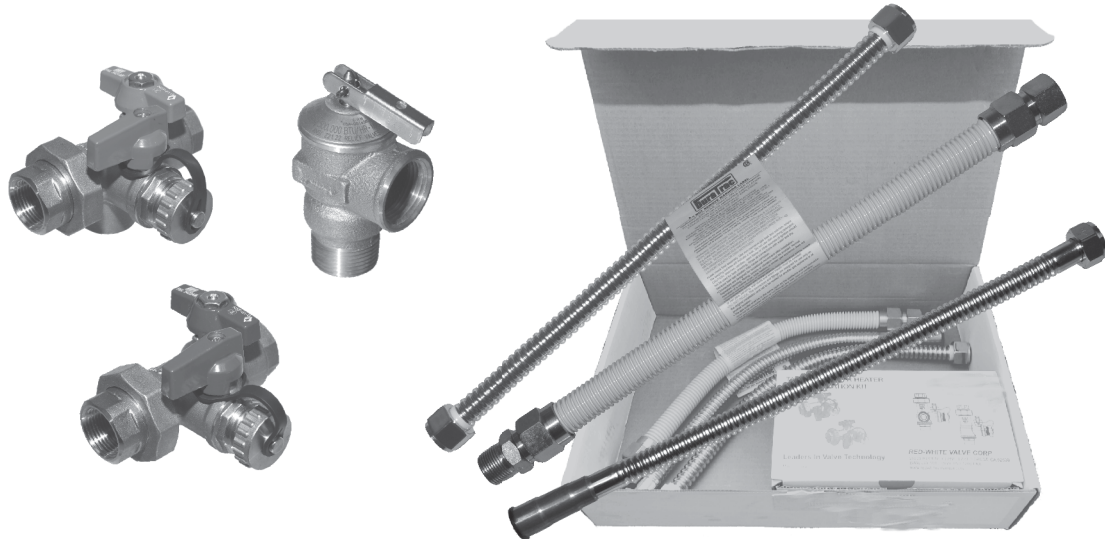
STAGE ONE
5 micron polyester pleated sediment filter with the tested and proven **German Siliphos®** scale inhibitor; down the center allows for higher loading capacity, increased particle removal, lower initial pressure drop and higher flow rates, scale reduction.

STAGE TWO
Filter with **KDF85** and coconut shell catalytic carbon reduce chlorine, chloramines, heavy metals (lead, mercury, iron), VOCs (volatile organic compounds), other chemicals, and hydrogen sulfide. Also inhibits bacterial growth.

“Preferred By Professionals.”



Tankless Water Heater Kits



Tankless Water Heater Kit Details

Within **DuraTrac® Tankless Water Heater Kits** are the highest quality components conveniently packaged at a value-added price. **DuraTrac®** offers the best assortment in one convenient package. We've taken every measure to insure a safe, reliable system install when using the **DuraTrac® Tankless Water Heater Kits**. All kit components are fully protected by a **3 Year Limited Warranty** against all manufacturer defects.



Kit Components

- **DuraTrac® DSC Poly-Coated Gas Flex**
High Flow 1" x 18" or 24" (3/4"ID) FIP
- **DuraTrac® Stainless Steel Water Flex**
2 ea. or 1 ea. FIP 3/4" x 18" or 24" - FIP Nut x Nut
- **Copper Sweat Water Flex (optional)**
3/4" ID x 18" or 24" Corrugated Stainless Steel
- **Single Union Service Valve Cold**
- **Single Union Service Valve Hot**
- **Certified Pressure Relief Valve**
3/4" Automatic Reseating

Kit Selection

DSCTKW-18S

- Single Union Service Valve Set
- 1 ea. - 18" High Flow BTU Gas Connector
 - 2 ea. - 18" 3/4" x Copper Sweat SS Water Flex
 - 1 ea. - Relief Valve

DSCTKW-24S

- Single Union Service Valve Set
- 1 ea. - 24" High Flow BTU Gas Connector
 - 2 ea. - 24" 3/4" x Copper Sweat SS Water Flex
 - 1 ea. - Relief Valve

DSCTKW-18N

- Single Union Service Valve Set
- 1 ea. - 18" High Flow BTU Gas Connector
 - 2 ea. - 18" FIP x 3/4" FIP Nut x Nut SS Water Flex
 - 1 ea. - Relief Valve

DSCTKW-24N

- Single Union Service Valve Set
- 1 ea. - 24" High Flow BTU Gas Connector
 - 2 ea. - 24" FIP x 3/4" FIP Nut x Nut SS Water Flex
 - 1 ea. - Relief Valve

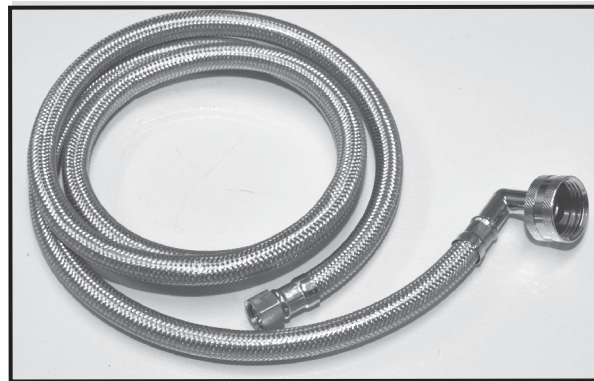
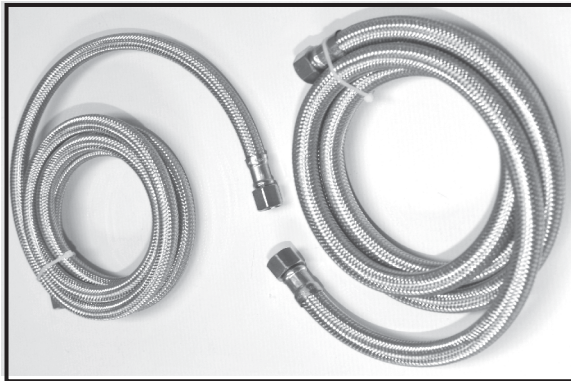


Braided SS Dishwasher/Icemaker Connectors

Introducing the **NEWEST** product in our DuraTrac lineup...

Braided Lead Free Stainless Steel Water Connectors!

Featuring superior construction for long product life. We build these lines to last!



Description		60"	72"	96"
ICE MAKER CONNECTOR	1/4" COMP X 1/4" COMP	DSIM1460	DSIM1472	DSIM1496
DISHWASHER CONNECTOR	3/8" COMP X 3/8" COMP	DSDW3860	DSDW3872	DSDW3896
WHIRLPOOL STYLE DISHWASHER CONNECTOR	3/8" COMP X 3/4" FEMALE HOSE THREAD ELBOW	DSDW3860EL	DSDW3872EL	DSDW3896EL

We start with a virgin P.V.C. extruded inner core, and then braid a tight nylon jacket over it. Next, we extrude clear P.V.C. over the top of the braid to keep the nylon braid intact. We then weave a tight cover of 304 stainless steel wire over the top of the clear P.V.C. At this stage in the process we assemble the lead-free brass barbed inserts, the ferrules and the compression nuts to the tube depending on the finished length desired. Finally, we visually inspect and pressure test each item.

Other manufacturers use a much cheaper, soft EPDM inner core, which is prone to kinking, collapsing, and eventual inner tube erosion from ozone and other contaminants.

Using Stainless Steel Braided Ice Maker and Dishwasher Connectors protects against water line kinking, flattening, pinching, and even an occasional rodent looking for water.

No matter how well water lines are made, nothing lasts forever. Water lines **MUST** be inspected every 6 months for signs of wear or leakage, and should be replaced every seven years.

Contact DuraTrac®

DuraTrac's vast distribution network is here to support all dealer and wholesaler requirements. With factory representatives worldwide, there is a DuraTrac® Product Specialist ready to service your needs near you.

To reach your DuraTrac® Sales Representative, visit us online at www.duratracinc.com or email us at info@duratracinc.com.

Corporate Office

465 N. Berry St.
Brea, CA 92821
Tel. 714.674.0448
Fax 714.674.0180

